

# COLORADO TRAIL @ KENOSHA PASS



## DAY HIKE

**FYI:** The map on the reverse side is not intended for navigation, but rather for general orientation.  
**P.S.** We welcome trip reports and photos at [oriccolorado@yahoo.com](mailto:oriccolorado@yahoo.com)

**Location:** Pike National Forest  
 Access from Kenosha Pass

**Contact Info:** South Park Ranger District  
 719-836-2031  
[www.fs.fed.us/r2](http://www.fs.fed.us/r2)

**Length:** 4.06 miles one-way (estimate using the Nat'l Geo Mapping Software)

**Time:** The average person hikes apx. 2 miles an hour. Adjust your time +/- based on terrain and weather conditions and your skill and fitness level and whether you are hiking or trail running.

**Elevation Gain/Loss:** +835' -779' = -56'

**Difficulty:** Easy

**Trail Users:** Hikers, cyclists, equestrians and wildlife

**Season:** June through mid October

**Dogs:** On hand-held leash

**Permits:** None required

**Getting There From Denver:** Take US Highway 285 for about 58 miles SE of the Denver Area. The Kenosha Pass Campground is on the right. The Colorado Trail is visible from the highway just past the campground entrance. Park alongside the highway, not at the campground.

**Maps:** National Geographic Trails Illustrated # 105W. Stay found with the aid of a topographic map, a compass, a GPS receiver and the skill to use them.

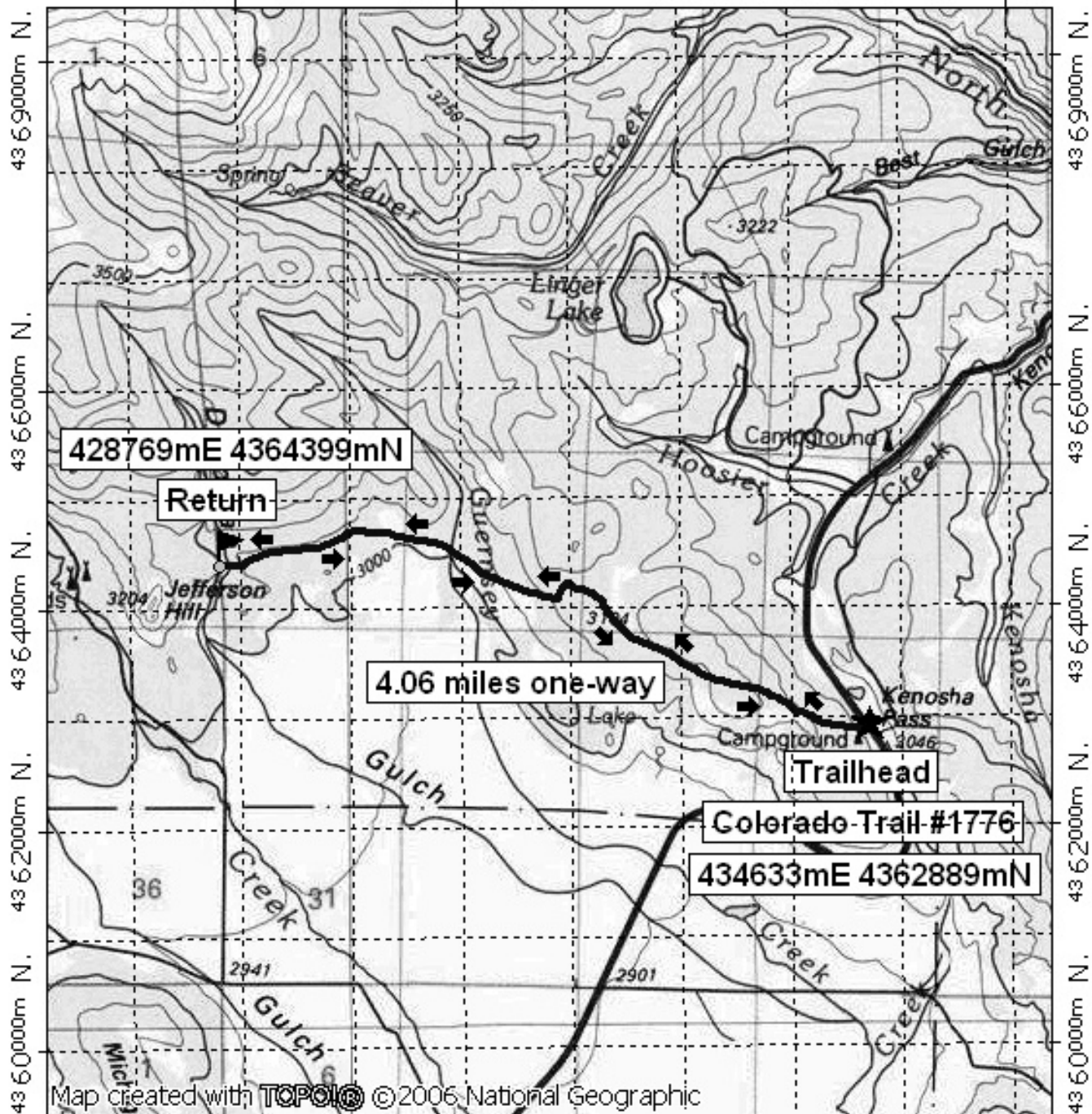
**Safety Considerations and Supplemental Info:** ■ Potential for altitude sickness ■ Afternoon thunderstorms accompanied by lightning ■ Check [www.oriconline.org](http://www.oriconline.org) for fire restrictions ■ Be prepared for mosquitoes from June through September

**Trail Description:** There is a register at the beginning of the trail. Pass under a power line after about ½ mile and onto a forested ridge. Continue until you cross a road and then cross Deadman Creek on a bridge.

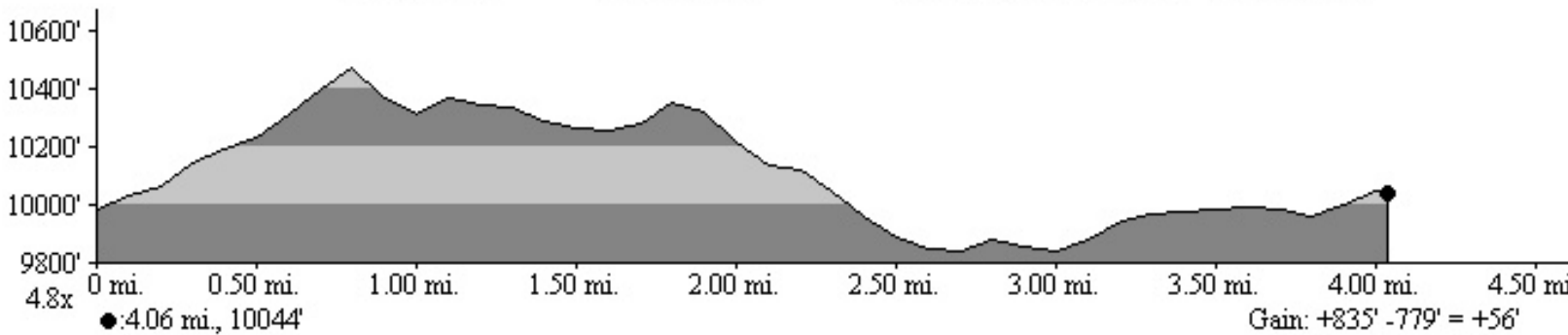
**Highlights:** ■ Beautiful views of South Park ■ Trail goes through several outstanding stands of Aspen ■ Good September hike

# Colorado Trail @ Kenosha Pass Day Hike

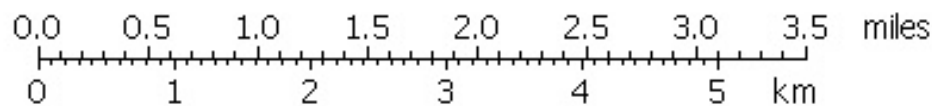
429 000m E. 431 000m E. WGS84 Zone 13S 436 000m E.



429 000m E. 431 000m E. WGS84 Zone 13S 436 000m E.



**NATIONAL  
GEOGRAPHIC**



TN MN  
9 1/2°  
05/01/08