



## GIBSON LAKE TRAIL

### DAY HIKE

**FYI:** The map on the reverse side is not intended for navigation, but rather for general orientation.

**P.S.** More trail maps available at [www.oriconline.org](http://www.oriconline.org)

**Location:** Pike National Forest  
In Park County  
Northwest of Webster

**Contact Info:** South Platte Ranger District  
303-275-5350  
[www.fs.fed.us/r2](http://www.fs.fed.us/r2)

**Length:** 2.29 miles one-way (estimate using the Nat'l Geo Mapping Software)

**Time:** The average person hikes apx. 2 miles an hour. Adjust your time +/- based on terrain and weather conditions and your skill and fitness level and whether you are hiking or trail running.

**Difficulty:** Moderate

**Trail Users:** Hikers

**Season:** Mid to late June through early October

**Elevation Gain/Loss:** +1585' -51' = +1534'

**Dogs:** On hand-held leash

**Permits:** None required

**Getting There From Denver:** Take US Highway 285 west to Webster. At Webster turn right (north/northwest) on Park County Road 60. Continue on Park County Road 60 (Forest Road 120) to Hall Valley and Hand Cart Campgrounds. At this point, take Forest Road 126 (a 4-wheel drive road) to the Gibson Lake trailhead.

**Maps:** National Geographic Trails Illustrated #104W. **IMPORTANT:** Stay found with the aid of a topographic map, a compass, a GPS receiver and the skill to use them.

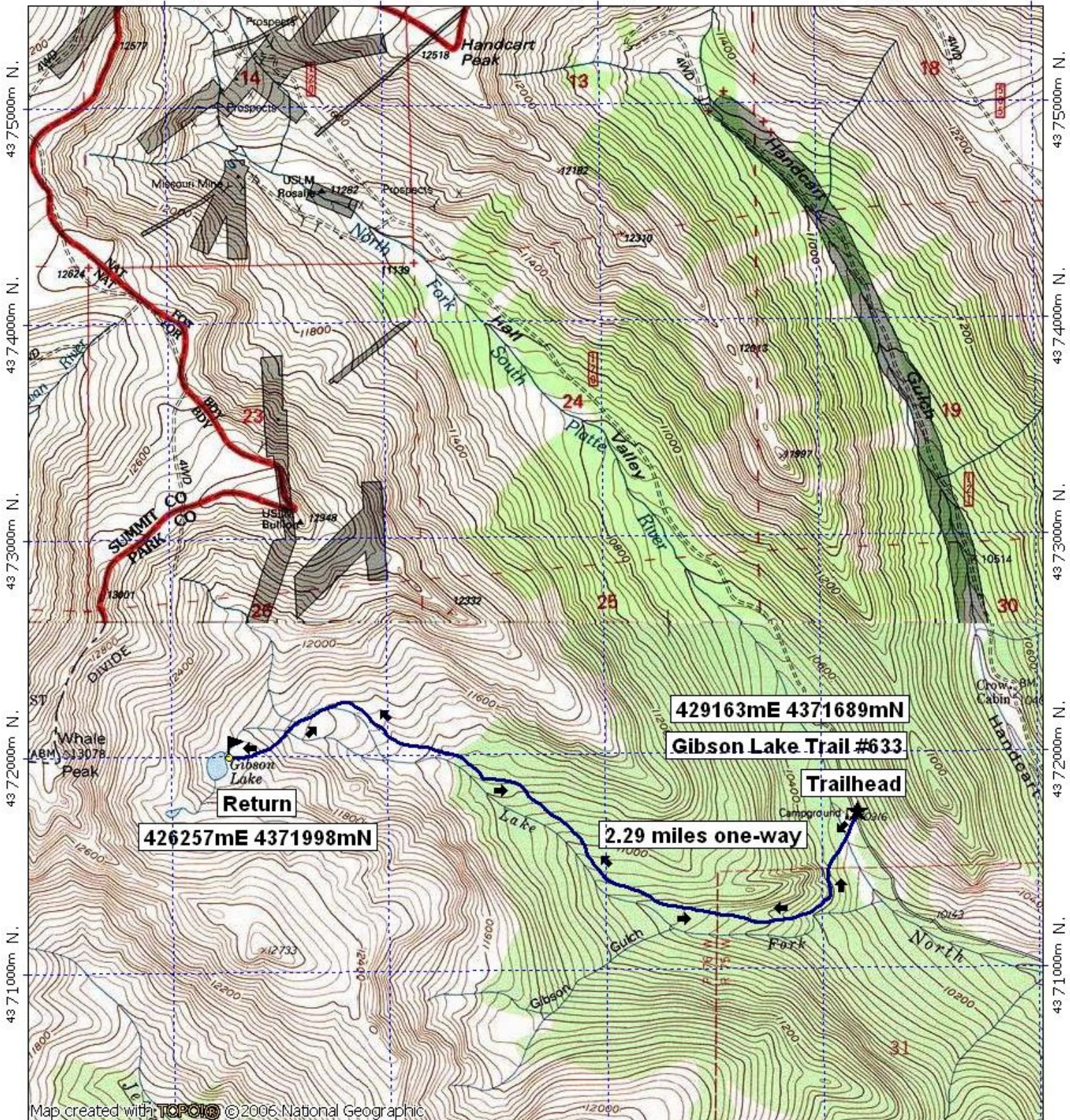
**Safety Concerns and Supplemental Info:** ■ We suggest leaving your hiking itinerary with someone who will be awaiting your return ■ Afternoon thunderstorms and lightning ■ Be prepared for mosquitoes from June through September

**Trail Description:** This is a maintained Forest Service Trail (FDT 633). **TIP:** Contact the South Platte Ranger District for trail updates and road conditions.

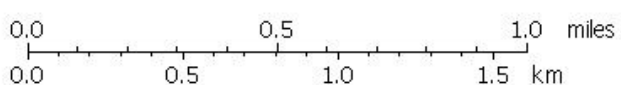
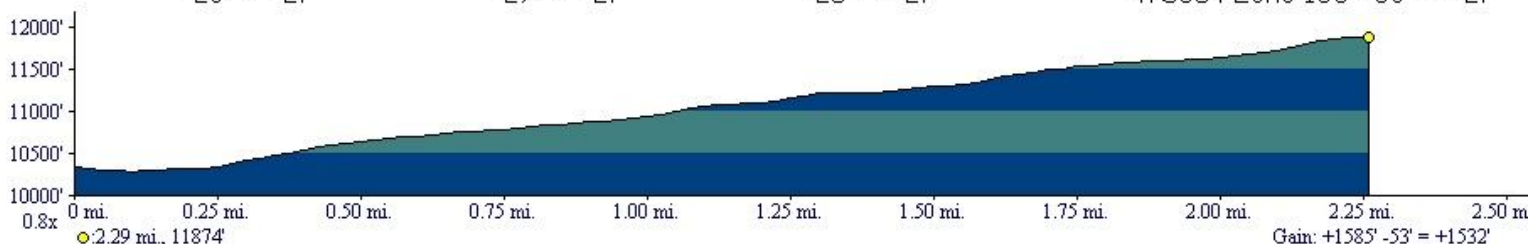
**Highlights:** ■ Reportedly good trout fishing ■ Seasonal wildflowers ■ Access to Whale Peak

# Gibson Lake Trail

426000m E, 427000m E, 428000m E, WGS84 Zone 13S 430000m E.



**429163mE 4371689mN**  
**Gibson Lake Trail #633**  
**Trailhead**  
**2.29 miles one-way**  
**Return**  
**426257mE 4371998mN**



TN MN  
9 1/2°  
06/04/08