



GRIFFIN MONUMENT

DAY HIKE

FYI: The map on the reverse side is not intended for navigation, but rather for general orientation.

P.S. More trail maps available at www.oriconline.org

Location: Arapaho National Forest
Near Silver Plume, CO

Contact Info: Clear Creek Ranger District
303-567-3000
www.fs.fed.us/r2

Length: 1.81 miles one-way (estimate using the Nat'l Geo Mapping Software)

Time: The average person hikes apx. 2 miles an hour. Adjust your time +/- based on terrain and weather conditions and your skill and fitness level and whether you are hiking or trail running.

Elevation Gain/Loss: +1,279' -25' = +1254'

Difficulty: Easy to moderate on mining roads with few obstacles

Trail Users: Hikers and Cyclists

Season: Mid June through end of October

Dogs: Under owner's control

Permits: None required

Getting There From Denver: Take I-70 west. Get off I-70 at Exit 221 at Silver Plume. Park on the street in town, by the bakery, and away you go.

Maps: National Geographic Trails Illustrated #104E and or the Georgetown USGS 7.5 topographic map. **IMPORTANT:** Stay found with the aid of a topographic map, a compass, a GPS receiver and the skill to use them.

Safety Considerations and Supplemental Info: ■ Old mine shafts
■ Lightning from afternoon thunderstorms ■ Check www.oriconline.org for fire restrictions ■ Be prepared for mosquitoes from June through September

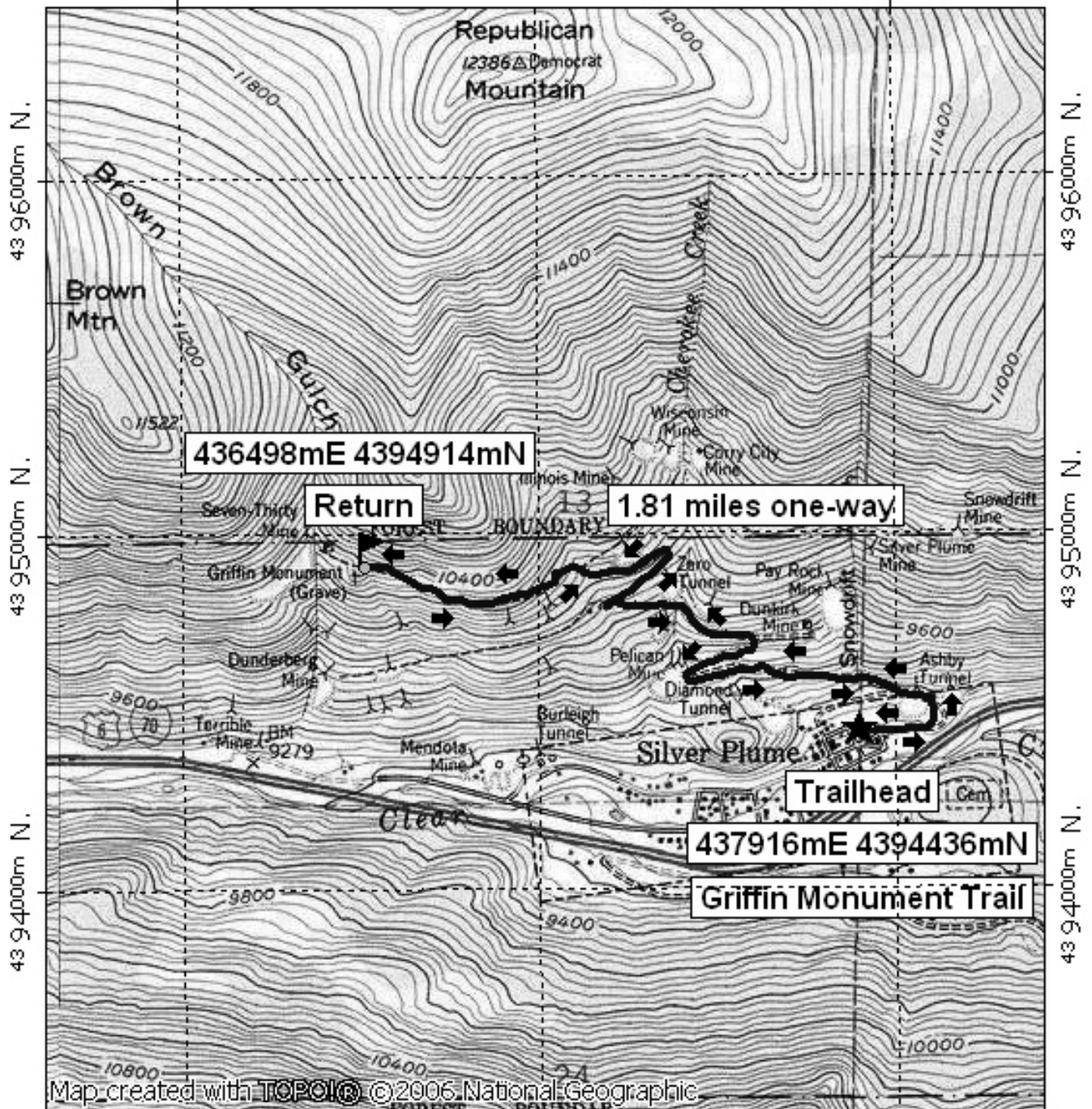
Trail Description: From Silverplume hike up the road, switchbacking and heading generally North and a little West to the road's end at Brown Gulch. The Griffin Monument is a few yards from the end of the road (by the 7:30 mine) down a short path to the left (south). **TIP:** Contact the Clear Creek Ranger District for trail updates.

Highlights: ■ Sample a part of Colorado's Mining History ■ In 1887 Clifford Griffin managed a mine nearby, and was despondent over lost love, fatally shooting himself. His father buried him and erected the monument.

Griffin Monument Day Hike

436000m E.

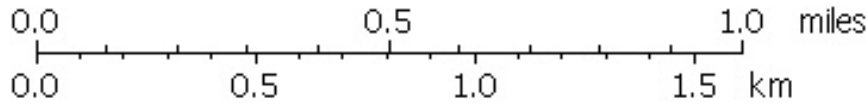
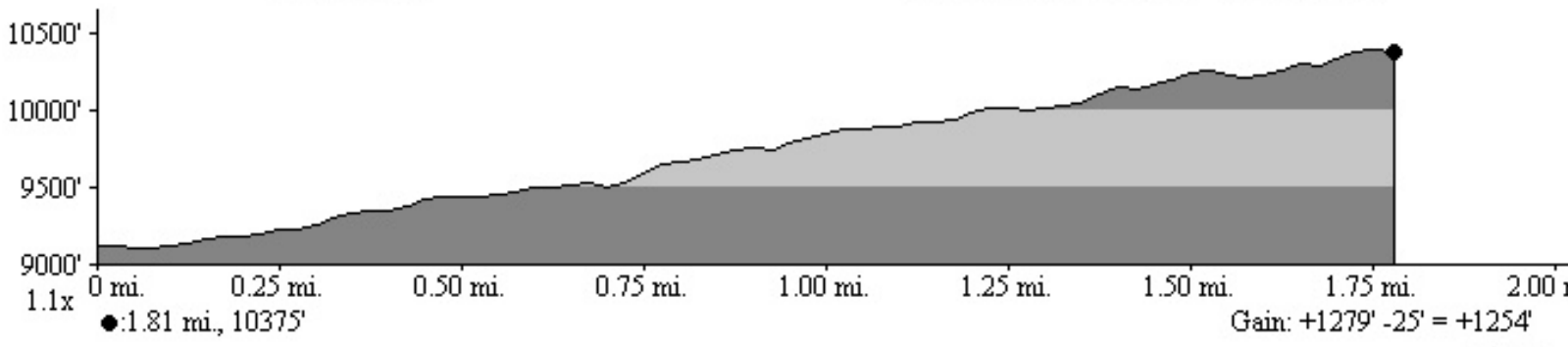
WGS84 Zone 13S 438000m E.



Map created with **TOPOLIC** ©2006 National Geographic

436000m E.

WGS84 Zone 13S 438000m E.



TN MN
9 1/2°
04/24/08