

# PAWNEE BUTTES



## DAY HIKE

**Early Season**

**Location:** Pawnee National Grasslands  
Apx 1 hour east of Ft. Collins

**Contact Info:** Pawnee Nat'l Grassland  
970-353-5004  
www.fs.fed.us/r2

**Length:** 1.68 miles one-way (estimate using the Nat'l Geo Mapping Software)

**Time:** The average person hikes apx. 2 miles an hour. Adjust your time +/- based on terrain, weather conditions and your skill and fitness level and whether you are hiking or trail running.

**Season:** Open year round (best enjoyed in the Spring and Fall)

**Elevation Gain/Loss:** +0' -260' -260'

**Difficulty:** Easy

**Trail Users:** Hikers and bird watchers

**Dogs:** On leash

**Permits:** None

**Getting There From Denver:** From I-25 take CO Highway 14 east apx 50 miles to County Road 103. Go north on CR103 following the directional signs through the ghost town of Keota north and east to the Pawnee Buttes.

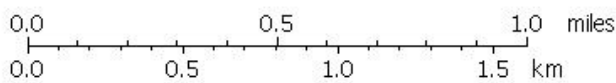
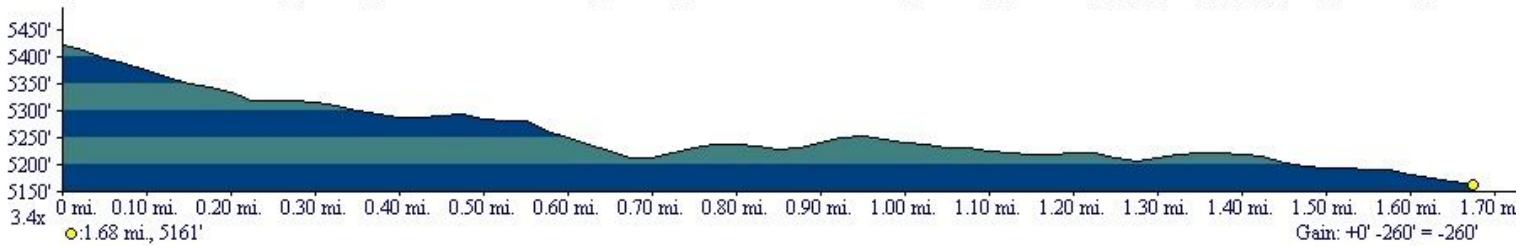
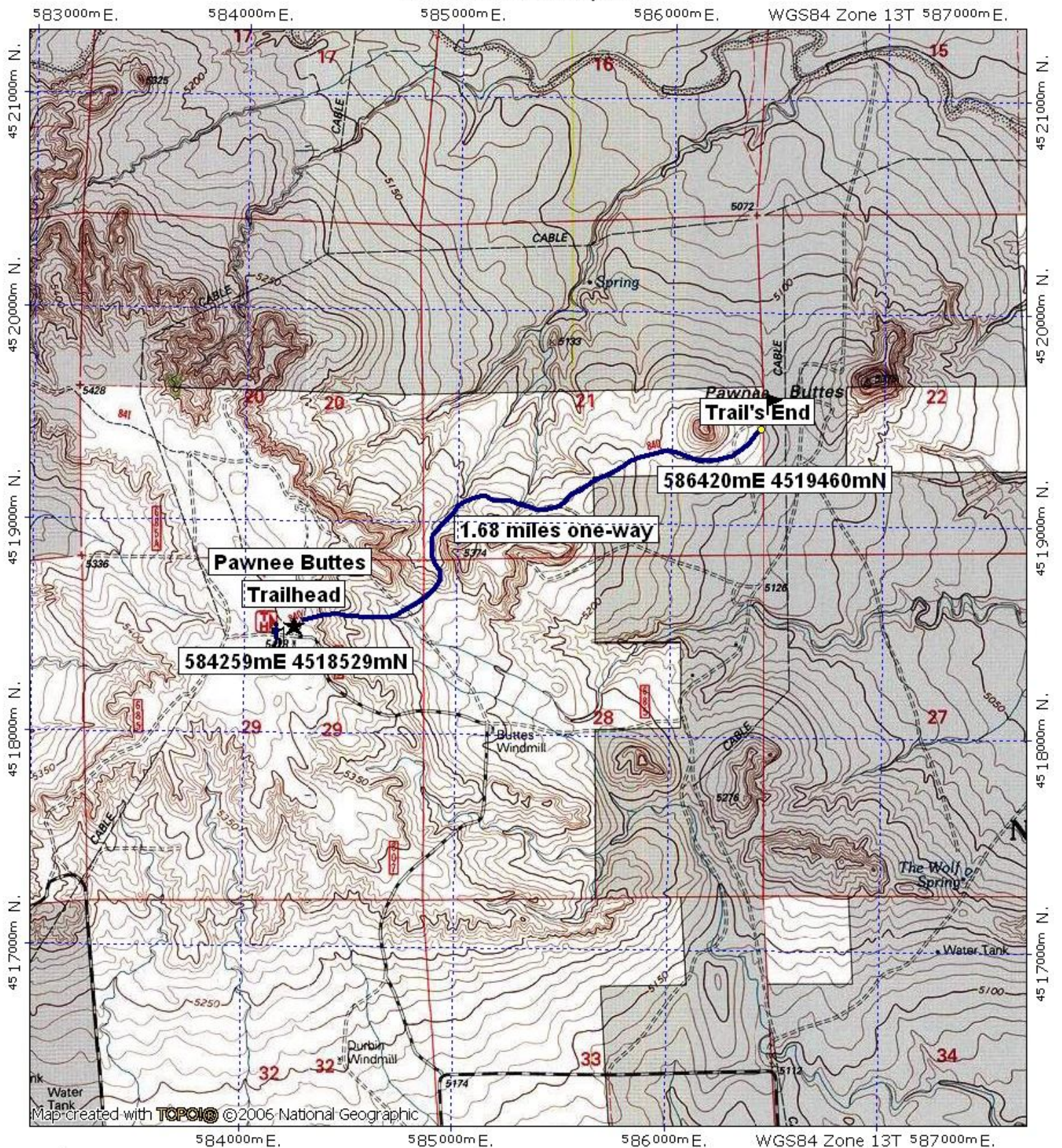
**Maps:** Pawnee National Grassland Map. **IMPORTANT HINT:** Consider carrying a compass and a GPS receiver with your topographic map to aid you in staying found.

**Safety Considerations and Supplemental Info:** ■ Afternoon thunderstorms and lightning ■ The Overlook, the Lips Bluff trail and 200 yards from the bottom of Lips Bluff are closed March 1 – June 30 to protect nesting hawks, eagles and falcons. The Pawnee Buttes trail, however, is open. ■ Be prepared for mosquitoes from June through September

**Trail Description:** This is a plains hike known for it's geologic formations and variety of bird species. The trail leads around the bottom of the buttes and gets light to moderate usage. The trail is leads you past West Butte, traveling along an arroyo and between two bluffs for much of the way. The trail ends just beyond West Butte at private property and East Butte lies just a little further east. **TIP:** Contact the Pawnee National Grasslands for trail updates.

**Highlights:** ■ The sandstone buttes which stand approximately 300 feet above the surrounding landscape. They are composed of crumbling sandstone and house a number of raptors and hundreds of bird species ■ Wildflowers that peak in late May to early June ■ The town of Keyota, a relic of the dust bowl years on the Colorado prairies

# Pawnee Buttes Day Hike



TN MN  
9°  
07/09/08