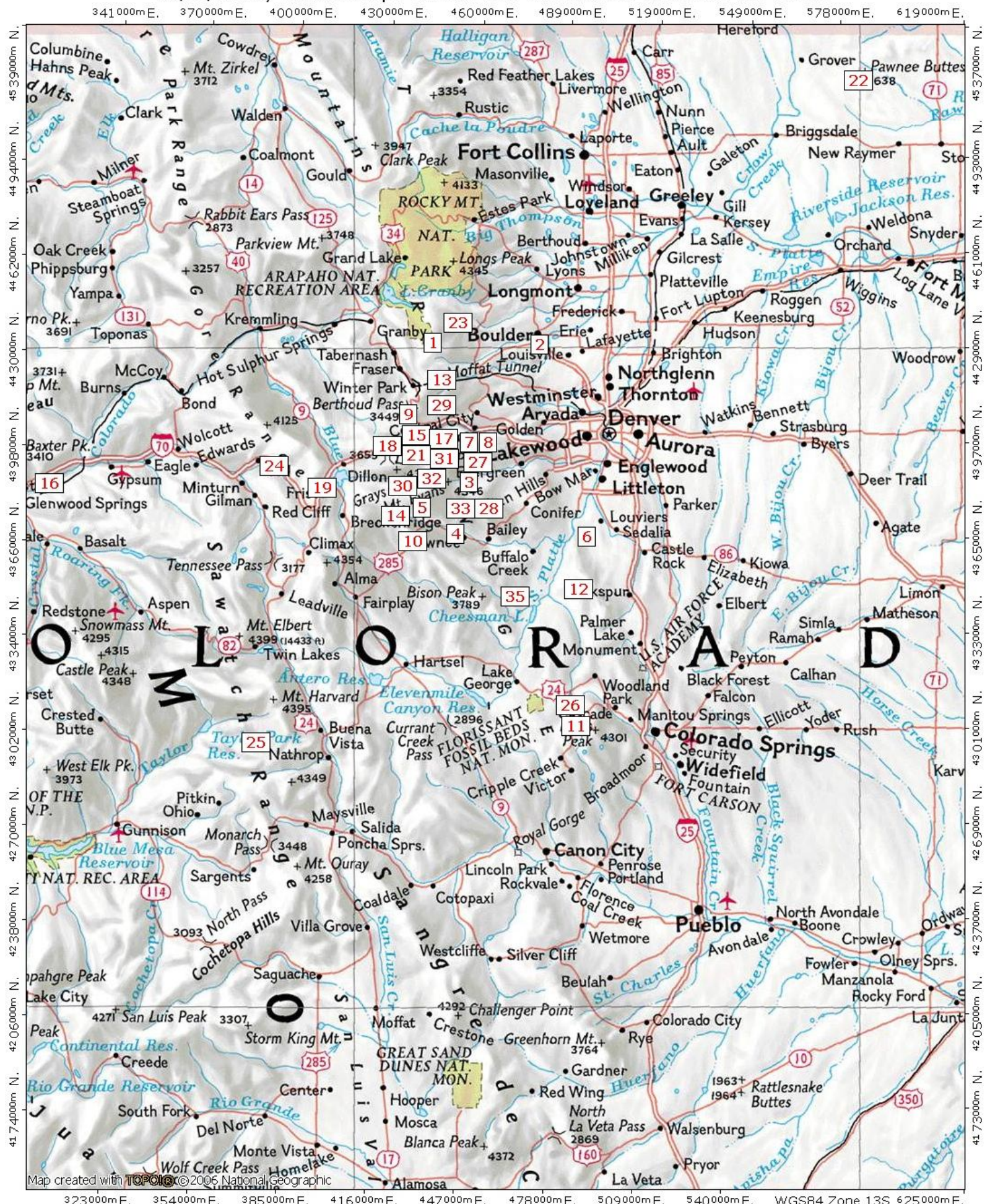


Day Hike Index 1

Day Hike Index 1

	Trail	Mileage one-way	Elev. Gain	Subjective Difficulty
1	Arapaho Pass	3.48	+2004	Moderate
2	Bear Peak	3.13	+680	Moderate
3	Beaver Meadows	8.78 loop	+2016	Easy to Moderate
4	Ben Tyler Trail	5.89	+3387	Moderate to Strenuous
5	Burning Bear	5.25	+1155	Easy to Moderate
6	Carpenter Peak	2.36	+973	Moderate to Strenuous
7	Chicago Lakes	4.24	+1198	Moderate
8	Chief Mountain	1.02	+996	Easy to Moderate
9	Colorado Mines Peak	1.40	+1187	Easy
10	Colorado Trail @ Kenosha Pass	4.06	+835	Easy
11	Crags Trail	2.09	+626	Easy
12	Devil's Head Fire Lookout	1.07	+998	Moderate
13	Forest Lakes	3.13	+1526	Moderate to Strenuous
14	Gibson Lake Trail	2.29	+1585	Moderate
15	Griffin Monument	1.81	+1279	Easy to Moderate
16	Hanging Lake	1.34	+1022	Moderate
17	Hell's Hole Trail	4.13	+1908	Easy to Moderate
18	Herman Gulch to Herman Lake	3.34	+1688	Moderate to Strenuous
19	North Ten Mile Creek	3.46	+917	Easy
20	Paint Mines Interpretive Park	Varies	Varies	Easy
21	Pavilion Point	2.45	+829	Easy
22	Pawnee Buttes	1.68	+0	Easy
23	Pawnee Pass	4.30	+2171	Moderate to Strenuous
24	Pitkin Lake	4.49	+2882	Moderate to Strenuous
25	Ptarmigan Lake	3.06	+1425	Moderate
26	Raspberry Mountain	2.20	+1225	Moderate

© 2008 ORIC All rights reserved.



Map created with TOPOIG © 2006 National Geographic

