



BEN TYLER

WINTER TRAIL

FYI: The map on the reverse side is not intended for navigation, but rather for general orientation.

P.S. More trail maps available at www.oriconline.org

Location: Lost Creek Wilderness
Pike National Forest
Off US 285 west of Shawnee

Contact Info: South Platte Ranger District
303-275-5610
www.fs.fed.us/r2

Length: 5.71 miles one-way (est. mileage rounded to the nearest ¼ mile)

Time: The average person snowshoes apx. 1 mile an hour, not including breaks. Adjust your time +/- based on terrain, snow conditions, wind speed, your skill and fitness level and whether you are snowshoeing, skiing or hiking.

Elevation Gain/Loss: +3392' -0' = +3392' (+2200' if you go to timberline)

Difficulty: Moderate to strenuous depending upon how far you go

Activities: Snowshoeing, skiing and hiking (when there's not enough snow)

Season: December through March (Check www.oriconline.org for snow depths and avalanche conditions)

Dogs permitted: On handheld leash and under owner's control

Permits: None required

Getting There from Denver: Take U.S. Highway 285 west. Drive approximately 2 ½ miles past Shawnee on U.S. Highway 285. Trailhead parking is on your left.

Maps: National Geographic Trails Illustrated # 105W and or Observation Rock, Mt. Logan and Shawnee USGS 7.5 topographic maps. **IMPORTANT:** Stay found with the aid of a topographic map, a compass, a GPS receiver and the skill to use them.

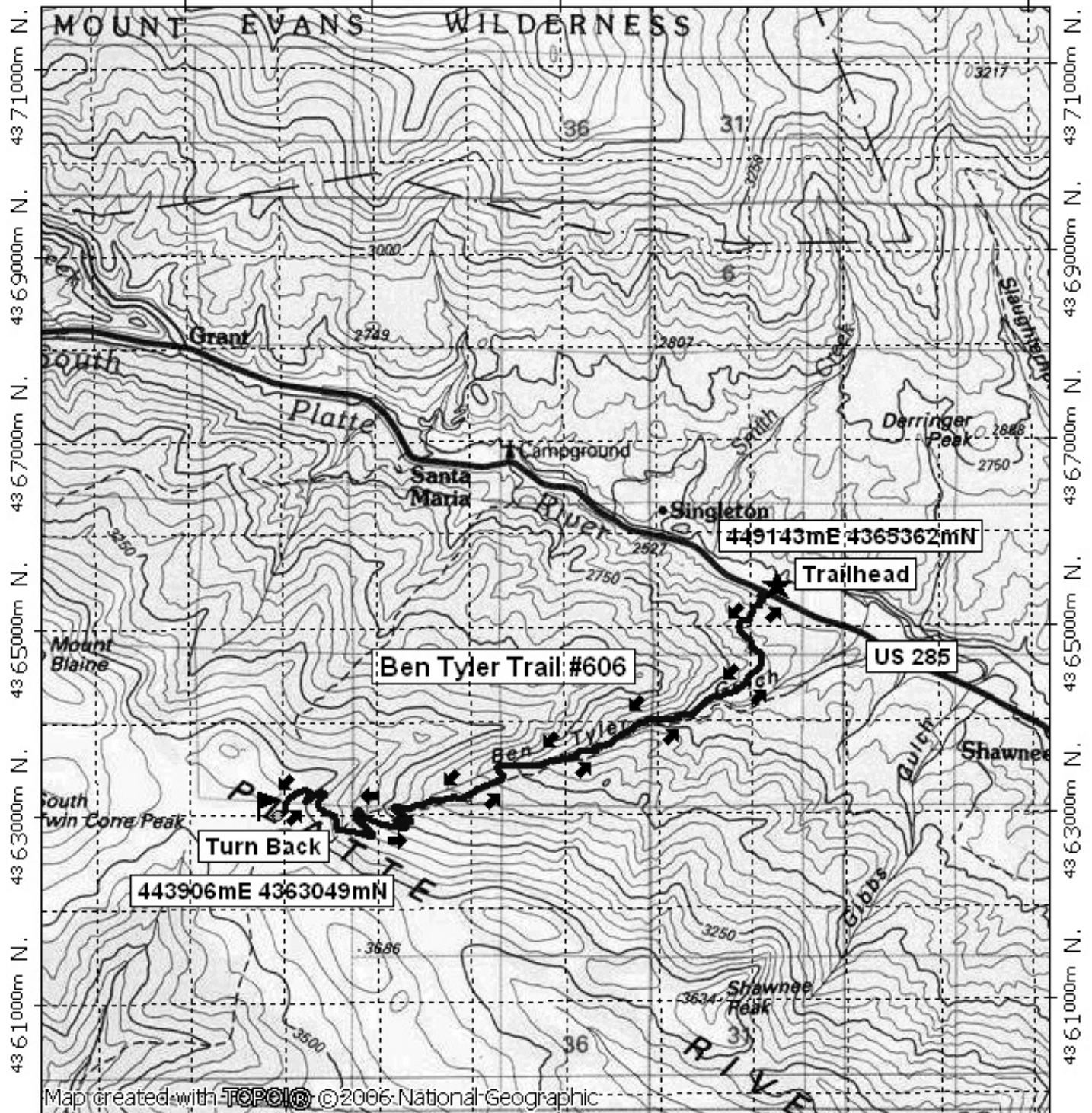
Safety Considerations and Supplemental Info: ■ You may have to walk the first part of this trail (due to a lack of snow) until you drop into Gibbs Gulch
■ Dress appropriately for winter conditions ■ Plan for shorter days in the Winter months

Trail Description: Up valley hike with views from the top. Follow the Ben Tyler Trail #606 from the parking area, over hills, and eventually drop into the stream valley of Gibbs Gulch. The trail then leaves Gibbs Gulch and progresses through forested terrain to timberline in the Platte River Mountains. Return the way you came. **Tip:** Contact the South Platte Ranger District for trail updates and snow depths.

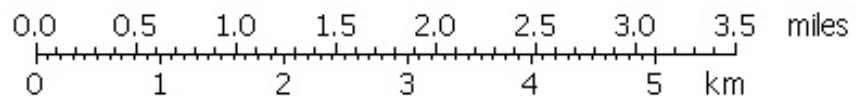
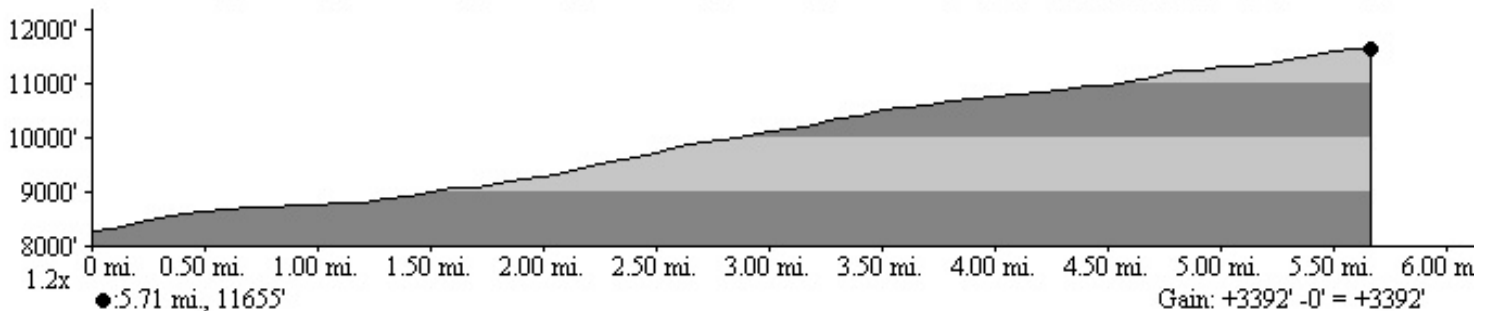
Highlights: ■ Views of terrain above timberline with wonderful views of distant mountain ranges ■ Connects with the Colorado Trail ■ Outstanding views to the North and South from the highest point ■ Remains of an old lumber camp along the way

Ben Tyler Winter Trail Final

443000m E, 445000m E, 447000m E, WGS84 Zone 13S 452000m E.



443000m E, 445000m E, 447000m E, WGS84 Zone 13S 452000m E.



TN MN
9 1/2°

10/27/07