

BOULDER LAKE

WINTER TRAIL

FYI: The map on the reverse side is not intended for navigation, but rather for general orientation.

P.S. More trail maps available at www.oriconline.org

Location: Eagles Nest Wilderness
White River National Forest
Off CO 9 N. of Silverthorne

Contact Info: Dillon Ranger District
970-468-5400
www.fs.fed.us/r2

Length: 4.03 miles one-way (est. mileage rounded to the nearest ¼ mile)

Time: The average person snowshoes apx. 1 mile an hour, not including breaks. Adjust your time +/- based on terrain, snow conditions, wind speed, your skill and fitness level and whether you are snowshoeing, skiing or hiking.

Elevation Gain/Loss: +1372' -1' = +1371'

Difficulty: Easy to Moderate

Activities: Snowshoeing, skiing and hiking (when there's not enough snow)

Season: December to March (Check www.oriconline.org for snow depths and avalanche conditions)

Dogs permitted: On a leash not longer than six feet in length

Permits: None required

Getting There from Denver: Take I-70 west to Silverthorne. Go north on CO Highway 9 to the Boulder Creek Trail (about 9 miles on west side of road). The trailhead is at the beginning of Forest Road 1376.

Maps: National Geographic Trails Illustrated #108E (eastside, top center), Latitude 40° Summit County and or the Willow Lakes USGS 7.5 topographic map. **IMPORTANT:** Stay found with the aid of a topographic map, a compass, a GPS receiver and the skill to use them.

Safety Concerns and Supplemental Info: ■ Dress appropriately for winter conditions ■ Plan for shorter days in the Winter months

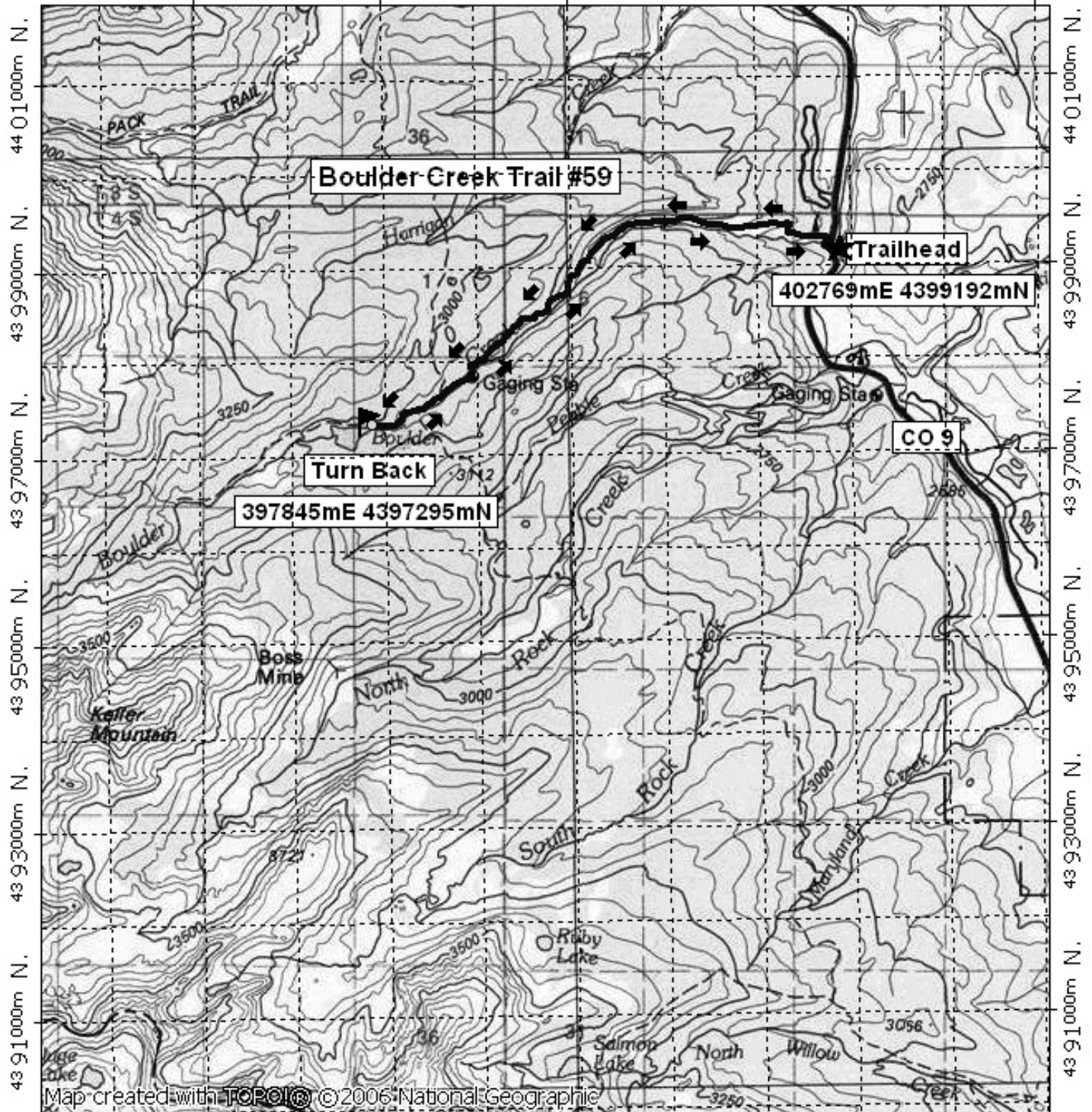
The Trail: The Boulder Creek Trail #59 follows Boulder Creek through the trees to the lake. It is steep at the beginning.

TIP: Contact the Dillon Ranger District for trail updates and snow conditions.

Highlights: ■ Views of Gore Range are spectacular ■ Beautiful lake ■ Groves of Aspen ■ Several small, frozen ponds along the way ■ Several meadows

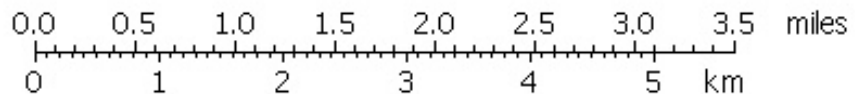
Boulder Creek Winter Trail

396000m E, 398000m E, 400000m E, WGS84 Zone 13S 405000m E.



Map created with **TOPOL!** © 2006 National Geographic

396000m E, 398000m E, 400000m E, WGS84 Zone 13S 405000m E.



TN MN
10°

10/27/07