

# Winter Trails

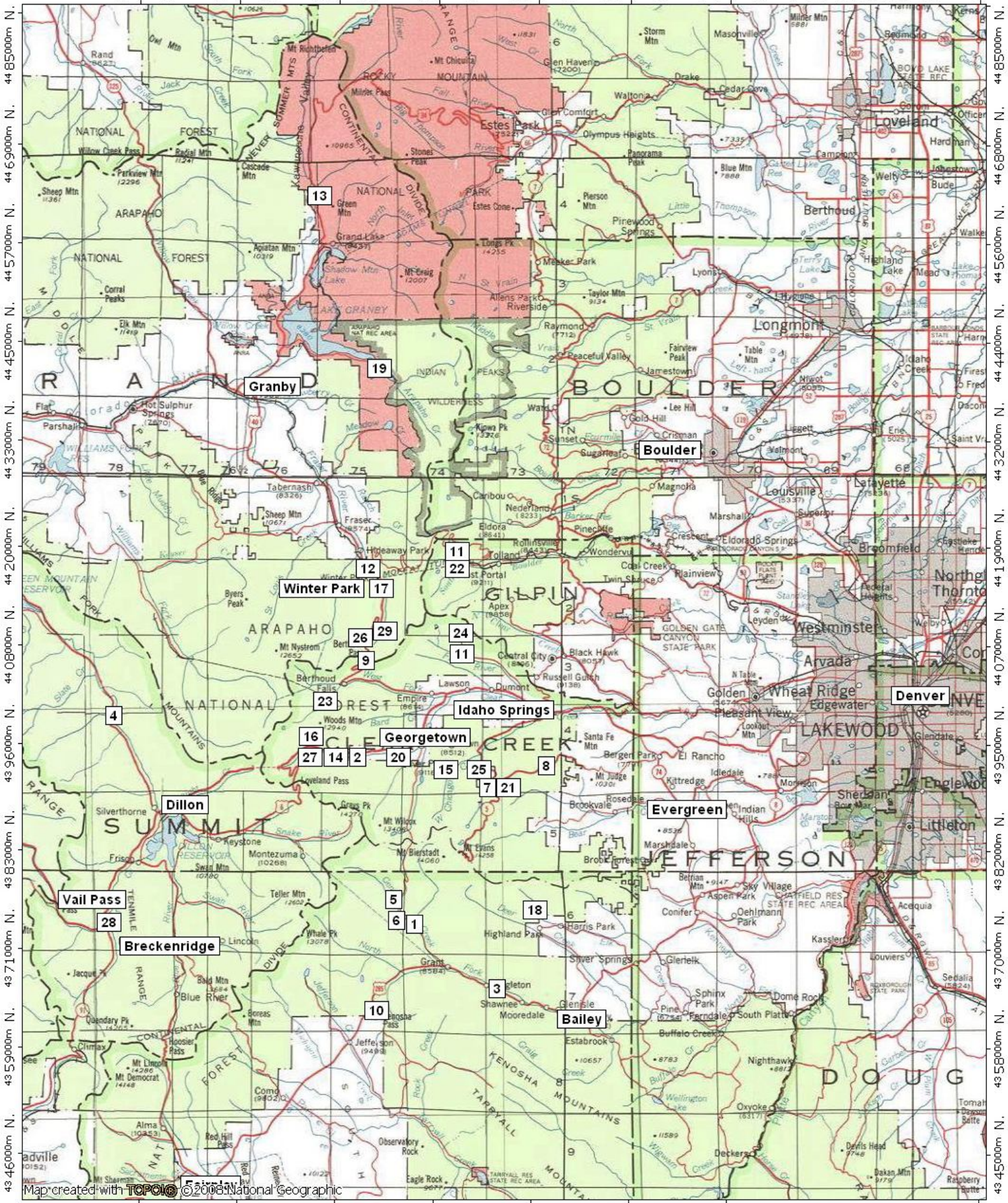
# Winter Trails Index

#	Trail	Mileage Out & Back	Net Gain/Loss	Subjective Difficulty
1	Abyss Lake	7 ½	+1044'	Moderate
2	Bakerville to Loveland (BLT)	10	+853'	Easy
3	Ben Tyler	11 ½	+3392'	Moderate to Strenuous
4	Boulder Lake	8	+1371'	Easy to Moderate
5	Bruno Gulch	4 ½	+750'	Easy to Moderate
6	Burning Bear	5 ½	+998'	Easy to Moderate
7	Chicago Lakes	8 ½	+764'	Moderate to Strenuous
8	Chief Mountain	2	+992'	Moderate
9	Colorado Mines Peak	2 ¾	+1185'	Easy to Moderate
10	Colorado Trail @ Kenosha Pass	8 ½	+144'	Easy
11	Forest Lakes	7	+1638'	Moderate to Strenuous
12	Fraser River	2	+115'	Easy
13	Green Mountain to Big Meadows	3 ½	+614'	Moderate
14	Grizzly Gulch	4 ½	+883'	Moderate
15	Hell's Hole	5	+1279'	Moderate to Strenuous
16	Herman Gulch	4 ½	+990'	Moderate to Strenuous
17	Jim Creek	1 ½	+169'	Easy
18	Meridian Trail	5 ¾	+1634'	Moderate
19	Monarch Lake	5 ½	0'	Moderate
20	Pavilion Point	5	+835'	Easy to Moderate
21	Resthouse Meadows	5 ½	+125'	Easy to Moderate
22	Roger's Lakes & Heart Lake	7 ¼	+2128'	Strenuous
23	Ruby Creek	3	+1115'	Moderate to Strenuous
24	Saint Mary's Glacier & Lake	1 ¼	+376'	Easy to Moderate
25	Second Creek to Hut	1 ½	+729'	Strenuous
26	South Chicago Creek	3	+724'	Moderate
27	Tee Pee Meadow	2	+534'	Easy
28	Watrous Gulch	2 ½	+992'	Moderate
29	Wheeler Lakes	6	+1411'	Moderate to Strenuous

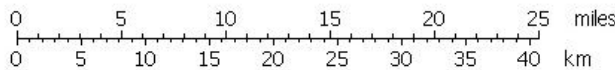
© 2008 ORIC All rights reserved.  
 ■ Updated: 3/11/2009 ■

# Winter Trails by Number

407000m.E. 419000m.E. 431000m.E. 443000m.E. 455000m.E. 466000m.E. 478000m.E. WGS84 Zone 13S 508000m.E.



405000m.E. 417000m.E. 429000m.E. 441000m.E. 453000m.E. 465000m.E. 477000m.E. WGS84 Zone 13S 508000m.E.



TN MN  
9 1/2°

10/09/08