



PAWNEE & BUCHANAN PASSES LOOP



BACKPACKING TRIP

FYI: The map on the reverse side is for general orientation, not for navigation.
P.S. Get and post trail updates at www.facebook.com/oriccolorado

Location: Indian Peaks Wilderness
Arapaho Nat'l Forest
Brainard Lk Rec Area

Contact Info: Boulder Ranger District
303-541-2500
www.fs.fed.us/r2

Length: 26.07 mile loop (estimate using Nat'l Geo Mapping Software)

Time: 2 nights. The average person hikes apx. 2 miles an hour. Adjust your time +/- based on terrain, trail and weather conditions and your skill and fitness level.

Elevation Gain/Loss: +6822' -6821' = +1'

Difficulty: Strenuous

Season: Mid-July through mid-September

Trail Users: Hikers and wildlife

Dogs: On hand-held leash at all times

Permits: Camping permits are required June 1 through Sept 15. Get them as far in advance as possible since this is a popular backpacking destination. They can be obtained by mail or in person at the Boulder Ranger District.

Getting There From Denver: I-25 to Boulder Turnpike (US Highway 36). West on US Highway 36 to Boulder. From Boulder take Colo Highway 119 to Nederland. Then north on Colo Highway 72 to the Brainard Lake Road (CR 102). Turn left on the Brainard Lake Road and drive to the Long Lake parking lot.

Maps: Nat'l Geo Trails Illustrated #102, Sky Terrain: S. Rocky Mountain Nat'l Park and Indian Peaks Wilderness. **IMPORTANT:** Stay found with the aid of a topographic map, a compass, a GPS receiver and the skill to use them.

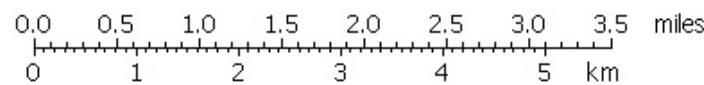
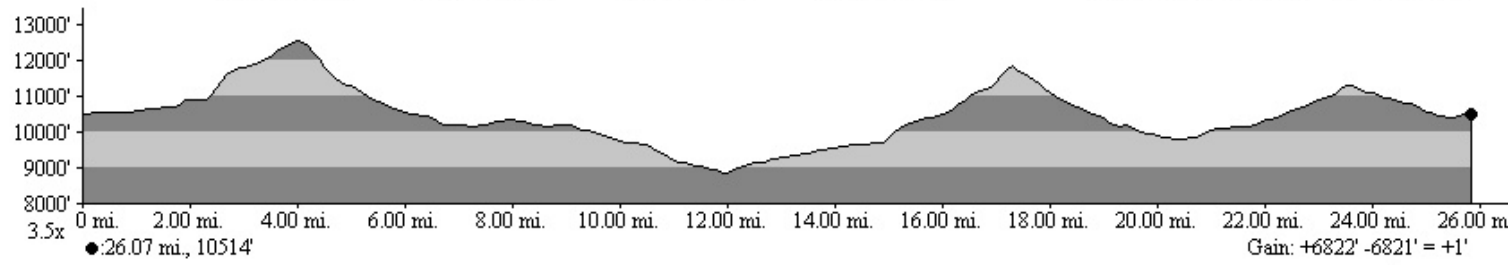
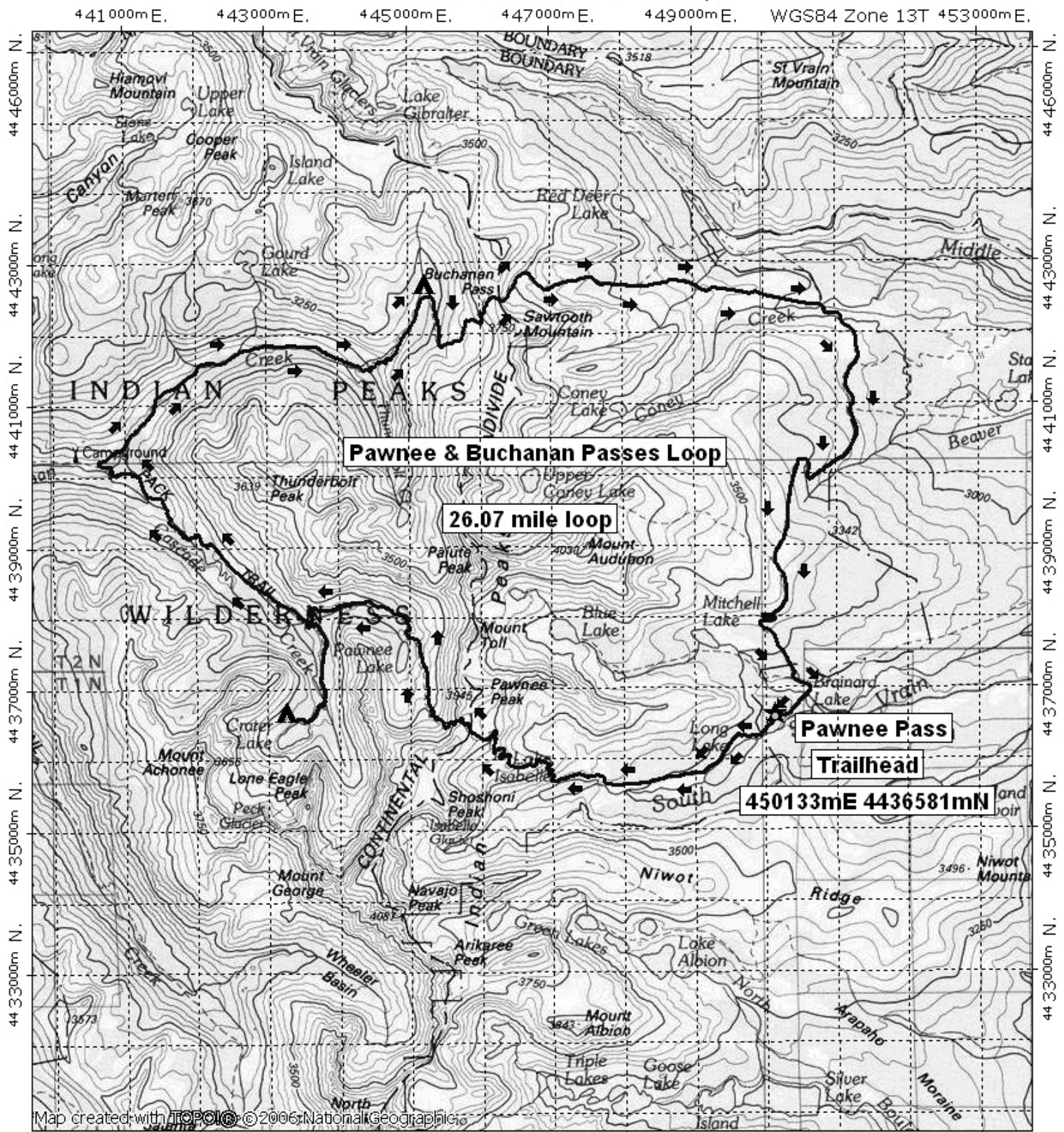
Safety Considerations and Supplemental Info: ■ Get updates on weather and fire restrictions at www.oriconline.org ■ No campfires are allowed east of the Continental Divide ■ Be prepared for mosquitoes from July through Sept

Trail Description: The trail starts at the Brainard Lk Rec Area. **DAY 1:** From the Long Lk trailhead take the Pawnee Pass Tr over the top of Pawnee Pass to the junction with the Crater Lk Tr. Turn left up the trail to Crater Lk and camp in the designated area. **DAY 2:** Return to the Pawnee Pass Tr and turn left onto the Cascade Crk Tr and follow it to the junction of the Buchanan Pass Tr. Turn right and head up the Buchanan Pass Tr for apx. 2 miles into the Fox Prk hanging valley and camp. **DAY 3:** Hike over the top of Buchanan Pass and continue to the junction with the Beaver Creek Tr. Turn right and hike to the Mitchell Lk parking lot to end this loop. The Mitchell Lk parking lot is apx. 1 mile from the Long Lk parking lot. **TIP:** Contact the Boulder Ranger District for trail updates.

Highlights: ■ This is a trail that starts and ends in a beautiful evergreen forest
■ The views from the passes are spectacular ■ The wildflowers are great in July



Pawnee & Buchanan Passes Loop



TN ↑ MN
99.2°
03/07/08