

DEVIL'S HEAD FIRE LOOKOUT



DAY HIKE

FYI: The map on the reverse side is for general orientation, not for navigation.
P.S. Get and give trail updates at www.facebook.com/oriccolorado

Location: Pike National Forest
Rampart Range
42 miles SW of Denver

Contact Info: South Platte Ranger District
719-275-5610
www.fs.fed.us/r2

Length: 1.07 miles one-way (estimate using the Nat'l Geo Mapping Software)

Time: The average person hikes apx. 2 miles an hour. Adjust your time +/- based on terrain and weather conditions and your skill and fitness level and whether you are hiking or trail running. GPS drive time is approximately 1:10 from the REI Flagship Store-Denver.

Elevation Gain/Loss: +998 -101 = +897

Difficulty: Moderate

Trail Users: Hikers

Season: Memorial Day weekend through November

Dogs: On hand-held leash

Permits: None required

Getting There From Denver: Take US Highway 85 south to Sedalia. Turn right, at Sedalia, onto CO Highway 67 and head west 10 miles to the Rampart Range Road. Turn left on the Rampart Range Road and travel south 9.25 miles to the trailhead parking. The Devil's Head turn off is marked with a sign.

Maps: Nat'l Geographic Trails Illustrated #135 and or Devil's Head USGS 7.5 topographic map. **IMPORTANT:** Stay found with the aid of a topographic map, a compass, a GPS receiver and the skill to use them.

Safety Considerations and Supplemental Info: ■ Do not climb stairs to fire lookout when lightning is in the area ■ Lookout Tower is open from Memorial Day weekend to mid to late September, depending on the weather ■ Check www.oriconline.org for fire restrictions ■ Be prepared for mosquitoes from May through September

Trail Description: The hike follows a well defined trail with occasional switch backs to a ranger cabin at the trail's end. From this point it is necessary to climb a set of well constructed stairs (143 steps) to reach the fire lookout building. Restrooms are open at the end of the trail. **TIP:** Contact the South Platte Ranger District for trail updates.

Highlights: ■ Expansive views of both the mountains to the west and the prairie to the east ■ Incredible granite rock outcroppings ■ Pass through a dense and fragrant forest ■ See the last working fire lookout tower in the Pike Nat'l Forest

Visit us in the REI DENVER FLAGSHIP STORE

OUTDOOR RECREATION INFORMATION CENTER ■ 1416 Platte Street ■ Denver CO 80202

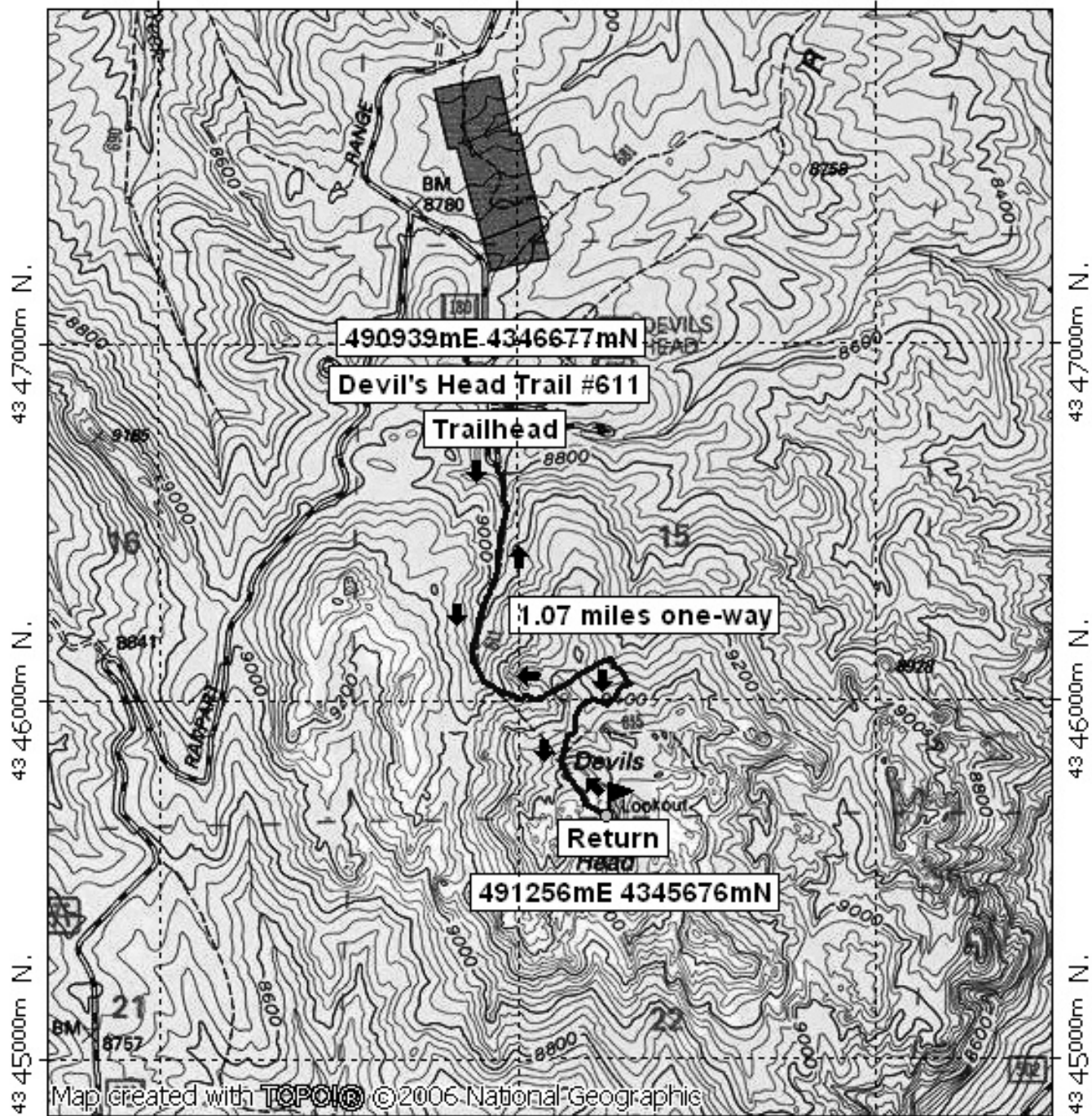
Ask us. We'll Tell You Where To Go ■ www.oriconline.org ■ Updated: 6-1-2013

Follow us on: ■ facebook.com/oriccolorado ■ Twitter: @oricbryan

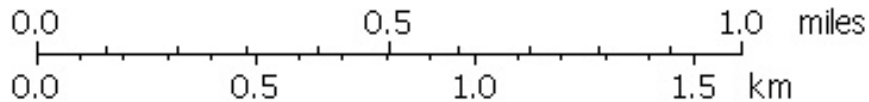
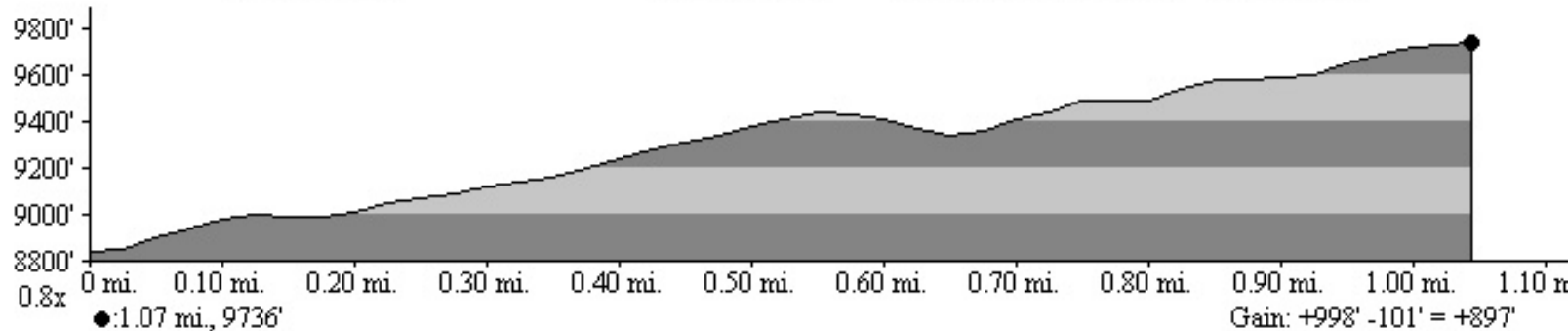


Devil's Head Fire Lookout

490000m E, 491000m E, WGS84 Zone 13S 492000m E.



490000m E, 491000m E, WGS84 Zone 13S 492000m E.



TN MN
9 1/2°
04/23/08