

## GRIFFIN MONUMENT

### DAY HIKE

**FYI:** The map on the reverse side is for general orientation, not for navigation.

**P.S.** Get and give trail updates at [www.facebook.com/oriccolorado](http://www.facebook.com/oriccolorado)

**Location:** Arapaho National Forest  
Near Silver Plume, CO

**Contact Info:** Clear Creek Ranger District  
303-567-4382  
[www.fs.fed.us/r2](http://www.fs.fed.us/r2)

**Length:** 1.81 miles one-way (estimate using the Nat'l Geo Mapping Software)

**Time:** The average person hikes approximately 2 miles an hour. Adjust your time +/- based on terrain and weather conditions and your skill and fitness level and whether you are hiking or trail running.

**Elevation Gain/Loss:** See trail profile on reverse side

**Difficulty:** Easy to moderate on mining roads with few obstacles

**Trail Users:** Hikers and Cyclists

**Season:** Mid June through end of October

**Dogs:** Under owner's control

**Permits:** None required

**Getting There From Denver:** Take I-70 west. Get off I-70 at Exit 221 at Silver Plume. Park on the street in town, by the bakery, and away you go.

**Maps:** National Geographic Trails Illustrated #104E and or the Georgetown USGS 7.5 topographic map. **IMPORTANT:** Stay found with the aid of a topographic map, a compass, a GPS receiver and the skill to use them.

**Safety Considerations and Supplemental Info:** ■ Old mine shafts  
■ Lightning from afternoon thunderstorms ■ Check [www.oriconline.org](http://www.oriconline.org) for fire restrictions ■ Prepare for mosquitoes from June through September

**Trail Description:** From Silverplume hike up the road, switchbacking and heading generally north and a little West to the road's end at Brown Gulch. The Griffin Monument is a few yards from the end of the road (by the 7:30 mine) down a short path to the left (south). **TIP:** Contact the Idaho Springs Visitor Center (303-567-4382) for trail updates.

**Highlights:** ■ Sample a part of Colorado's Mining History ■ In 1887 Clifford Griffin managed a mine nearby, and was despondent over lost love, fatally shooting himself. His father buried him and erected the monument.

© 2007 ORIC All rights reserved.

Visit us in the REI DENVER FLAGSHIP STORE

OUTDOOR RECREATION INFORMATION CENTER ■ 1416 Platte Street ■ Denver CO 80202

Ask us. We'll Tell You Where To Go ■ [www.oriconline.org](http://www.oriconline.org) ■ Updated: 2-4-2018

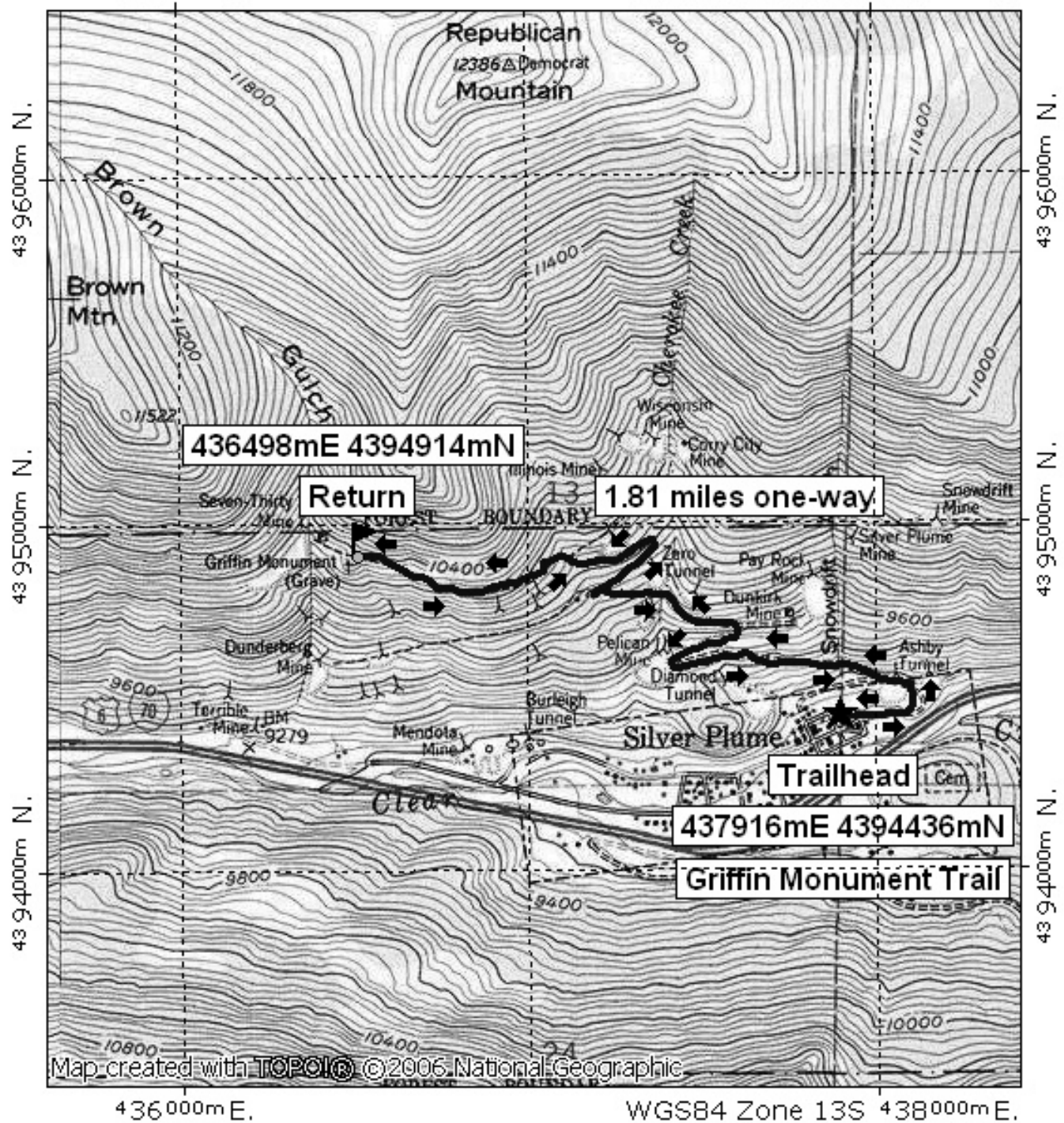
Follow us on: ■ [facebook.com/oriccolorado](http://facebook.com/oriccolorado) ■ Twitter: @oricbryan



# Griffin Monument Day Hike

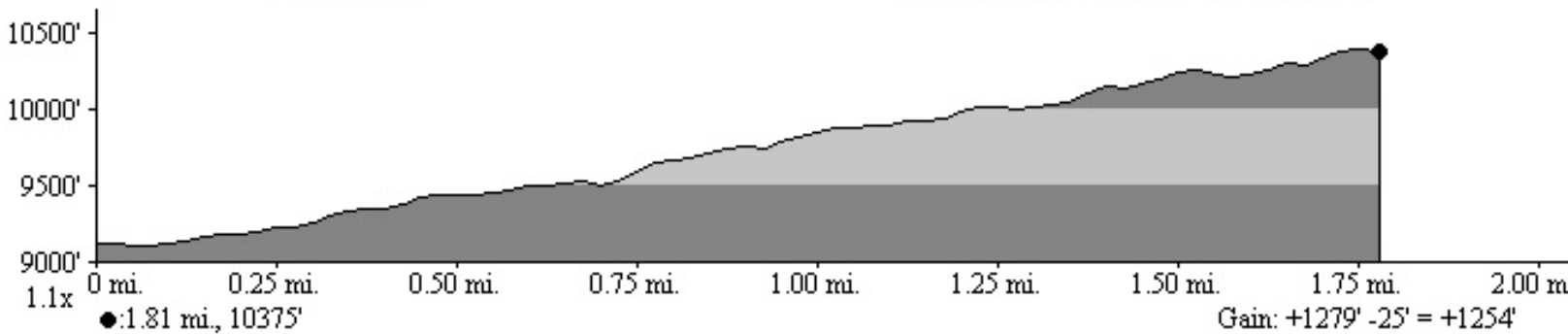
436 000m E.

WGS84 Zone 13S 438 000m E.

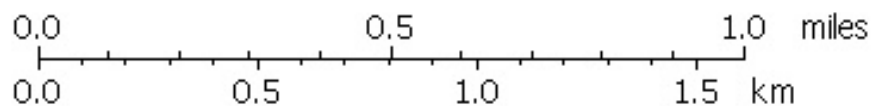


436 000m E.

WGS84 Zone 13S 438 000m E.



Gain:  $1279' - 25' = +1254'$



TN MN  
9 1/2°  
04/24/08