



HELL'S HOLE TRAIL

DAY HIKE

FYI: The map on the reverse side is for general orientation, not for navigation.

P.S. Get and give trail updates at www.facebook.com/oriccolorado

Location: Mt. Evans Wilderness
Arapaho National Forest
Near W. Chicago Creek CG

Contact Info: Clear Creek Ranger District
303-567-4382
www.fs.fed.us/r2

Length: 4.13 miles one-way (estimate using the Nat'l Geo Mapping Software)

Time: The average person hikes approximately 2 miles an hour. Adjust your time +/- based on terrain and weather conditions and your skill and fitness level and whether you are hiking or trail running.

Elevation Gain/Loss: See trail profile on reverse side

Difficulty: Moderate

Trail Users: Hikers and wildlife

Season: June through the first week in October

Dogs: On hand-held leash

Permits: Free use permit at trailhead

Getting There From Denver: Take I-70 West from Denver. Get off I-70 at Exit 240 and get on Colorado Highway 103. Take CO 103 south from Idaho Springs. At the first switch back, go straight onto Clear Creek County # 114 to its end at the West Chicago Creek Campground

Maps: National Geographic Trails Illustrated Map # 104 (eastside of map).

IMPORTANT: Stay found with the aid of a topographic map, a compass, a GPS receiver and the skill to use them.

Safety Considerations and Supplemental Info: ■ Afternoon storms and lightning ■ Check www.oriconline.org for fire restrictions ■ Prepare for mosquitoes from June through September

Trail Description: The trail starts at the south end of the West Chicago Creek Campground at 9600 feet. The first part is steady uphill, roughly paralleling West Chicago Creek. About one mile from the trailhead, you enter the Mount Evans Wilderness Area. Near timberline, the trail levels off somewhat. The route terminates above the spectacular Hell's Hole Basin below the sheer face of Grey Wolf Mountain at 11,200 feet. **TIP:** Contact the Idaho Springs Visitor Center (303-567-4382) for trail updates.

Highlights: ■ Hell's Hole Basin

© 2007 ORIC All rights reserved.

Visit us in the REI DENVER FLAGSHIP STORE

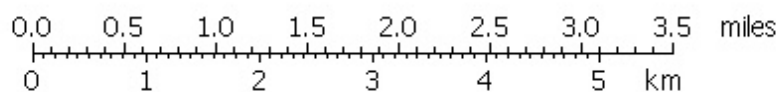
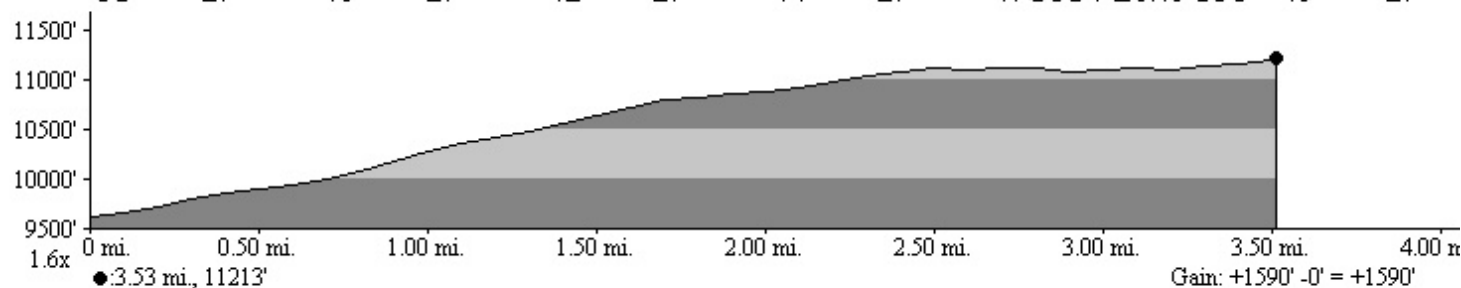
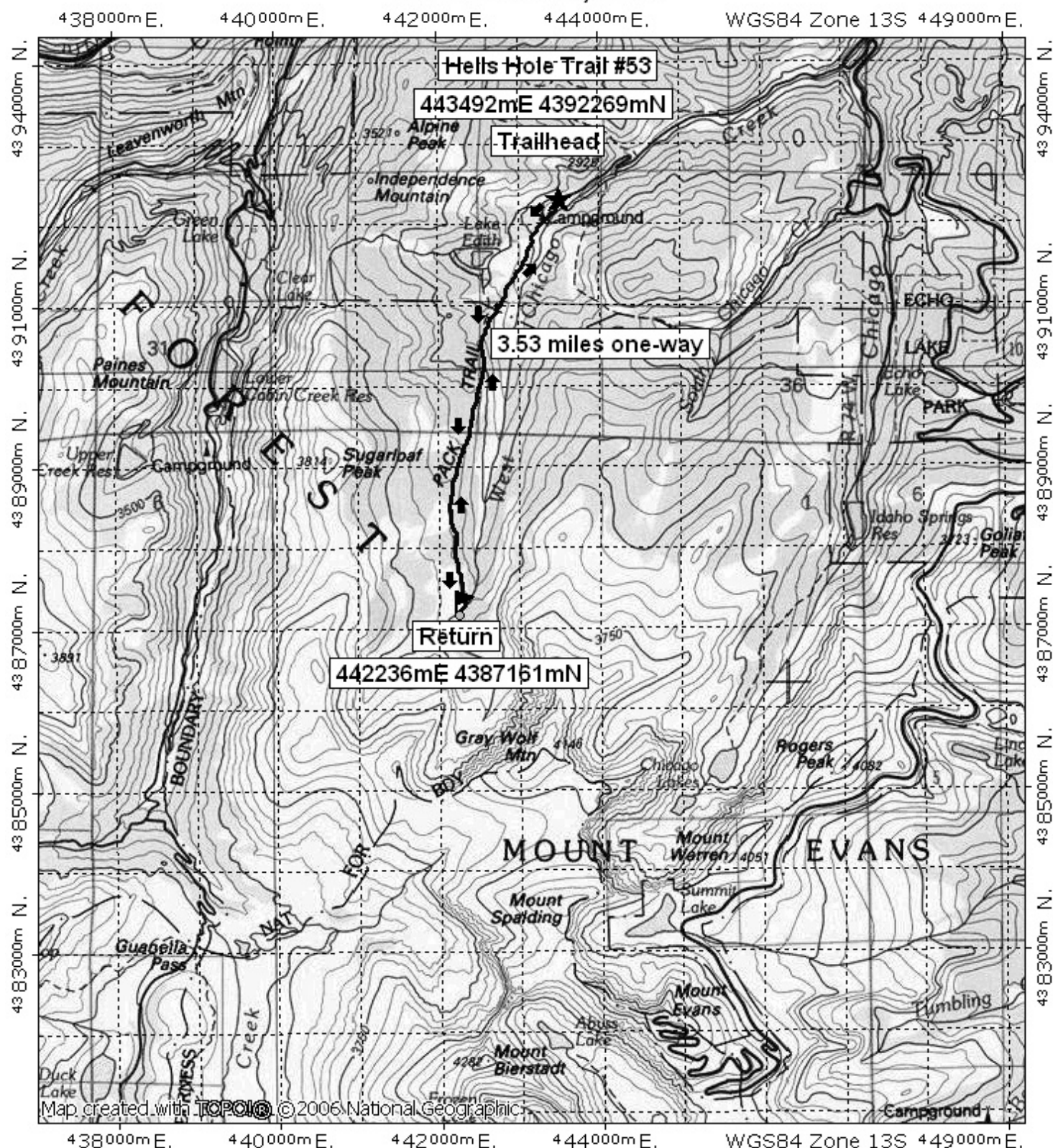
OUTDOOR RECREATION INFORMATION CENTER ■ 1416 Platte Street ■ Denver CO 80202

Ask us. We'll Tell You Where To Go ■ www.oriconline.org ■ Updated: 2-4-2018

Follow us on: ■ facebook.com/oriccolorado ■ Twitter: @oricbryan



Hell's Hole Day Hike



TN MN
9 1/2°
04/30/08