



PAVILION POINT

DAY HIKE

FYI: The map on the reverse side is for general orientation, not for navigation.

P.S. Get and give trail updates at www.facebook.com/oriccolorado

Location: Arapaho National Forest
Off I-70 near Silverplume
South of Georgetown

Contact Info: Clear Creek Ranger District
303-567-4382
www.fs.fed.us/r2

Length: 2.45 miles one-way (estimate using the Nat'l Geo Mapping Software)

Time: The average person hikes approximately 2 miles an hour. Adjust your time +/- based on terrain, weather conditions, your skill and fitness level and whether you are hiking or trail running.

Elevation Gain/Loss: See trail profile on reverse side (This is on an old railroad bed)

Difficulty: Easy

Trail Users: Hikers and mountain bikers

Season: Mid June through early October

Dogs: Under owner's control

Permits: None

Getting There From Denver: I-70 west to Silver Plume. Get off I-70 at exit 226 and proceed to the trailhead parking area.

Maps: National Geographic Trails Illustrated Map # 104E and or the Georgetown USGS 7.5 topographic map. **IMPORTANT:** Stay found with the aid of a topographic map, a compass, a GPS receiver and the skill to use them.

Safety Considerations and Supplemental Info: ■ Be careful around mine shafts, old mining structures and buildings. The old mines can be full of noxious gas and bad water ■ Potential for altitude sickness for those not acclimatized ■ Afternoon thunderstorms and lightning ■ Check www.oriconline.org for fire restrictions ■ Prepare for mosquitoes from June through September

Trail Description: The trail begins as a road on the South side of I-70 just west of the Narrow Gage Railroad Station. The road continues about 1.75 miles before changing to a trail. **TIP:** Contact the Idaho Springs Visitor Center (303-567-4382) for trail updates.

Highlights: ■ Many old mines and mining structures to explore ■ The remains of a historic pavilion overlooking Georgetown, and the surrounding valleys. This pavilion was a favorite destination for day trips during the late 19th and early 20th centuries



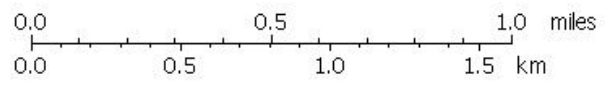
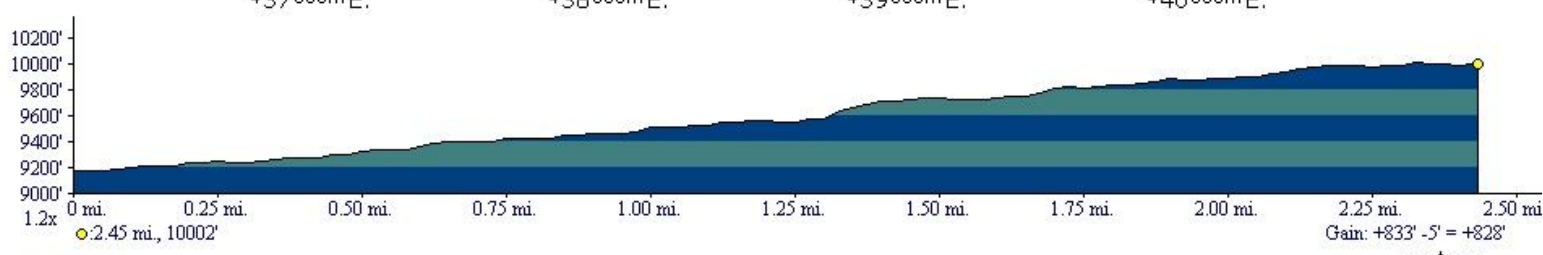
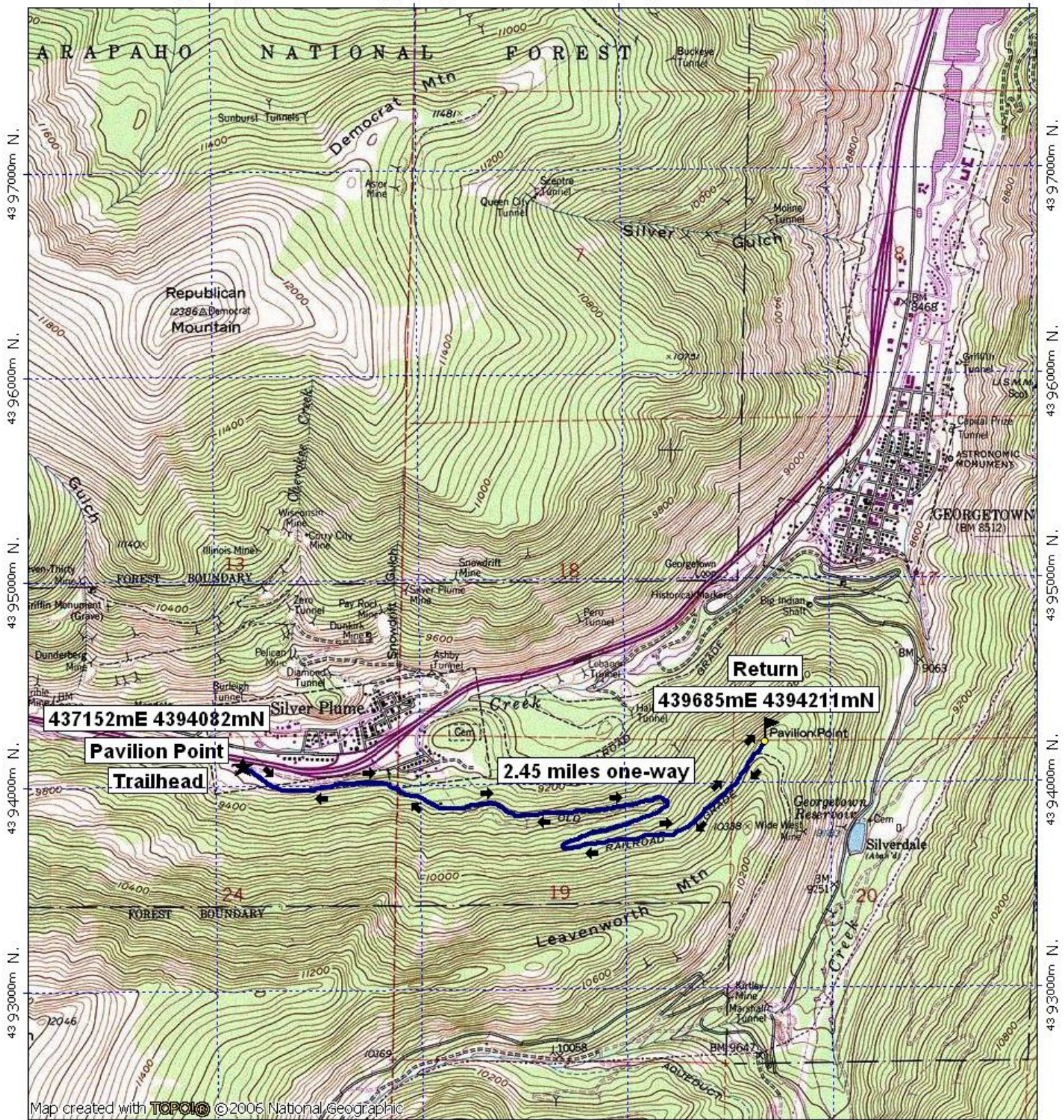
Pavilion Point Day Hike

437000m E.

438000m E.

439000m E.

WGS84 Zone 13S 441000m E.



TN MN
9 1/2°
07/09/08