

RESTHOUSE TRAIL TO LINCOLN LAKE



DAY HIKE

FYI: The map on the reverse side is for general orientation, not for navigation.

P.S. Get and give trail updates at www.facebook.com/oriccolorado

Location: Mt. Evans Wilderness
Arapaho National Forest
Near Echo Lake CG

Contact Info: Clear Creek Ranger District
303-567-4382
www.fs.fed.us/r2

Length: 5.29 miles one-way (estimate using the Nat'l Geo Mapping Software)

Time: The average person hikes approximately 2 miles an hour. Adjust your time +/- based on terrain and weather conditions and your skill and fitness level and whether you are hiking or trail running.

Season: End of June through September

Elevation Gain: See trail profile on reverse side

Difficulty: Easy to moderate

Trail Users: Hikers

Dogs: Under owner's control

Permits: None

Getting There From Denver: Take I-70 west to Idaho Springs. Go south on Colorado Highway 103 to Echo Lake. Trailhead is located near the junction of Colorado Highway 103 and Colorado Highway 5 (Mt Evans Road) near the restrooms at the Echo Lake campground.

Maps: National Geographic Trails Illustrated #104E and or the Harris Park and Idaho Springs USGS topographic maps. **IMPORTANT:** Stay found with the aid of a topographic map, compass, GPS receiver and the skill to use them.

Safety Considerations: ■ Afternoon thunderstorms and lightning ■ Prepare for mosquitoes from June through September

Trail Description: The first mile climbs gradually through the trees, and then drops into the Vance Creek drainage. The trail climbs once again from the meadows at Vance Creek eventually opening into a meadow where 700 acres of forest burned in the 1962 Lincoln Lake fire. The trail continues to Lincoln Lake. Return the way you came. **SUGGESTION:** Contact the Idaho Springs Visitor Center (303-567-4382) for trail updates.

Highlights: ■ Beautiful views of the slopes of Mt Evans to the west ■ The burned area has a ethereal quality as you stand at timberline high on the east side of the Mt Evans massive ■ Beautiful Lincoln Lake

© 2007 ORIC All rights reserved.

Visit us in the REI DENVER FLAGSHIP STORE

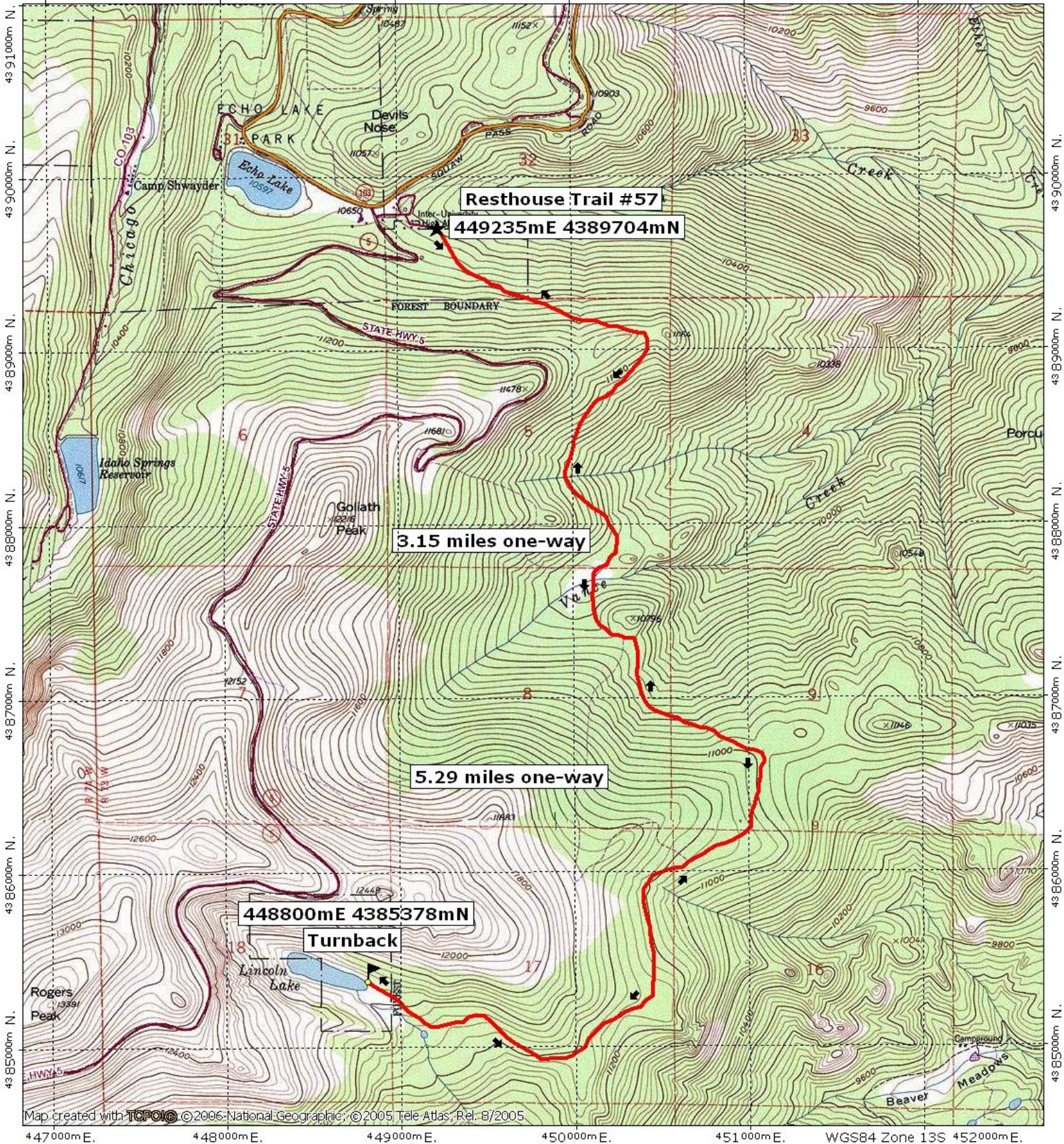
OUTDOOR RECREATION INFORMATION CENTER ■ 1416 Platte Street ■ Denver CO 80202

Ask us. We'll Tell You Where To Go ■ www.oriconline.org ■ Updated: 2-8-2018

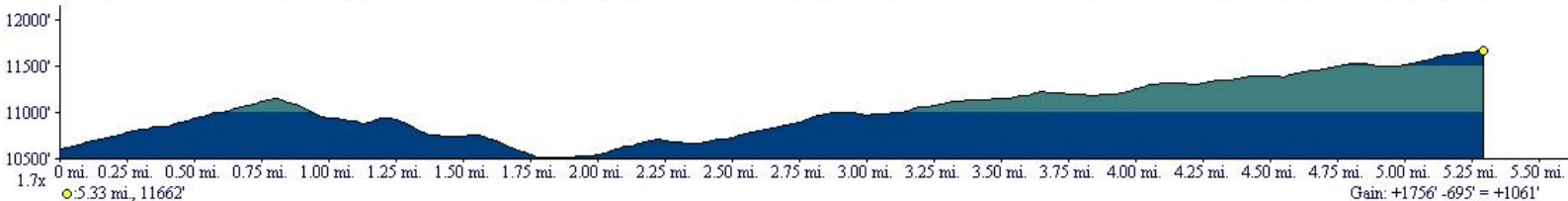
Follow us on: ■ facebook.com/oriccolorado ■ Twitter: @oricbryan



447000mE, 448000mE, 449000mE, 450000mE, 451000mE, WGS84 Zone 13S 452000mE,



Map created with TOPOLG © 2006 National Geographic; © 2005 Tele Atlas, Rel. 8/2005



0.0 0.5 1.0 miles
0.0 0.5 1.0 1.5 km

TN MN
10°
04/24/09