

# SAINT MARY'S GLACIER & LAKE



## DAY HIKE

**FYI:** The map on the reverse side is for general orientation, not for navigation.

**P.S.** Get and give trail updates at [www.facebook.com/oriccolorado](http://www.facebook.com/oriccolorado)

**Location:** Arapaho National Forest  
Off Fall River Road  
Near the town of Alice

**Contact Info:** Clear Creek Ranger District  
303-567-4382  
[www.fs.fed.us/r2](http://www.fs.fed.us/r2)

**Length:** .82 miles one-way (estimate using the Nat'l Geo Mapping Software)

**Time:** The average person hikes approximately 2 miles an hour. Adjust your time +/- based on terrain and weather conditions and your skill and fitness level and whether you are hiking or trail running.

**Season:** Mid June though mid October

**Elevation Gain:** See trail profile on reverse side

**Difficulty:** Easy to Moderate

**Trail Users:** Hikers

**Dogs:** On hand-held leash

**Permits:** None required

**Getting There:** Exit I-70 at Fall River Road (Clear Creek County Road 275) or Exit #238. Follow road about 8 miles to the signed St. Mary's Glacier trailhead. Park just by the trailhead on the left side (west) the road. **FYI:** The March 12, 2008 edition of the Clear Creek Courant indicates that a private land owner is now charging \$5.00 to park.

**Maps:** National Geographic Trails Illustrated #103E and or the Empire USGS 7.5 topographic map. **IMPORTANT:** Stay found with the aid of a topographic map, compass, a GPS receiver and the skill to use them.

**Safety Considerations and Supplemental Info:** ■ Glacier travel, without specialized equipment and training, may result in death or serious injury  
■ Afternoon thunderstorms and lightning ■ Prepare for mosquitoes from June through September

**Trail Description:** This trail is somewhat steep and rocky, but is less than one mile long. Easy access to hiking James Peak and Kingston Peak. **HINT:** Contact the Idaho Springs Visitor Center (303-567-4382) for trail updates.

**Highlights:** ■ The hike through lodgepole pines gives way to a beautiful alpine lake and above the lake St. Mary's Glacier ■ Alpine views ■ Option for a side trip to Kingston Peak and or James Peak

Visit us in the REI DENVER FLAGSHIP STORE

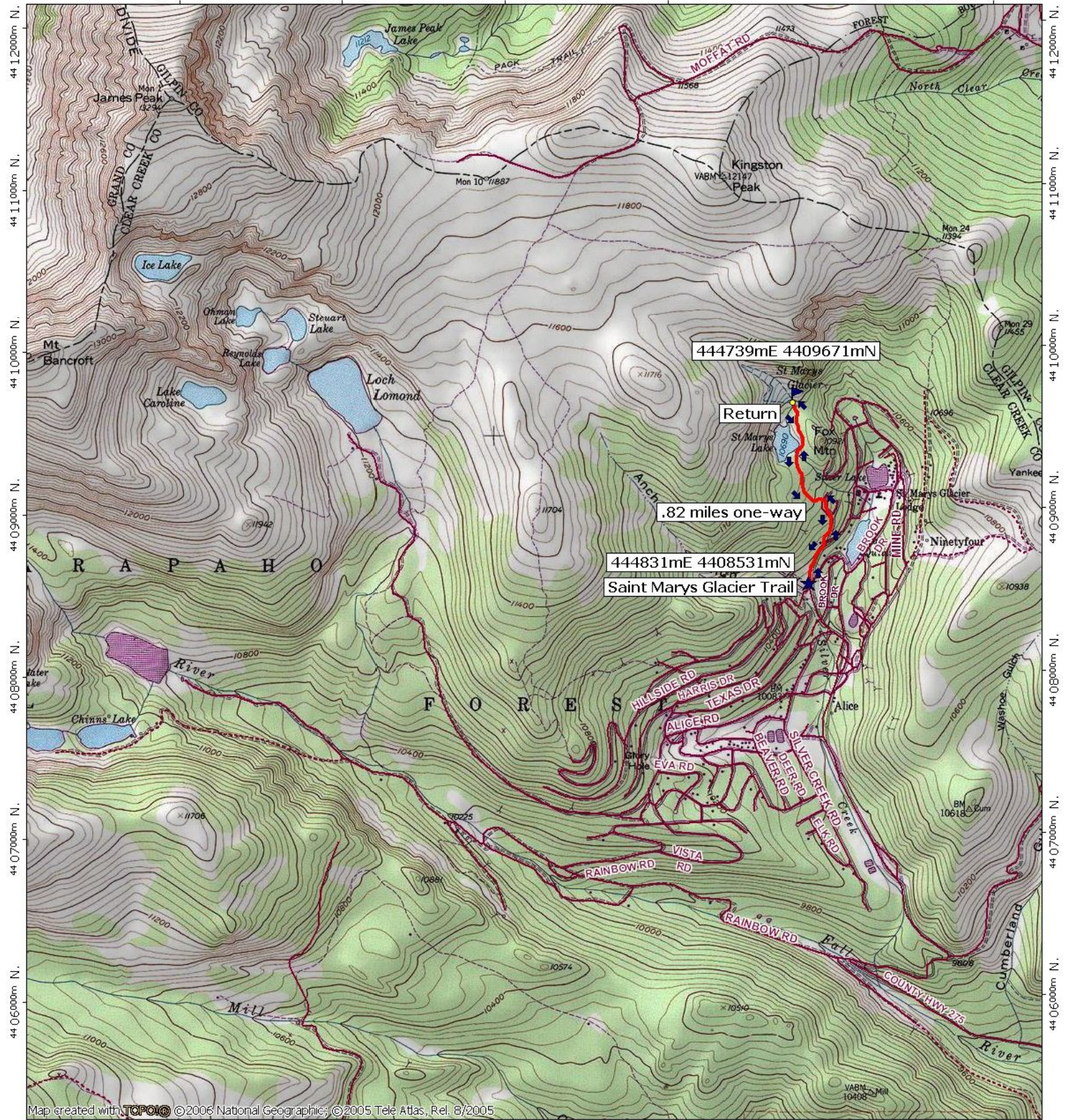
**OUTDOOR RECREATION INFORMATION CENTER** ■ 1416 Platte Street ■ Denver CO 80202

Ask us. We'll Tell You Where To Go ■ [www.oriconline.org](http://www.oriconline.org) ■ Updated: 2-7-2018

Follow us on: ■ [facebook.com/oriccolorado](https://www.facebook.com/oriccolorado) ■ Twitter: @oricbryan







Map created with TOPOLINK © 2005 National Geographic, © 2005 Tele Atlas, Rel. 8/2005

