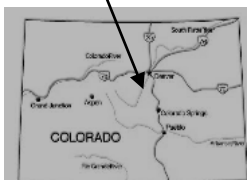


TANGLEWOOD CREEK TO ROSALIE PEAK



DAY HIKE

FYI: The map on the reverse side is for general orientation, not for navigation.

P.S. Get and give trail updates at www.facebook.com/oriccolorado

Location: Mt. Evans Wilderness
Arapaho National Forest
43 miles from REI Flagship

Contact Info: Clear Creek Ranger District
303-567-4382
www.fs.fed.us/r2

Length: 4.57 miles one-way (estimate using the Nat'l Geo Mapping Software)

Time: The average person hikes approximately 2 miles an hour. Adjust your time +/- based on terrain and weather conditions and your skill and fitness level and whether you are hiking or trail running.

Elevation Gain/Loss: See trail profile on reverse side

Difficulty: Strenuous to Challenging

Trail Users: Hikers

Season: June through September

Dogs permitted: On hand-held leash

Permits: None required

Getting There From Denver: Take U.S. Highway 285 west to Pine Junction. Continue west from Pine Junction for about 4 ½ miles to the turn-off for Deer Creek Road (Park County Road 43A). Turn right onto Park County Road 43A and follow it for approximately 6 ½ miles at which point you will need to branch off to the left to stay on Park County Road 43A. Continue on Park County Road 43A for another 1 ½ to the Deer Creek Campground. And then go about a mile past the campground to the Deer Creek Trailhead.

Maps: National Geographic Trails Illustrated #104E and or the Harris Park USGS 7 ½ topographic map. **IMPORTANT:** Stay found with the aid of a topographic map, compass, GPS receiver and the skill to use them.

Safety Considerations and Supplemental Info: ■ Afternoon thunderstorms and lightning ■ Begin your climb early ■ Be off the peak by noon ■ Prepare for mosquitoes from May through September

Trail Description: Take Forest Trail #636 from the Deer Creek trailhead. After approximately 3 miles you'll reach the top of Pegmatite Points Ridge. Leaving the trail, head west following this ridge (no trail) to the summit of Rosalie Peak (apx 1500 feet elevation gain). Return the way you came. **TIP:** Contact the Idaho Springs Visitor Center (303-567-4382) for trail updates.

Highlights: ■ Calypso Orchids ■ Bristlecone Pines ■ Rocky outcroppings
■ Rosalie Peak (13,576 feet) ■ Mountain views ■ Wildflowers in season

© 2007 ORIC All rights reserved.

Visit us in the REI DENVER FLAGSHIP STORE

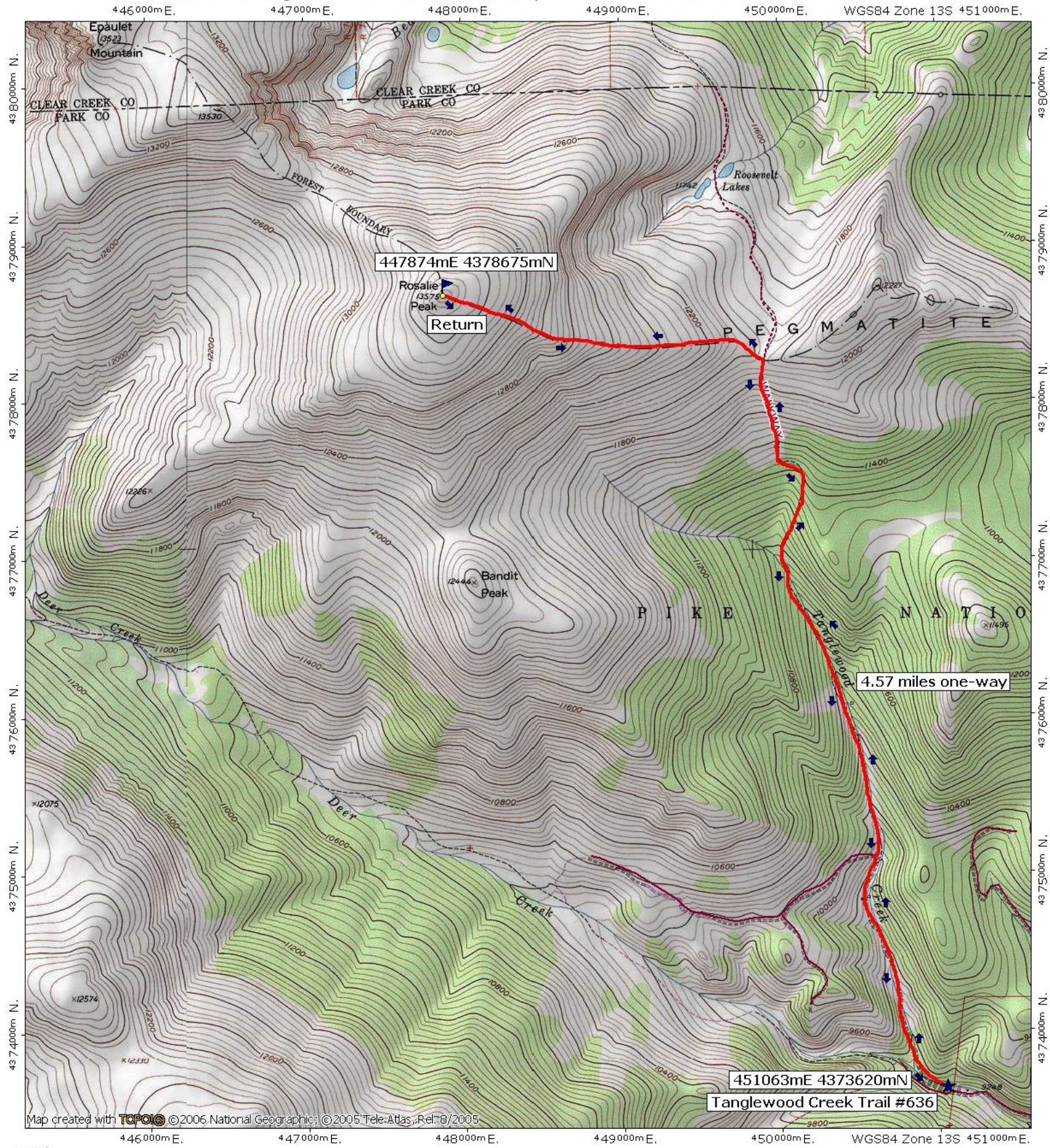
OUTDOOR RECREATION INFORMATION CENTER ■ 1416 Platte Street ■ Denver CO 80202

Ask us. We'll Tell You Where To Go ■ www.oriconline.org ■ Updated: 2-7-2018

Follow us on: ■ [facebook.com/oriccolorado](https://www.facebook.com/oriccolorado) ■ Twitter: @oricbryan



03/28/09"Tanglewood Creek to Rosalie Peak.tpo" 448407mE 4376897mN Zone 13S WGS84



Map created with **Topo!** ©2006 National Geographic; ©2005 TeleAtlas, Rel: 8/2005

