

CHIEF MOUNTAIN

DAY HIKE

FYI: The map on the reverse side is for general orientation, not for navigation.

P.S. Get and give trail updates at www.facebook.com/oriccolorado

Location: Arapaho National Forest
Off Squaw Pass Road
Near Mile Marker 19

Contact Info: Clear Creek Ranger District
303-567-4382
www.fs.fed.us/r2

Length: 1.02 miles one-way (estimate using the Nat'l Geo Mapping Software)

Time: The average person hikes approximately 2 miles an hour. Adjust your time +/- based on terrain and weather conditions and your skill and fitness level and whether you are hiking or trail running. GPS drive time is approximately 50 minutes from the REI Flagship Store-Denver.

Elevation Gain/Loss: See trail profile on reverse side

Difficulty: Easy to moderate

Trail Users: Hikers, dogs and equestrians

Season: May to November

Dogs: Under owner's control

Permits: None required

Getting There From Denver: Take I-70 west to exit 252. Head south on CO Highway 74 (Evergreen Parkway). Turn right onto CO Highway 103 (Squaw Pass Road). Drive 13 miles and park on the right side of road (not an established parking area) just past mile marker 19. You will be able to see the top tow terminal for the Echo Park Ski Area just below you. The trailhead is across the road to the south and goes up steeply for the first few feet past a concrete marker numbered 290.

Maps: National Geographic Trails Illustrated # 104E and or the Idaho Springs USGS 7.5 topographic map. **IMPORTANT:** Stay found with the aid of a topographic map, a compass, a GPS receiver and the skill to use them.

Safety Considerations and Supplemental Info: ■ Parking is limited
■ Afternoon thunderstorms and lightning ■ Check www.oriconline.org for fire restrictions ■ Prepare for mosquitoes from May through September

Trail Description: Take the Chief Mountain Trail #58 all the way to the top. Though you won't need them, rock cairns mark the way to the top. Do not be tricked into turning on to an east-west dirt road you cross soon after you start the trail. Cross over the road and you will see a sign pointing you in the right direction. **TIP:** Contact the Idaho Springs Visitor Center (303-567-4382) for trail updates and conditions.

Highlights: ■ Wonderful views of the peaks of the continental divide ■ Glimpses of the animated Clark's Nutcracker ■ Stately stands of Limber Pine, Englemann Spruce and Lodgepole pine

Visit us in the REI DENVER FLAGSHIP STORE

OUTDOOR RECREATION INFORMATION CENTER ■ 1416 Platte Street ■ Denver CO 80202

Ask us. We'll Tell You Where To Go ■ www.oriconline.org ■ Updated: 2-4-2018

Follow us on: ■ facebook.com/oriccolorado ■ Twitter: @oricbryan

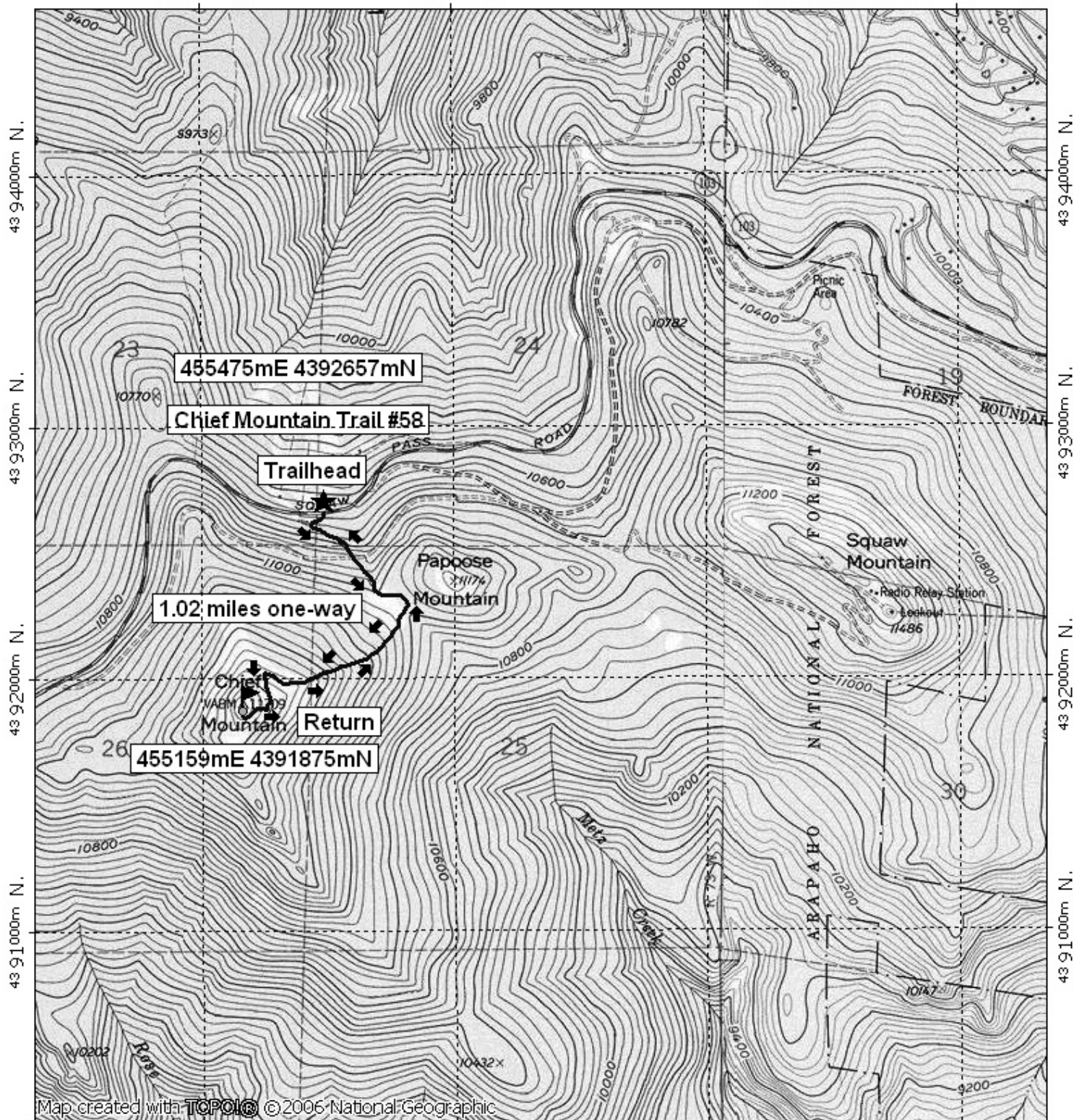


Chief Mountain Trail

455 000m E.

456 000m E.

WGS84 Zone 13S 458 000m E.

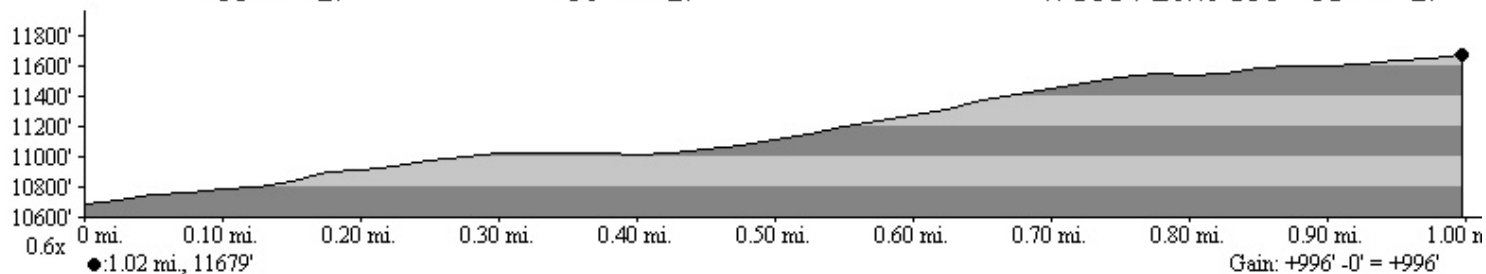


Map created with **TOPOLIC** © 2006 National Geographic

455 000m E.

456 000m E.

WGS84 Zone 13S 458 000m E.



0.0 0.5 1.0 miles
0.0 0.5 1.0 1.5 km

TN MN
9 1/2°
04/18/08