

COLORADO MINES PEAK

DAY HIKE

FYI: The map on the reverse side is for general orientation, not for navigation.

P.S. Get and give trail updates at www.facebook.com/oriccolorado

Location: Arapaho National Forest
Access from Berthoud Pass

Contact Info: Sulphur Ranger District
970-887-4100
www.fs.fed.us/r2

Length: 1.40 miles one-way (estimate using the Nat'l Geo Mapping Software)

Time: The average person hikes approximately 2 miles an hour. Adjust your time +/- based on terrain and weather conditions and your skill and fitness level and whether you are hiking or trail running. GPS drive time is approximately 1 hour from the REI Flagship Store-Denver.

Elevation Gain/Loss: See trail profile on reverse side

Difficulty: Easy (follows a jeep service road all the way)

Trail Users: Cyclists and hikers

Season: Mid July to mid September

Dogs: Under owner's control

Permits: None required

Getting There from Denver: Take I-70 west. Get off at the Empire Exit and take US Highway 40 to Berthoud Pass. Park in the lot on the right. The trail starts at the south end of the parking lot. Follow the gated service road to Colorado Mines Peak.

Maps: National Geographic Trails Illustrated #103W and or the Berthoud Pass USGS topographic map. **IMPORTANT:** Stay found with the aid of a topographic map, a compass, a GPS receiver and the skill to use them.

Safety Concerns and Supplemental Info: ■ This hike is mostly above tree line ■ Afternoon thunderstorms and lightning ■ Start early ■ Check www.oriconline.org for fire restrictions ■ Prepare for mosquitoes from May through September

Trail Description: Hike with 360° views of the surrounding peaks. The hike follows a service road (signed as the Continental Divide Trail, up switchbacks, to timberline. The road first heads South and then switchbacks several times toward the communication towers on the peak's summit. **TIP:** Check with the Sulphur Ranger District for trail updates and snow conditions.

Highlights: ■ Easy access ■ Views of many peaks and mountain ranges
■ Special view of the Colorado high country without much pain

Visit us in the REI DENVER FLAGSHIP STORE

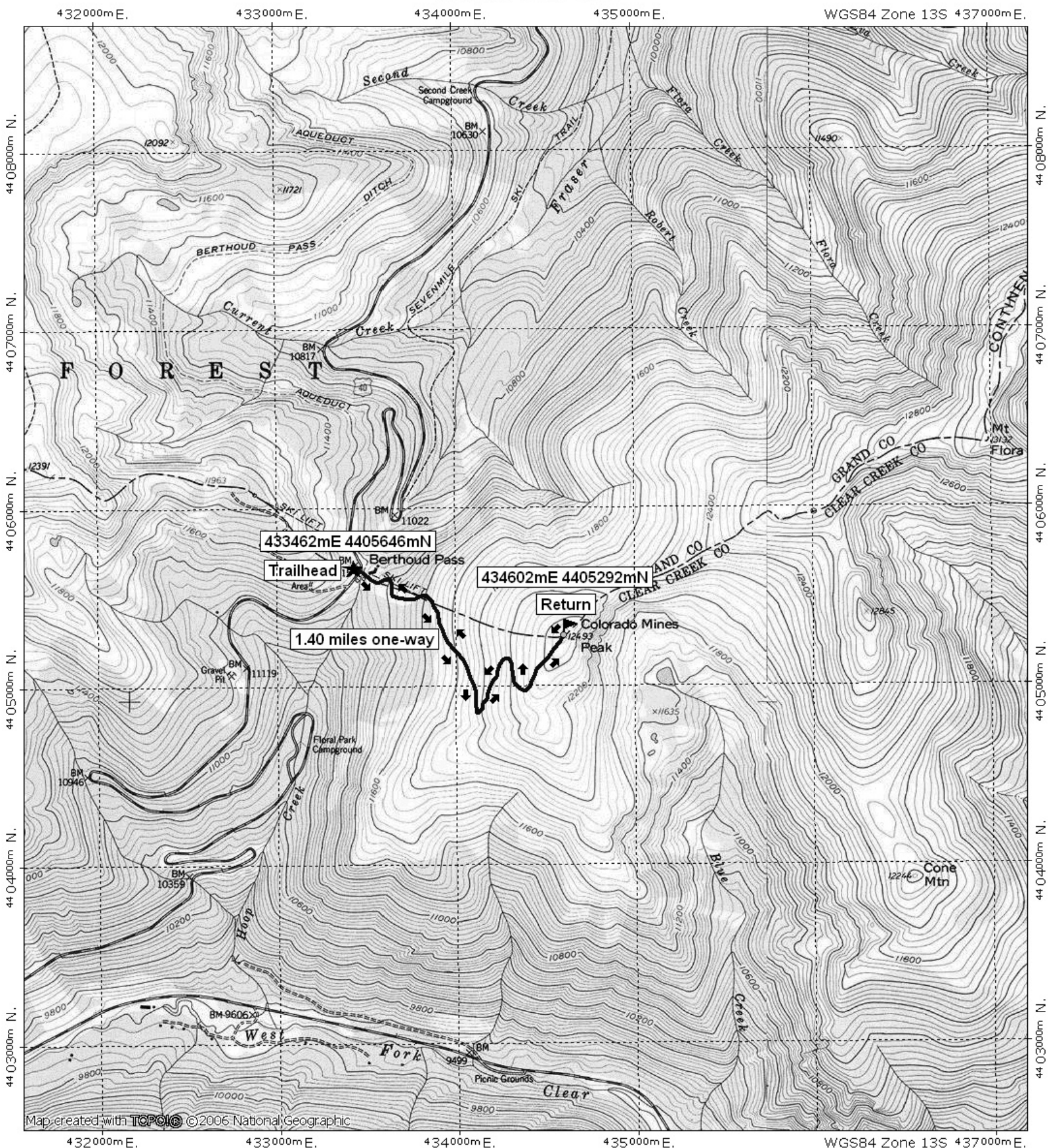
OUTDOOR RECREATION INFORMATION CENTER ■ 1416 Platte Street ■ Denver CO 80202

Ask us. We'll Tell You Where To Go ■ www.oriconline.org ■ Updated: 2-4-2018

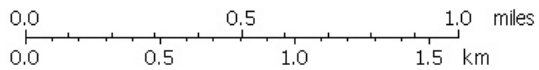
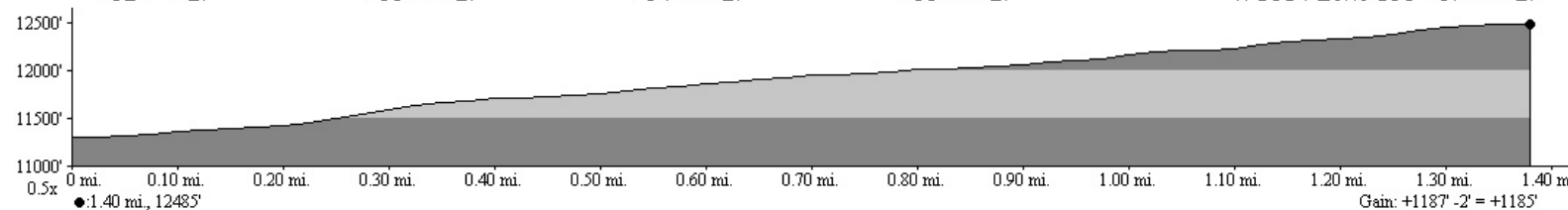
Follow us on: ■ [facebook.com/oriccolorado](https://www.facebook.com/oriccolorado) ■ Twitter: @oricbryan



Colorado Mines Peak



Map created with **TOPOLIO** ©2006 National Geographic



TN MN
9 1/2°
04/18/08