

COLORADO TRAIL @ KENOSHA PASS



WINTER TRAIL

FYI: The map on the reverse side is not intended for navigation, but rather for general orientation.

P.S. More trail maps available at www.oriconline.org

Location: Pike National Forest
Access from Kenosha Pass
Near Kenosha Pass CG

Contact Info: South Park Ranger District
719-836-2031
www.fs.fed.us/r2

Length: 4.26 miles one-way (est. mileage rounded to the nearest ¼ mile)

Time: The average person snowshoes apx. 1 mile an hour, not including breaks. Adjust your time +/- based on terrain, snow conditions, wind, your skill and fitness level and whether you are snowshoeing, skiing or hiking.

Elevation Gain/Loss: +908' -764' = +144'

Difficulty: Easy

Activities: Snowshoeing, skiing and hiking (when there's not enough snow)

Season: December through March (Check www.oriconline.org for snow depths and avalanche conditions)

Pets permitted: On hand-held leash

Permits: None required

Getting There From Denver: Take US Highway 285 for about 58 miles SE of the Denver Area. The Kenosha Pass Campground is on the right. Just past the campground entrance the Colorado Trail is visible from the highway proceeding in a NW direction. Park alongside the highway, not at the campground.

Maps: National Geographic Trails Illustrated # 105 and or Jefferson USGS 7.5 topographic map. **IMPORTANT:** Stay found with the aid of a topographic map, a compass, a GPS receiver and the skill to use them.

Safety Considerations and Supplemental Info: ■ Potential for altitude sickness ■ Plan for shorter days in the Winter months ■ Dress appropriately for winter conditions

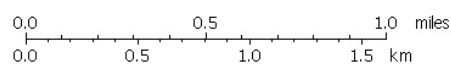
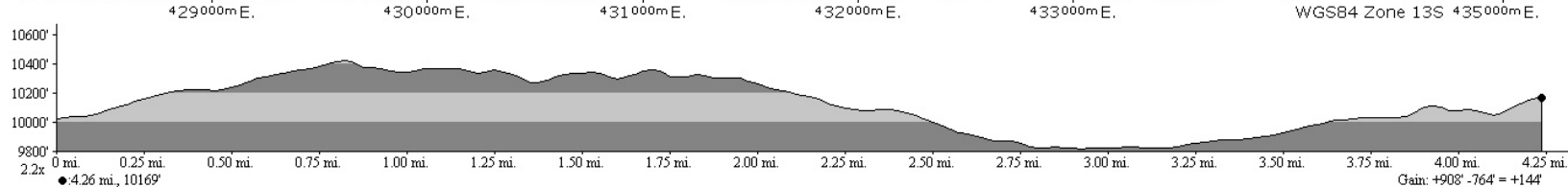
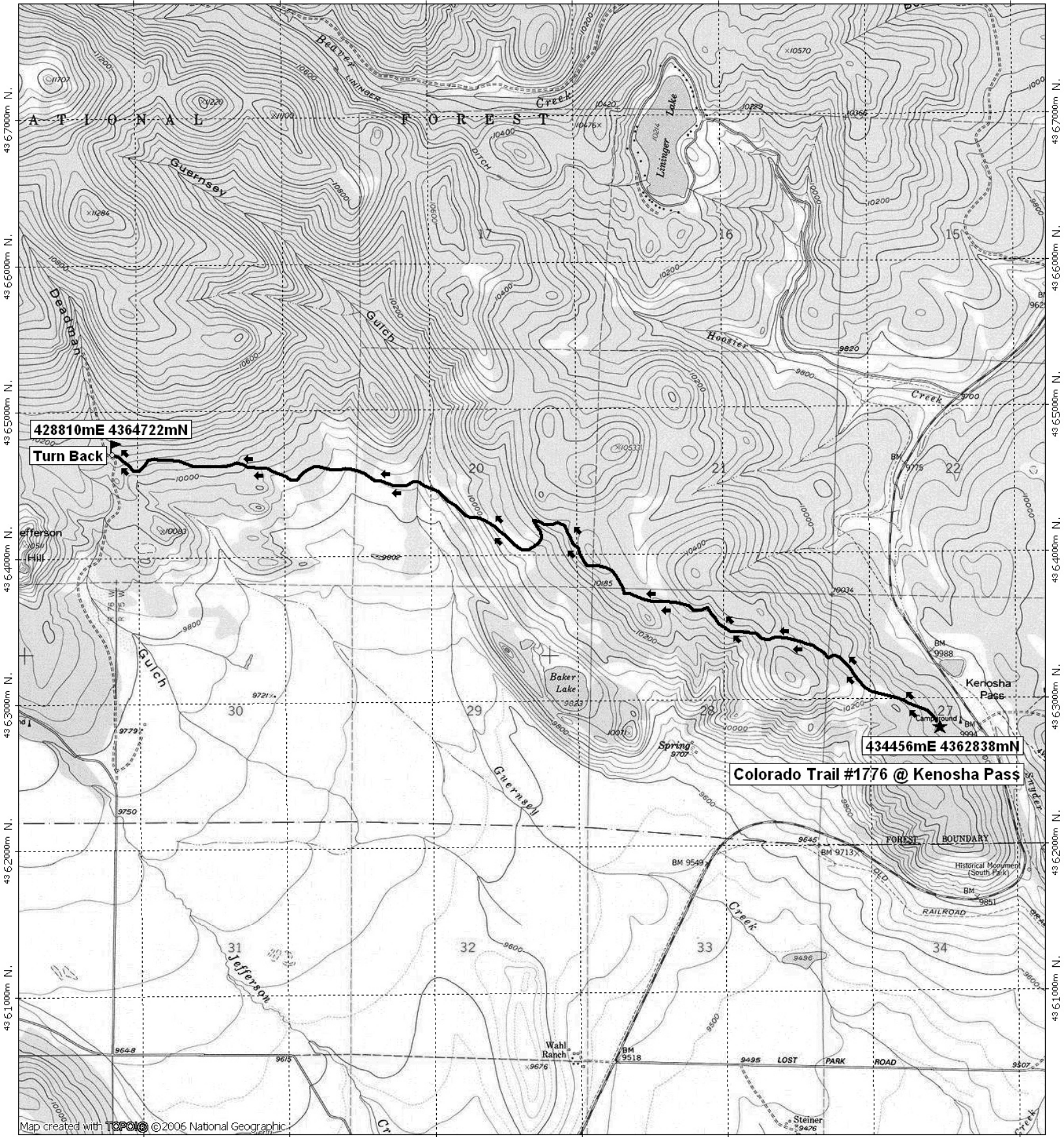
Trail Description: No peak views. There is a register at the beginning of the trail. Pass under a powerline after about ½ mile and onto a forested ridge. Continue until you cross a road and then cross Deadman Creek on a bridge.

TIP: Contact the South Park Ranger District for trail updates and snow conditions.

Highlights: ■ Beautiful views of South Park ■ Trail goes through several outstanding stands of Aspen

Colorado Trail @ Kenosha Pass Winter Trail

429000m E. 430000m E. 431000m E. 432000m E. 433000m E. WGS84 Zone 13S 435000m E.



TN MN
10°
11/07/07