

FYI: The map on the reverse side is not intended for navigation, but rather for general orientation.
P.S. More trail maps available at www.oriconline.org

Location: Arapaho National Forest
 Near Winter Park
 Off U.S. Highway 40

Contact Info: Sulphur Ranger District
 970-887-4100
www.fs.fed.us/r2

Length: +/- 1.03 miles one-way (est. mileage rounded to the nearest ¼ mile)

Time: The average person snowshoes apx. 1 mile an hour, not including breaks. Adjust your time +/- based on terrain, snow conditions, wind speed, your skill and fitness level and whether you are snowshoeing, skiing or hiking.

Elevation Gain/Loss: +84' -199' = -115'

Difficulty: Easy

Activities: Snowshoeing, skiing and hiking (when there's not enough snow)

Season: December through March (Check www.oriconline.org for snow depths and avalanche conditions)

Dogs permitted: Under owner's control

Permits: None

Getting There from Denver: Take I-70 west to Exit 232 near Empire. Get off on this exit and take US Highway 40 West and then North towards Winter Park. Look for a sign labeled "Town of Winter Park Public Works" near Mile Marker 231 on the south side of the highway. Turn into the driveway and immediately turn right into the parking area.

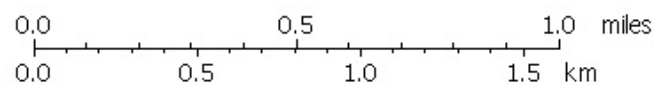
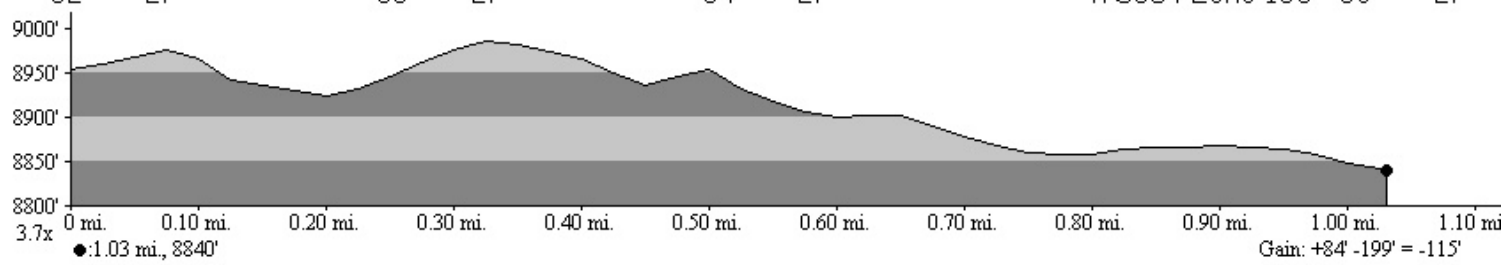
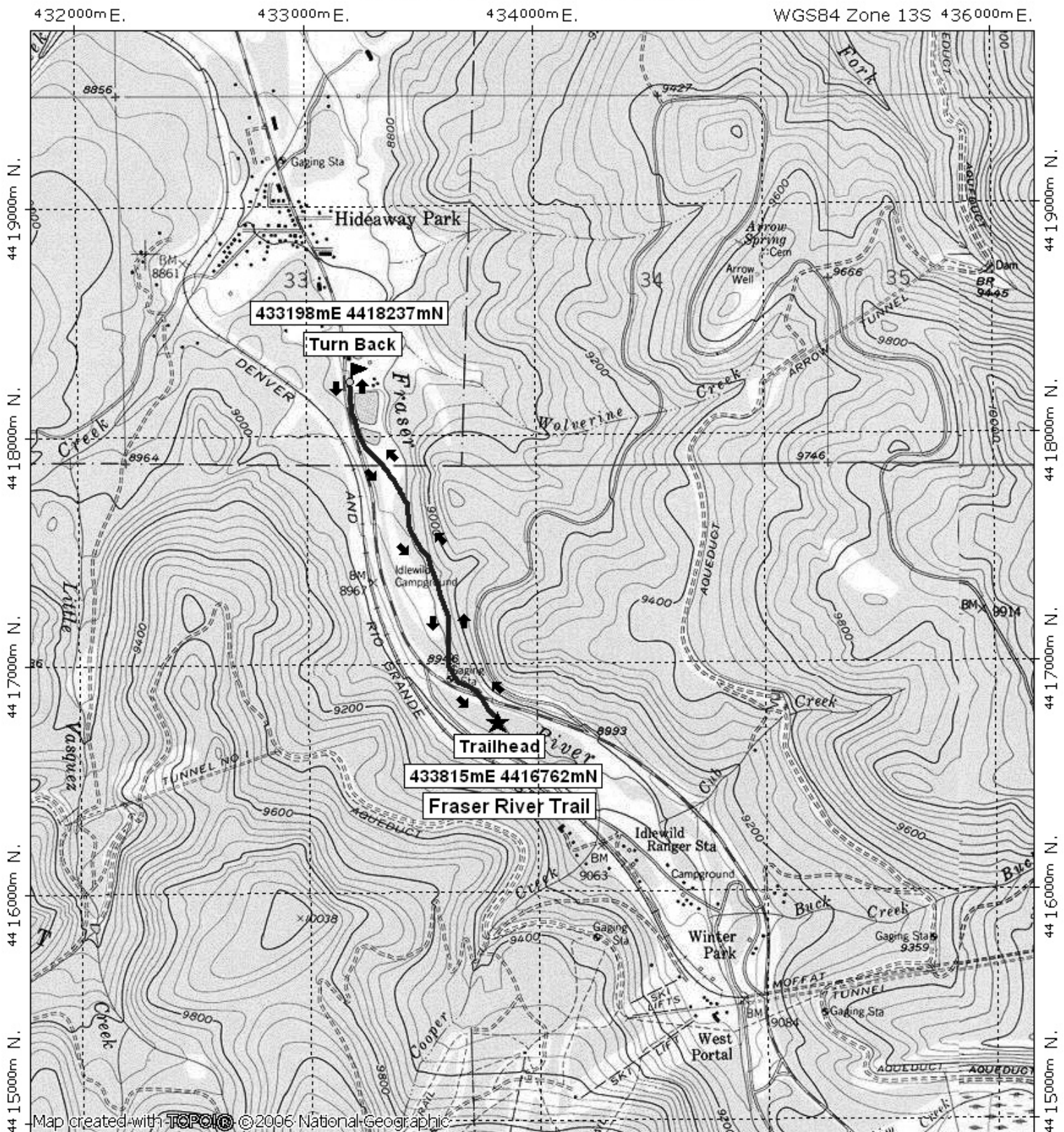
Maps: National Geographic Trails Illustrated # 103. **IMPORTANT:** Stay found with the aid of a topographic map, a compass, a GPS receiver and the skill to use them.

Safety Concerns and Supplemental Info: ■ Dress appropriately for winter conditions ■ Plan for shorter days in the Winter months

The Trail: This a popular bike trail in the summer and is well identified with signs. Cross under US Highway 40 through a tunnel. Travel north through the Idlewild Campground and continue paralleling US 40 to the far end of a large pond. Return the way you came. **TIP:** Contact the Sulphur Ranger District for trail updates and snow conditions.

Highlights: ■ Possibility of seeing moose in the willow thickets ■ Views of the Continental Divide ■ Proximity to the Fraser River ■ Good beginner trail

Fraser River Winter Trail Final



TN ↑ MN
10°
11/02/07