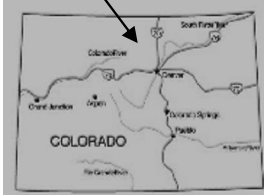


GREEN MOUNTAIN TO BIG MEADOWS



WINTER TRAIL

FYI: The map on the reverse side is not intended for navigation, but rather for general orientation.

P.S. More trail maps available at www.oriconline.org

Location: Rocky Mountain Nat'l Park
Westside of Park
Grand Lake Entrance

Contact Info: Kawuneeche Visitor Ctr
970-627-3471
www.nps.gov

Length: 1.78 miles one-way (est. mileage rounded to the nearest ¼ mile)

Time: The average person snowshoes apx. 1 mile an hour, not including breaks. Adjust your time +/- based on terrain, snow conditions, wind speed, your skill and fitness level and whether you are snowshoeing, skiing or hiking.

Elevation Gain/Loss: +674' -60' = +614'

Difficulty: Moderate

Activities: Snowshoeing, skiing and hiking (when there's not enough snow)

Season: December through March (Check www.oriconline.org for snow depths and avalanche conditions)

Dogs permitted: Under owner's control

Permits: National Parks Pass or Individual & Family Entrance Fees

Getting There from Denver: Take I-70 west to Exit 232 near Empire. Get off on exit 232 and take US Highway 40 to Granby. Continue past Granby and turn right on US Highway 34. Continue North on US Highway 34 to the Grand Lake Entrance to Rocky Mountain National Park. From the entrance fee station continue 2.6 miles to the Green Mountain trailhead and parking area on your right.

Maps: National Geographic Trails Illustrated # 200S Rocky Mountain National Park. ■ **IMPORTANT:** Stay found with the aid of a topographic map, a compass, a GPS receiver and the skill to use them.

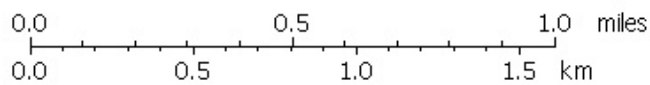
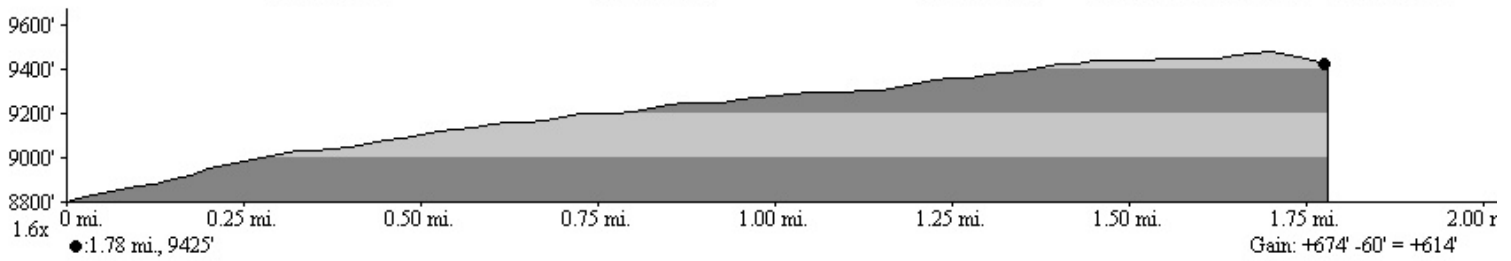
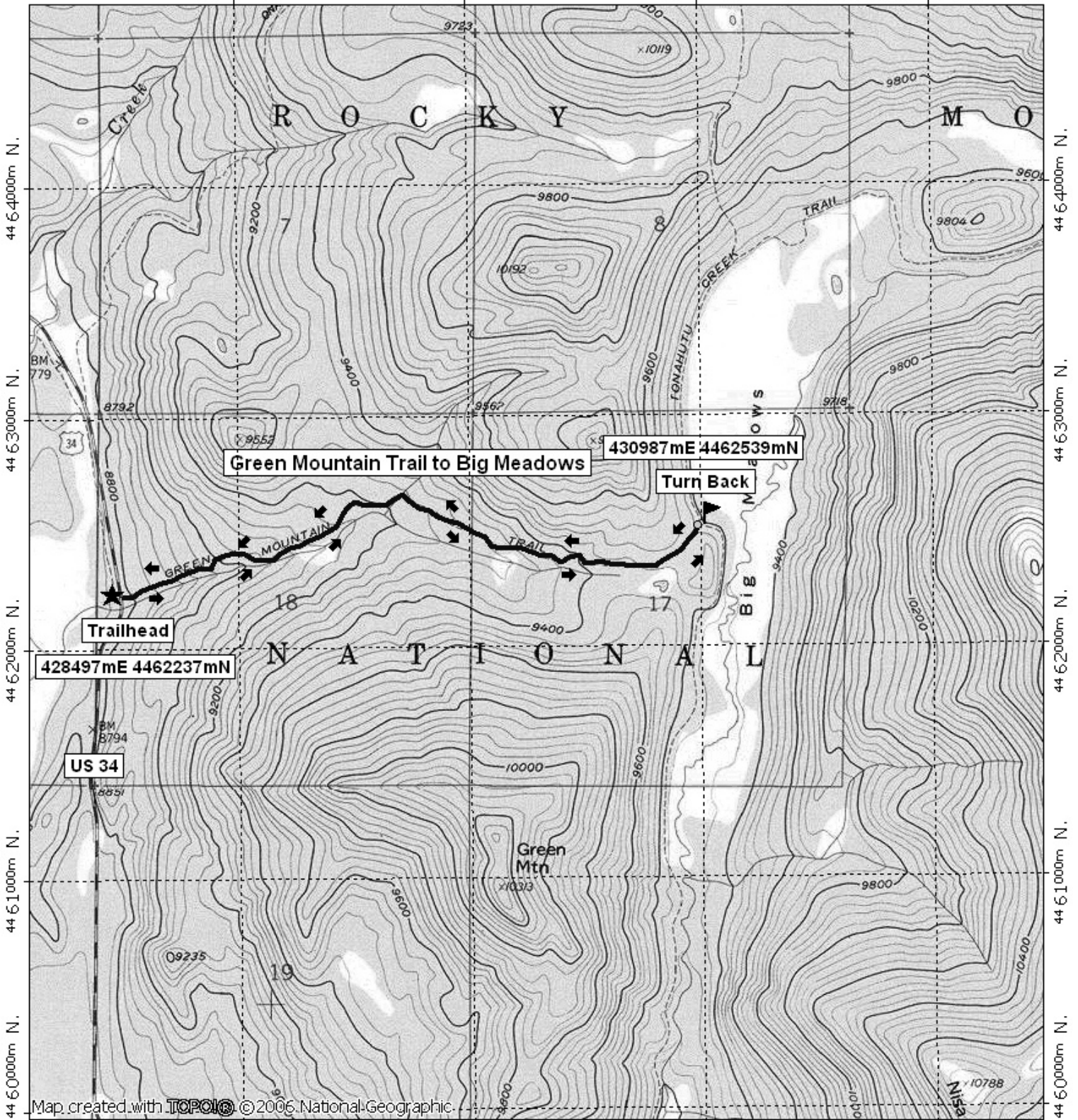
Safety Concerns and Supplemental Info: ■ Dress appropriately for winter conditions ■ Plan for shorter days in the Winter months

The Trail: From the kiosk at the trail head east into the woods toward Big Meadows. The trail is well identified with orange markers. Climb steadily through the trees and cross several small bridges. Continue to the Tonahutu Creek trail crossing. Head left to a hitch rack. Return the way you came. **TIP:** Contact the Kawuneeche Visitor Center for trail updates and snow conditions.

Highlights: ■ From the hitch rack, the view across Big Meadows is beautiful
■ Wildlife viewing opportunities ■ Meadow surrounded by forest ■ Views of Green Mountain and an assortment of snow capped peaks

Green Mountain to Big Meadows Trail Final

429000m E. 430000m E. 431000m E. WGS84 Zone 13T 432000m E.



TN ↑ MN
10°
11/02/07