

# GRIZZLY GULCH

# WINTER TRAIL



**FYI:** The map on the reverse side is for general orientation, not for navigation.  
**P.S.** Give and get snow and trail updates at [www.facebook.com/oriccolorado](http://www.facebook.com/oriccolorado)

**Location:** Arapaho National Forest  
 At the base of Torreys Peak  
 Bakerville Exit 221

**Contact Info:** Clear Creek Ranger District  
 303-567-4382  
[www.fs.fed.us/r2](http://www.fs.fed.us/r2)

**Length:** 2.25 miles one-way (est. mileage rounded to the nearest ¼ mile)

**Time:** The average person snowshoes apx.1 mile an hour. Adjust your time +/- based on terrain, snow conditions, wind speed, your skill and fitness levels and whether you are snowshoeing, skiing or hiking.

**Elevation Gain/Loss:** See trail profile on reverse side

**Difficulty:** Moderate

**Activities:** Snowshoeing, skiing and hiking (when there's not enough snow)

**Season:** Late December through March (Check [www.oriconline.org](http://www.oriconline.org) for snow depths and avalanche conditions)

**Dogs permitted:** Under owner's control

**Permits:** None

**From Denver:** Take I-70 west to the Bakerville Exit # 221. Take this Exit to the parking area. The parking area is on the town site known as Bakerville. The only thing left of this ghost town is a chimney, four abandoned houses, a garage and perhaps the ghosts.

**Maps:** National Geographic Trails Illustrated Map # 104W. **IMPORTANT:** Stay found with the aid of a topographic map, a compass, a GPS receiver and the skill to use them.

**Safety Concerns and Supplemental Info:** ■ Dress appropriately for winter conditions ■ There are several avalanche run out zones further down the trail so be careful ■ Plan for shorter days in this season

**Trail Description:** Start your adventure on County Road 321. This road travels south and doubles as a trail in the winter. After about 1 mile the trail splits. Take the right fork about 200 yards to some unoccupied mine buildings and inactive mines. Cross a stream and the trail briefly climbs a steep hill with a house at the top of the hill. From here the trail continues up the valley through forest and meadows until you approach timberline at about 10,640 feet. Return the way you came.

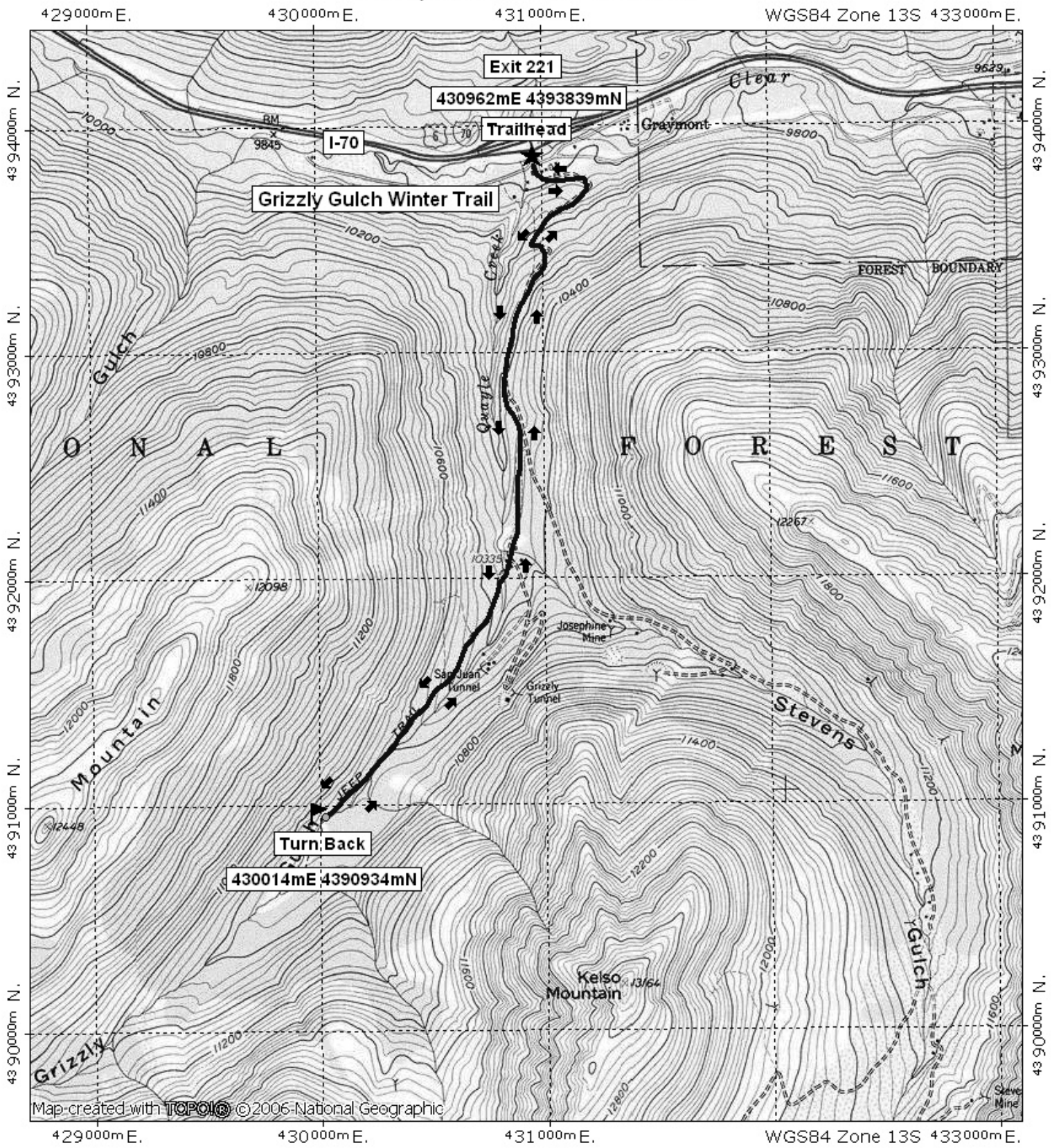
**TIP:** Contact the Clear Creek Ranger District for trail updates and conditions.

**Highlights:** ■ Beautiful views of high peaks ■ Everestesque view of the North Ridge of Torreys Peak

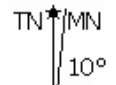
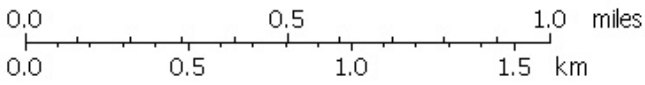
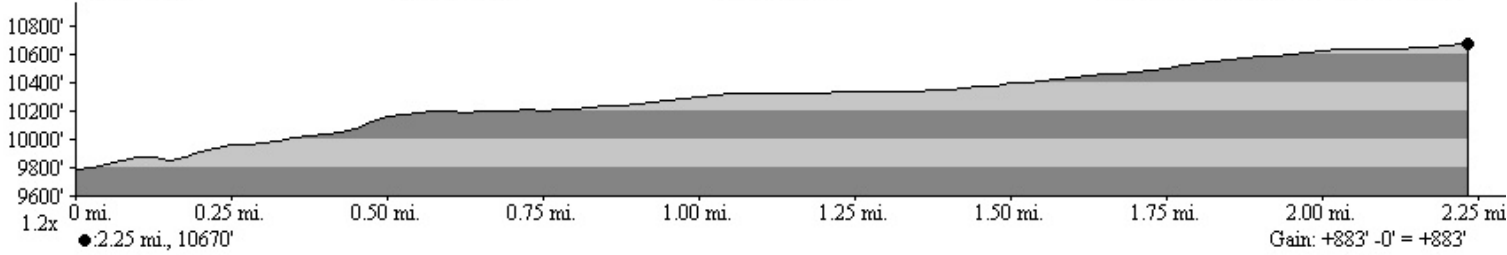
Visit us in the REI DENVER FLAGSHIP STORE  
**OUTDOOR RECREATION INFORMATION CENTER** ■ 1416 Platte Street ■ Denver CO 80202  
 Ask us. We'll Tell You Where To Go ■ [www.oriconline.org](http://www.oriconline.org) ■ Updated: 2-3-2018  
 Follow us on: ■ [facebook.com/oriccolorado](http://facebook.com/oriccolorado) ■ Twitter: @oricbryan



# Grizzly Gulch Winter Trail Final



Map created with **TOPOLIC** © 2006 National Geographic



11/02/07