

## HERMAN GULCH



## WINTER TRAIL

**FYI:** The map on the reverse side is not intended for navigation, but rather for general orientation.

**P.S.** More trail maps available at [www.oriconline.org](http://www.oriconline.org)

**Location:** Arapaho National Forest  
East of Eisenhower Tunnel  
Exit 218 to Herman Gulch TH

**Contact Info:** Clear Creek Ranger District  
303-567-3000  
[www.fs.fed.us/r2](http://www.fs.fed.us/r2)

**Length:** 2.23 miles one-way (est. mileage rounded to the nearest ¼ mile)

**Time:** The average person snowshoes apx. 1 mile an hour, not including breaks. Adjust your time +/- based on terrain, snow conditions, wind speed, your skill and fitness level and whether you are snowshoeing, skiing or hiking.

**Elevation Gain/Loss:** +992' -2' = +990' (if you do the entire trip)

**Difficulty:** Moderate to difficult

**Activities:** Snowshoeing, skiing and hiking (when there's not enough snow)

**Season:** December through March (Check [www.oriconline.org](http://www.oriconline.org) for snow depths and avalanche conditions)

**Dogs permitted:** Under owner's control

**Permits:** None

**Getting There From Denver:** Take I-70 west to Exit 218. Get off at this exit and then turn right onto Forest Service Road 98. This road will lead to the parking area, trailhead and restrooms.

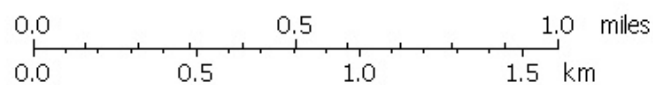
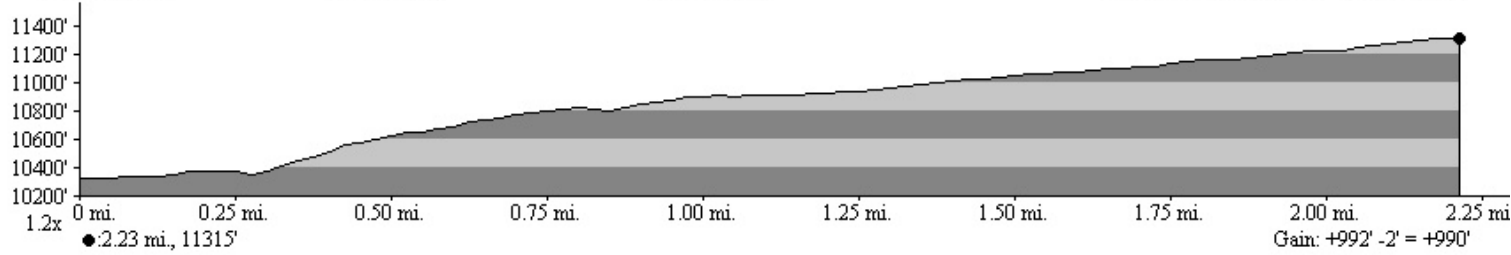
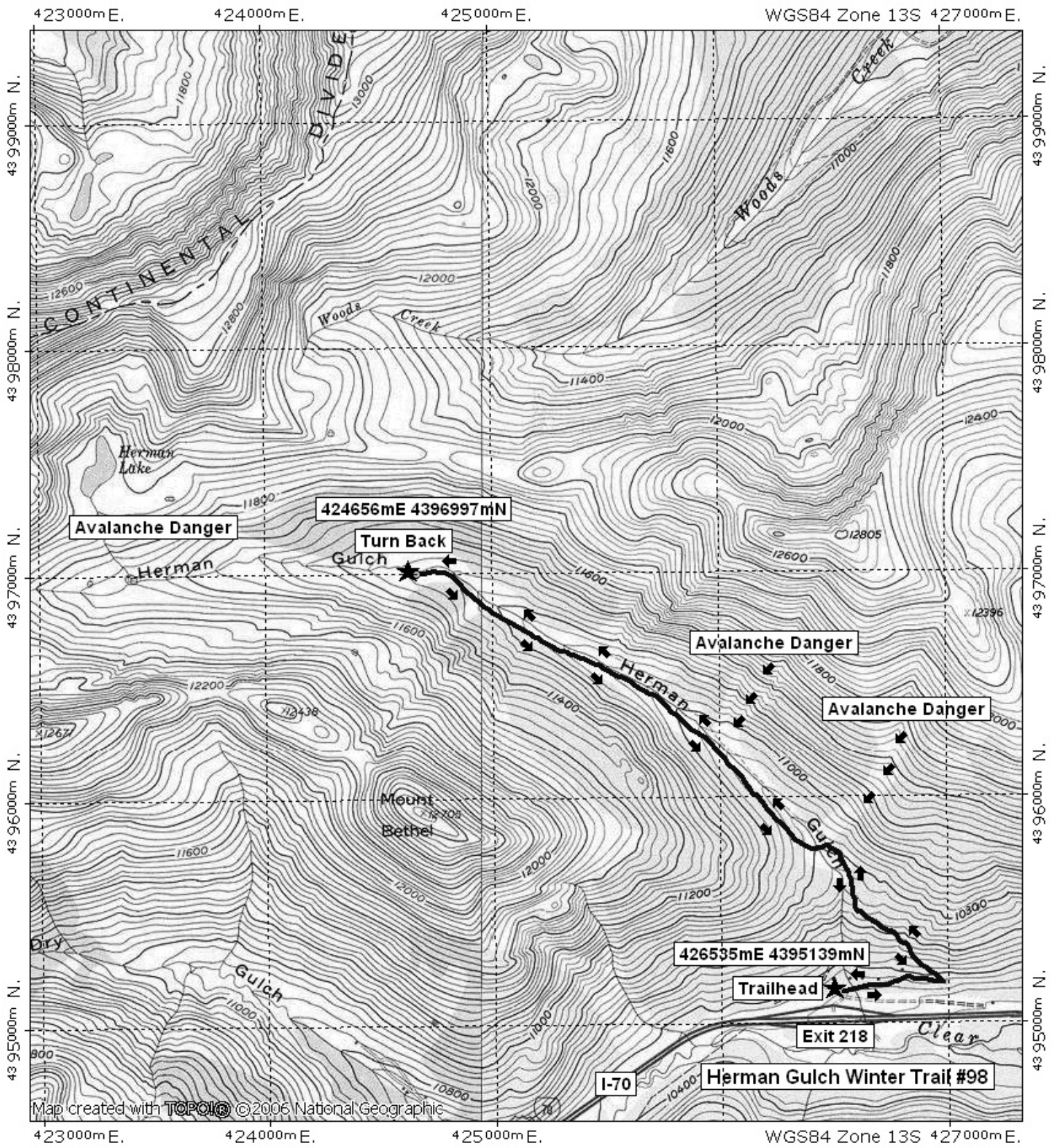
**Maps:** NG Trails Illustrated #104W **IMPORTANT:** Stay found with the aid of a topographic map, a compass, a GPS receiver and the skill to use them.

**Safety Concerns and Supplemental Info:** ■ This is a very popular, heavily used trail ■ Plan for shorter days in the Winter months ■ As you progress up this valley be very cautious when crossing **2 AVALANCHE PATHS** on your right

**Trail Description:** Herman Gulch Trail # 98 splits after about 75 yards. Take the left fork and follow the Winter Trail. The trail climbs at a fairly continuous, **STEEP PITCH** for .4 mile. This is the toughest part of the trip, but do not be discouraged. After the slope eases, you emerge in a wooded, high valley. As you progress up this valley be very cautious when crossing **2 AVALANCHE PATHS** on your right. As the trail progresses, it bends to the left and the upper reaches of this valley come into view. This is the end of this trip. Do not venture above timberline to the basin at the head of this valley. It is very avalanche prone. Return the way you came. If you are on skis be cautious, when descending the lower, steep .4 mile pitch toward the bottom. Stay in control. **TIP:** Contact the Clear Creek Ranger District for trail updates and snow conditions.

**Highlights:** ■ Great views of the upper valley and high peaks ■ Nearby creek  
■ Traveling through a winter forest and meadows

# Herman Gulch Winter Trail Final



TN ↑ MN  
10°  
11/02/07