

## MONARCH LAKE



## WINTER TRAIL

**FYI:** The map on the reverse side is not intended for navigation, but rather for general orientation.

**P.S.** More trail maps available at [www.oriconline.org](http://www.oriconline.org)

**Location:** Arapaho Nat'l Rec Area  
Northwest of Granby  
East end of Lake Granby

**Contact Info:** Sulphur Ranger District  
970-887-4100  
[www.fs.fed.us/r2](http://www.fs.fed.us/r2)

**Length:** 5.52 mile loop (est. mileage rounded to the nearest ¼ mile)

**Time:** The average person snowshoes apx. 1 mile an hour, not including breaks. Adjust your time +/- based on terrain, snow conditions, wind speed, your skill and fitness level and whether you are snowshoeing, skiing or hiking.

**Elevation Gain/Loss:** +354' -354' = 0' (many ascents and descents)

**Difficulty:** Moderate

**Activities:** Snowshoeing and skiing (snowmobiling is prohibited)

**Season:** December through March (Check [www.oriconline.org](http://www.oriconline.org) for snow depths and avalanche conditions)

**Dogs permitted:** On leash

**Permits:** Entrance fee required to enter the Arapaho National Recreation Area. Remit payment at self-service pay stations.

**Getting There From Denver:** I-70 West to Exit 234 . Get off at this Exit and take US Highway 40 west to Granby. From Granby go West on US 34 5.4 miles and turn right onto unpaved Grand County Rd # 6. Follow this road 8.6 miles along the south shore of Lake Granby and park at the Arapaho Bay Campground entrance

**Maps:** National Geographic Trails Illustrated # 102W and or Monarch Lake USGS 7.5 topographic map. **IMPORTANT:** Stay found with the aid of a topographic map, a compass, a GPS receiver and the skill to use them.

**Safety Concerns and Supplemental Info:** ■ Dress appropriately for winter conditions ■ Plan for shorter days in the Winter months

**Trail Description:** This loop comprises of Forest Development Trails 1, 6.1 and 6. Make your way around a Winter closure gate and hike apx. ¾ of a mile up the road to the large Monarch Lake summer parking lot. Pass a seasonal ranger cabin on your right. You can go around the lake either clockwise (straight ahead) or counter clockwise(to the right and across a dam). **TIP:** Contact the Sulphur Ranger District for trail updates and snow conditions.

**Highlights:** ■ You will be in view of Monarch Lake for most of this trip. ■ At the east end of the lake you will have good views of the high peaks of the Indian Peaks Wilderness ■ Pristine forest ■ Historic cabins ■ Chance of seeing moose feasting on the nearby willows

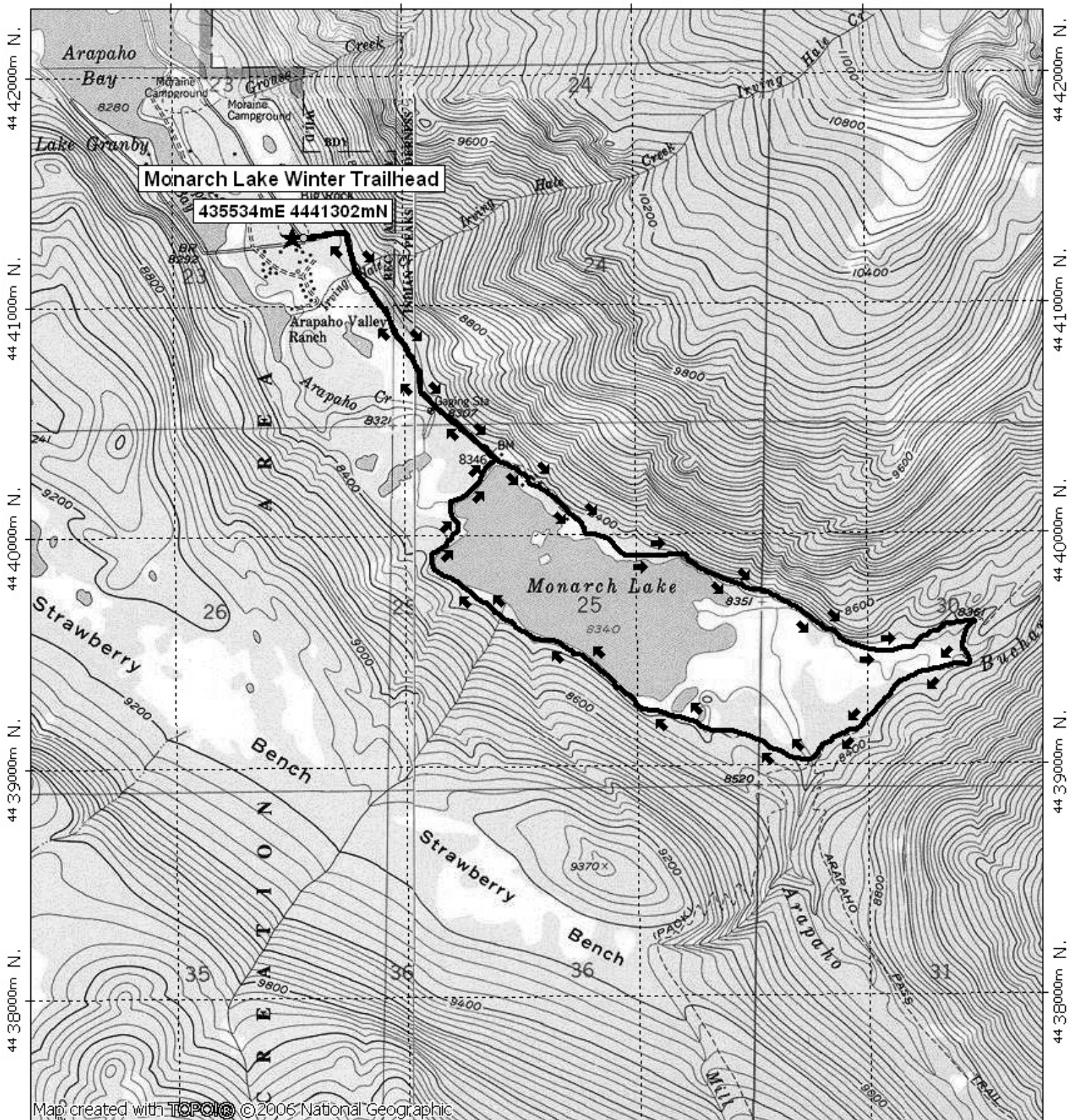
# Monarch Lake Winter Trail

435000m E.

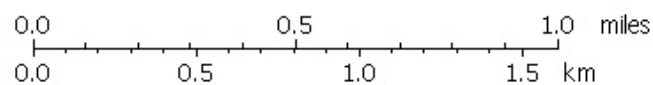
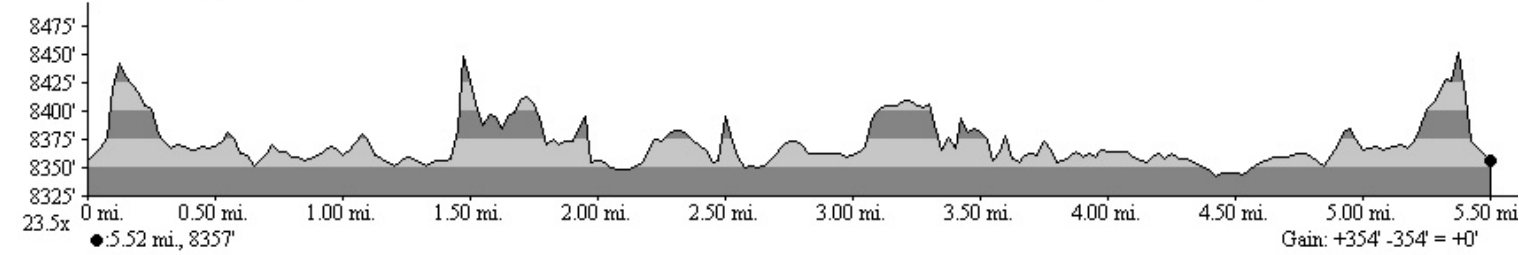
436000m E.

437000m E.

WGS84 Zone 13T 438000m E.



435000m E. 436000m E. 437000m E. WGS84 Zone 13T 438000m E.



TN ↑ MN  
10°  
11/07/07