

# BAKERVILLE TO LOVELAND (BLT)



## WINTER TRAIL

**FYI:** The map on the reverse side is not intended for navigation, but rather for general orientation.

**P.S.** More trail maps available at [www.oriconline.org](http://www.oriconline.org)

**Location:** Arapaho National Forest  
Bakerville Exit 221

**Contact Info:** Clear Creek Ranger District  
303-567-3000  
[www.fs.fed.us/r2](http://www.fs.fed.us/r2)

**Length:** 4.95 miles one-way (est. mileage rounded to the nearest ¼ mile)

**Time:** The average person snowshoes apx. 1 mile an hour. Adjust your time +/- based on terrain, snow conditions, wind speed, your skill and fitness level and whether you are snowshoeing, skiing or hiking.

**Elevation Gain/Loss:** +853' -0' = 853'

**Difficulty:** Easy

**Activities:** Snowshoeing, skiing and hiking (when there's not enough snow)

**Season:** December through March (Check [www.oriconline.org](http://www.oriconline.org) for snow depths and avalanche conditions)

**Dogs permitted:** On a hand-held leash not longer than 6 feet

**Permits:** None

**Getting There From Denver:** Go west on I-70 to Bakerville (Exit 221). Exit here and park. The Bakerville to Loveland Trail # is to the right of the parking area.

**Maps:** NG Trails Illustrated Map #104W. **IMPORTANT:** Stay found with the aid of a topographic map, a compass, a GPS receiver and the skill to use them.

**Safety Concerns and Supplemental Info:** ■ Parallels I-70, but never too close to the highway. The area is forested and I-70 is not often visible ■ Dress appropriately for winter conditions ■ Potential **AVALANCHE DANGER** if you venture north of the highway onto the Herman Gulch Trail #98. It is important to stay on the winter portion of this trail ■ Plan for shorter days in the Winter months

**Trail Description:** The BLT parallels I-70 and Clear Creek. The trail gently ascends from Bakerville to Loveland. Nice mountain views from all sides. You can shorten this trip and maximize its potential by making it a one-way trip from Loveland Valley (Exit 216) to Bakerville (Exit #221). If you choose this option leave a car at Bakerville (Exit 221) and drive to Loveland Valley (Exit 216) to start the trip. The trailhead is apx. 100 yards from the East Parking Lot. The route to the trailhead starts at the "Road Closed" sign on the eastside of the parking lot. Or you could start at either Loveland Valley or Bakerville, go as far as you like on the trail, and then turn around and head back to your car. **TIP:** Contact the Clear Creek Ranger District for trail updates and snow conditions.

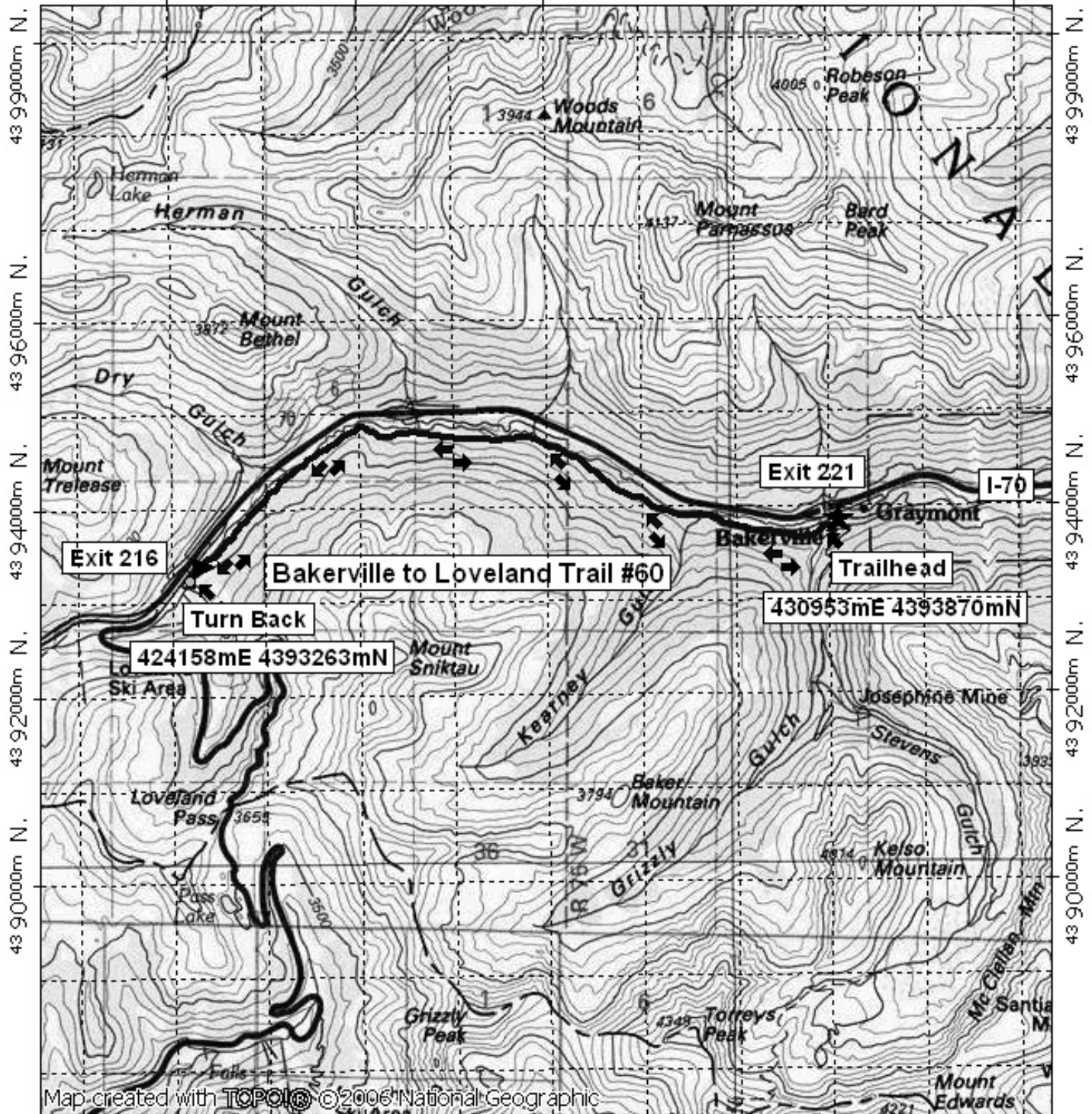
**Highlights:** ■ Proximity to the frozen waters of Clear Creek ■ Views of Gray's and Torrey's Peaks ■ Well marked trail ■ Gentle grades ■ Good beginner trail

OUTDOOR RECREATION INFORMATION CENTER ■ 1416 Platte Street ■ Denver CO 80202

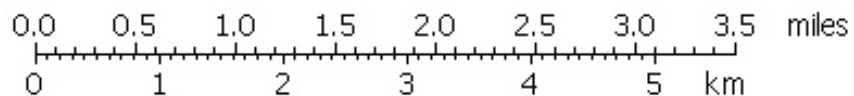
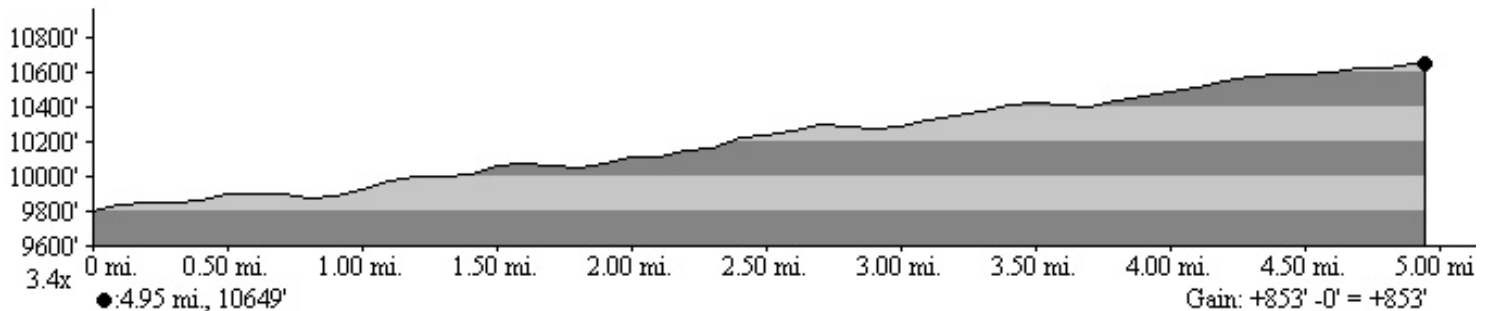
Ask us. We'll Tell You Where To Go ■ [www.oriconline.org](http://www.oriconline.org) ■ Updated: 10-22-2009

# Bakerville to Loveland Winter Trail Final

424000m E, 426000m E, 428000m E, WGS84 Zone 13S 433000m E.



424000m E, 426000m E, 428000m E, WGS84 Zone 13S 433000m E.



TN ↑ MN  
10°  
10/27/07