

PAVILION POINT

WINTER TRAIL

FYI: The map on the reverse side is for general orientation, not for navigation.
P.S. Give and get snow and trail updates at www.facebook.com/oriccolorado

Location: Arapaho National Forest
 Off I-70 near Silverplume
 South of Georgetown

Contact Info: Clear Creek Ranger District
 303-567-4382
www.fs.fed.us/r2

Length: 2.46 miles one-way (est. mileage rounded to the nearest ¼ mile)

Time: The average person snowshoes apx.1 mile an hour. Adjust your time +/- based on terrain, snow conditions, wind speed, your skill and fitness level and whether you are snowshoeing, skiing or hiking.

Elevation Gain/Loss: See trail profile on reverse side

Difficulty: Easy to moderate

Activities: Snowshoeing, skiing and hiking (when there's not enough snow)

Season: December through March (Check www.oriconline.org for snow depths and avalanche conditions)

Dogs permitted: Under owner's control

Permits: None

From Denver: Take I-70 west to Silverplume. Get off I-70 at Exit 226.

Maps: National Geographic Trails Illustrated Map # 104E and Georgetown USGS 7.5 topographic map. **IMPORTANT:** Stay found with the aid of a topographic map, a compass, a GPS receiver and the skill to use them.

Safety Concerns and Supplemental Info: ■ Some old mines; caution around mine shafts, old mining structures and buildings ■ Dress appropriately for winter conditions
 ■ Plan for shorter days in the Winter months ■ Plan for shorter days in this season

Trail Description: Part of this trip is on an old railroad bed. The trail (road) begins on the South side of I-70 just west of the Narrow Gage Railroad station. The road continues about 1 ¾ miles before changing to a trail.

TIP: Contact the Clear Creek Ranger District for trail updates and snow condition.

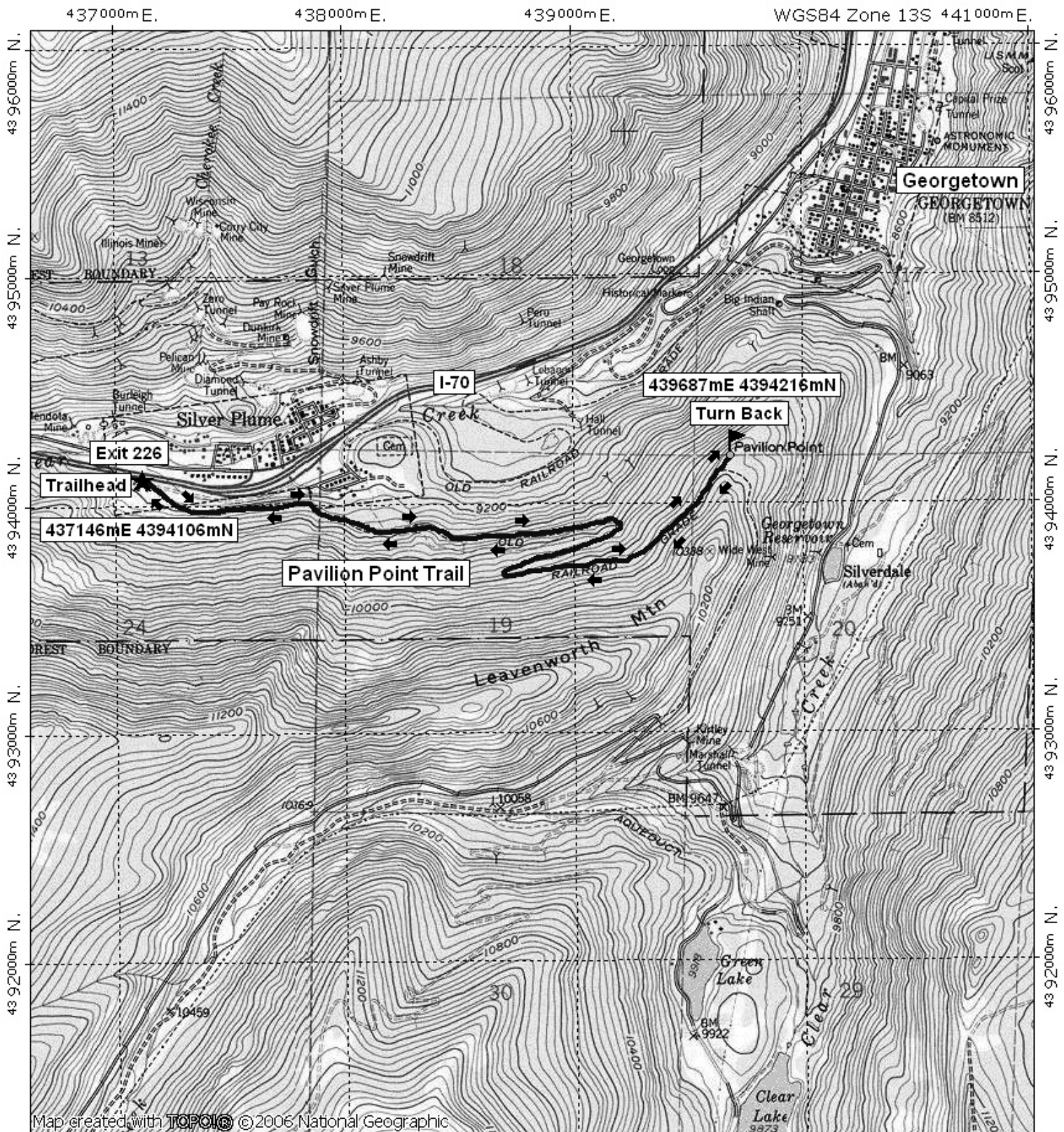
Highlights: Many old mines and mining structures to explore. The large chimney is all that remains of a historic pavilion overlooking Georgetown and surrounding valleys. This pavilion was a favorite destination for day trips during the late 19th and early 20th centuries.

© 2007 ORIC All rights reserved.

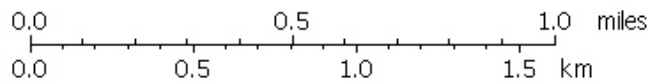
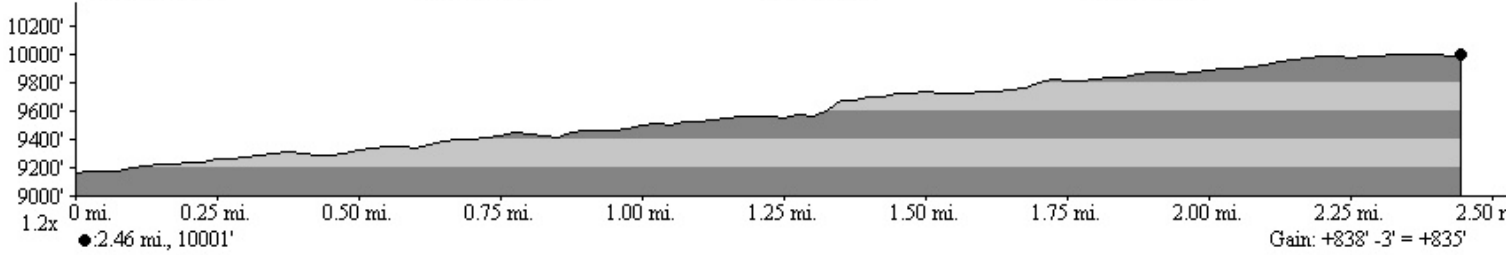
Visit us in the REI DENVER FLAGSHIP STORE
OUTDOOR RECREATION INFORMATION CENTER ■ 1416 Platte Street ■ Denver CO 80202
 Ask us. We'll Tell You Where To Go ■ www.oriconline.org ■ Updated: 2-3-2018
 Follow us on: ■ facebook.com/oriccolorado ■ Twitter: @oricbryan



Pavillion Point Winter Trail Final



Map created with **TOPOLIC** © 2006 National Geographic



TN MN
9 1/2°
11/02/07