

RESTHOUSE MEADOWS



WINTER TRAIL

FYI: The map on the reverse side is for general orientation, not for navigation.
P.S. Give and get snow and trail updates at www.facebook.com/oriccolorado

Location: Mt. Evans Wilderness
Arapaho National Forest
Near Echo Lake

Contact Info: Clear Creek Ranger District
303-567-4382
www.fs.fed.us/r2

Length: 2.72 miles one-way (est. mileage rounded to the nearest ¼ mile)

Time: The average person snowshoes apx.1 mile an hour. Adjust your time +/- based on terrain, snow conditions, wind speed, your skill and fitness levels and whether you are snowshoeing, skiing or hiking.

Elevation Gain/Loss: See trail profile on reverse side

Difficulty: Easy to moderate (depends upon how far you go)

Activities: Snowshoeing, skiing and hiking (when there's not enough snow)

Season: December through March (Check www.oriconline.org for snow depths and avalanche conditions)

Dogs permitted: On leash

Permits: None

From Denver: Take I-70 west. Then take CO Highway 103 south to Echo Lake. Trailhead starts near the junction of CO Highway 103 and CO Highway 5 (Mt Evans road) near the restrooms at the Echo Lake campground.

Maps: National Geographic Trails Illustrated Map #104E and or Harris Park and Idaho Springs USGS 7.5 topographic maps. **IMPORTANT:** Stay found with the aid of a topographic map, a compass, a GPS receiver and the skill to use them.

Safety Concerns and Supplemental Info: ■ **REMEMBER**, you will have to travel up hill about 300 vertical feet on the way out, before you descend the last mile to the trailhead ■ Dress appropriately for winter conditions ■ Plan for shorter days in this season

Trail Description: The first mile climbs gradually through the trees, and then drops into the Vance Creek drainage and two stream crossings. Return the way you came.

TIP: Contact the Clear Creek Ranger District for trail updates and snow conditions.

Highlights: ■ Beautiful views of the slopes of Mt Evans to the west.

Visit us in the REI DENVER FLAGSHIP STORE
OUTDOOR RECREATION INFORMATION CENTER ■ 1416 Platte Street ■ Denver CO 80202
Ask us. We'll Tell You Where To Go ■ www.oriconline.org ■ Updated: 2-3-2018
Follow us on: ■ facebook.com/oriccolorado ■ Twitter: @oricbryan



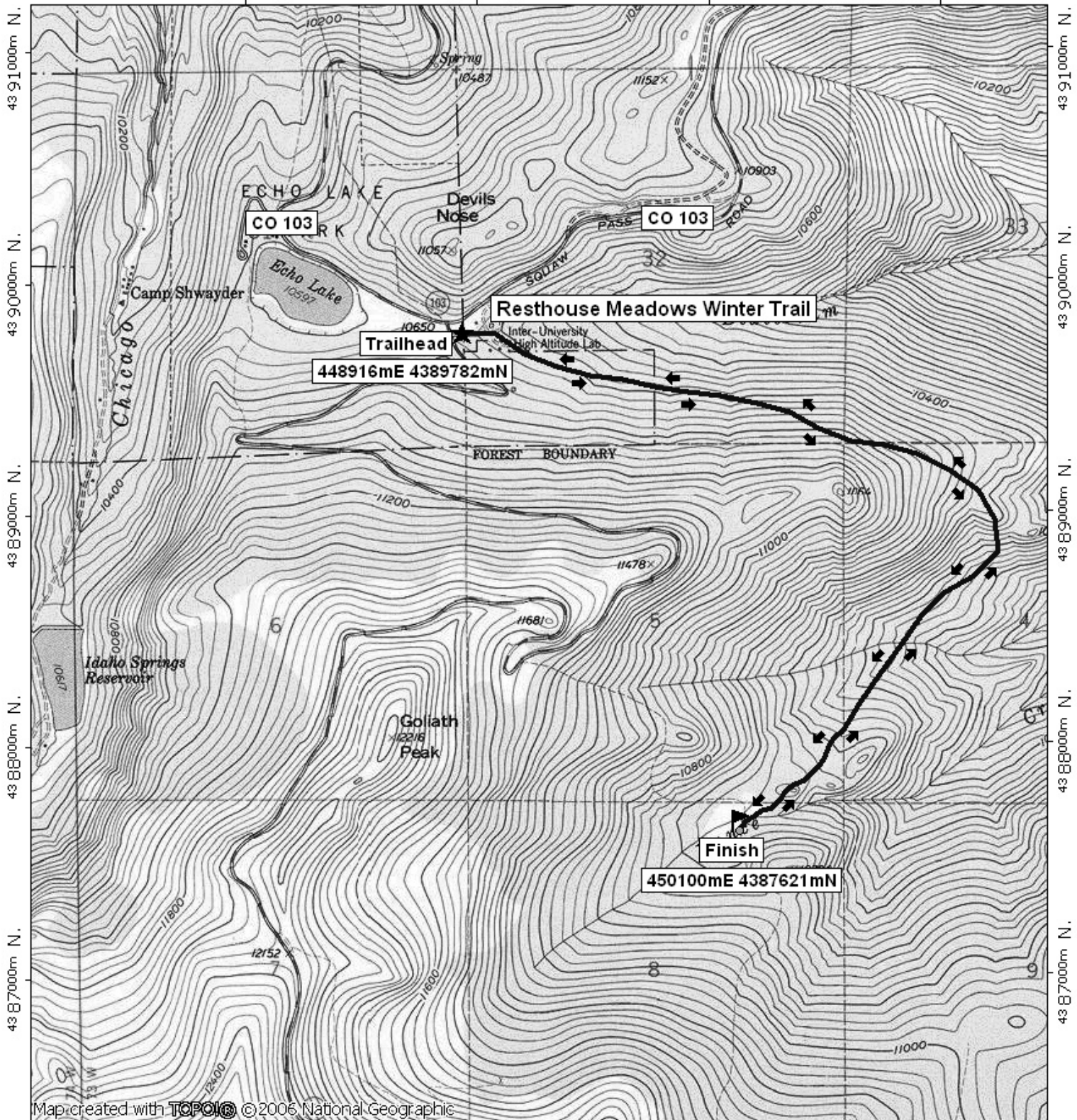
Resthouse Meadows Winter Trail Final

448000m E.

449000m E.

450000m E.

WGS84 Zone 13S 451000m E.



43 91000m N.
43 90000m N.
43 89000m N.
43 88000m N.
43 87000m N.

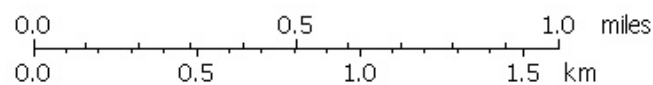
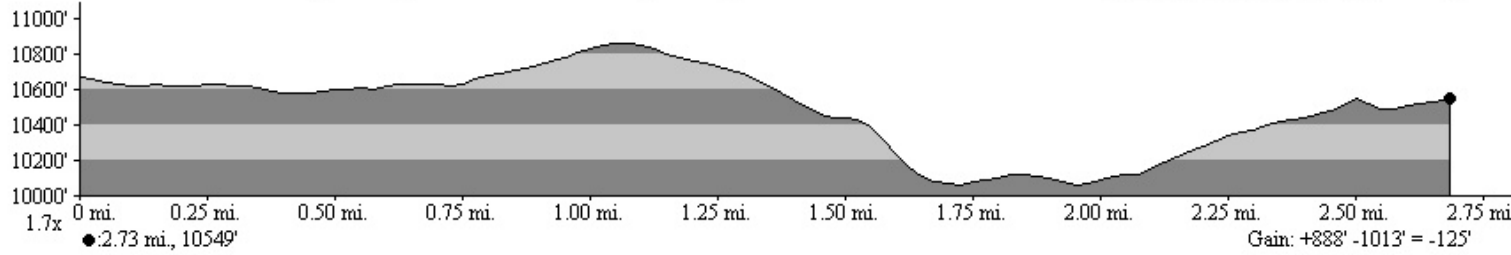
43 91000m N.
43 90000m N.
43 89000m N.
43 88000m N.
43 87000m N.

Map created with **TOPOLIC** © 2006 National Geographic

448000m E.

449000m E.

WGS84 Zone 13S 451000m E.



TN ↑ MN
9 1/2°
10/26/07