

## RUBY CREEK



## WINTER TRAIL

**FYI:** The map on the reverse side is not intended for navigation, but rather for general orientation.

**P.S.** More trail maps available at [www.oriconline.org](http://www.oriconline.org)

**Location:** Arapaho National Forest  
Below Urad Mine  
Clear Creek County

**Contact Info:** Clear Creek Ranger Dist  
303-567-3000  
[www.fs.fed.us/r2](http://www.fs.fed.us/r2)

**Length:** 1.51 miles one-way (est. mileage rounded to the nearest ¼ mile)

**Time:** The average person snowshoes apx. 1 mile an hour not including breaks. Adjust your time +/- based on terrain, snow conditions, wind speed, your skill and fitness level and whether you are snowshoeing, skiing or walking.

**Elevation Gain/Loss:** +1123' -8' =+1115'

**Difficulty:** moderate to difficult

**Activities:** Snowshoeing, skiing and hiking (when there's not enough snow)

**Season:** Mid November through mid April (Check [www.oriconline.org](http://www.oriconline.org) for snow depths and avalanche conditions)

**Dogs permitted:** Under owners' control

**Permits:** None required

**Getting There From Denver:** I-70 West to Exit 232 (apx. 38 miles from Denver). At Exit 232 take right ramp for US 40 West toward Empire/Granby. Keep straight onto CR 255. Then straight onto US 40. Continue on US Highway 40 apx. 9 ½ miles to Berthoud Falls (just before the first big switch back at the beginning of the climb up Berthoud Pass). Turn off US 40 onto Clear Creek County Road 202 and follow it apx. ¼ mile. Then, turn left on the Woods Creek Road (a.k.a. Forest Road 146). Drive apx. 1.4 miles and park at a small lot at the south end of the dam. Note mine buildings across the dam to the north.

**Maps:** NG Trails Illustrated # 103W and 104W. **Important:** Stay found with the aid of a topographic map, a compass, a GPS receiver and the skill to use them.

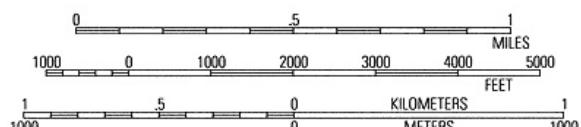
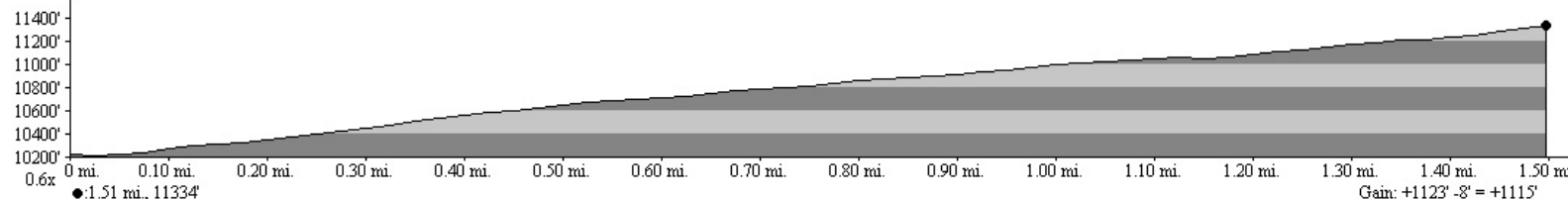
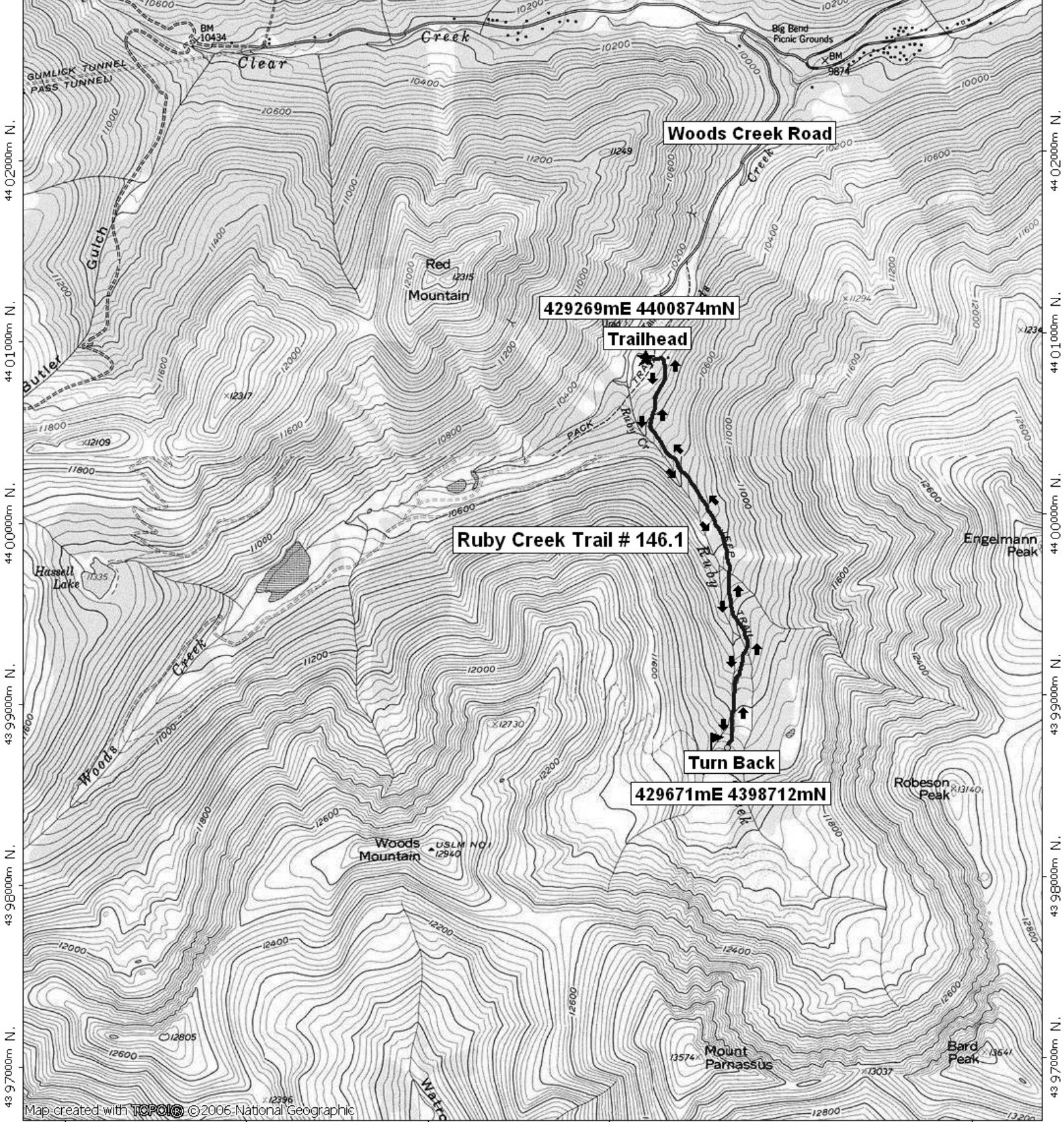
**Safety Concerns and Supplemental Info:** ■ Do not venture above timberline to avoid avalanche danger ■ Parking is limited ■ Dress appropriately for winter conditions

**Trail Description:** The trip starts up the road about 40 yards from your car at a gate on your left marked with a "Danger..Extreme Avalanche Danger" sign. This in fact, is TRUE IF YOU VENTURE ON THIS TRAIL ABOVE TIMBERLINE...DO NOT GO ABOVE TIMBERLINE!!! **Tip:** Contact the Clear Creek Ranger District for trail updates and snow conditions.

**Highlights:** Picturesque high peaks ■ Fast downhill run on skis after your climb

# Ruby Creek Winter Trail

426000m E. 427000m E. 428000m E. 429000m E. WGS84 Zone 13S 431000m E.



TN MN  
10°  
12/19/07