

SECOND CREEK TO BROOME HUT



WINTER TRAIL

FYI: The map on the reverse side is for general orientation, not for navigation.
P.S. Give and get snow and trail updates at www.facebook.com/oriccolorado

Location: Roosevelt National Forest
 N. of Berthoud Pass
 Off U.S. Hwy 40

Contact Info: Sulphur Ranger District
 970-887-4100
www.fs.fed.us/r2

Length: .74 miles one-way (est. mileage rounded to the nearest ¼ mile)

Time: The average person snowshoes apx.1 mile an hour. Adjust your time +/- based on terrain, snow conditions, wind speed, your skill and fitness levels and whether you are snowshoeing, skiing or hiking.

Elevation Gain/Loss: See trail profile on reverse side

Difficulty: Moderate

Activities: Snowshoeing, skiing and hiking (when there's not enough snow)

Season: December through March (Check www.oriconline.org for snow depths and avalanche conditions)

Dogs permitted: Under owner's control

Permits: None

From Denver: From I-70, take US Highway 40 west over Berthoud Pass. Park on the west side of the highway at mile marker 240 in the parking area along the road.

Maps: National Geographic Trails Illustrated Map #103W and or Berthoud Pass USGS 7.5 topographic map. **IMPORTANT:** Stay found with the aid of a topographic map, a compass, a GPS receiver and the skill to use them.

Safety Concerns and Supplemental Info: ■ The cirque (bowl) above the cabin is accessible in some places, but also has several areas of avalanche danger. Be careful if traveling above the hut ■ Dress appropriately for winter conditions
 ■ Plan for shorter days in this season

Trail Directions: You'll find the trail west of the parking on the north side of Second Creek. This area is dense with pine trees. As the forest begins to thin, the creek bends to the southwest of the trail. The trail then begins to climb a steep hill. At the top of this steep hill, head to the left side of a large rock outcropping. Then head toward a dead (telephone pole shaped) tree located on the left side of this rock outcropping. Follow the trail beyond the tree to the north on a fairly level area to the hut. You'll have great views of the cirque behind the hut, as well as toward the mountains on the east side of the Fraser River valley. Return the way you came. **TIP:** Contact the Clear Creek Ranger District for trail updates.

Highlights: ■ Incredible views of the Continental Divide ■ Views of the peaks and cirques of the Vasquez Peak Wilderness

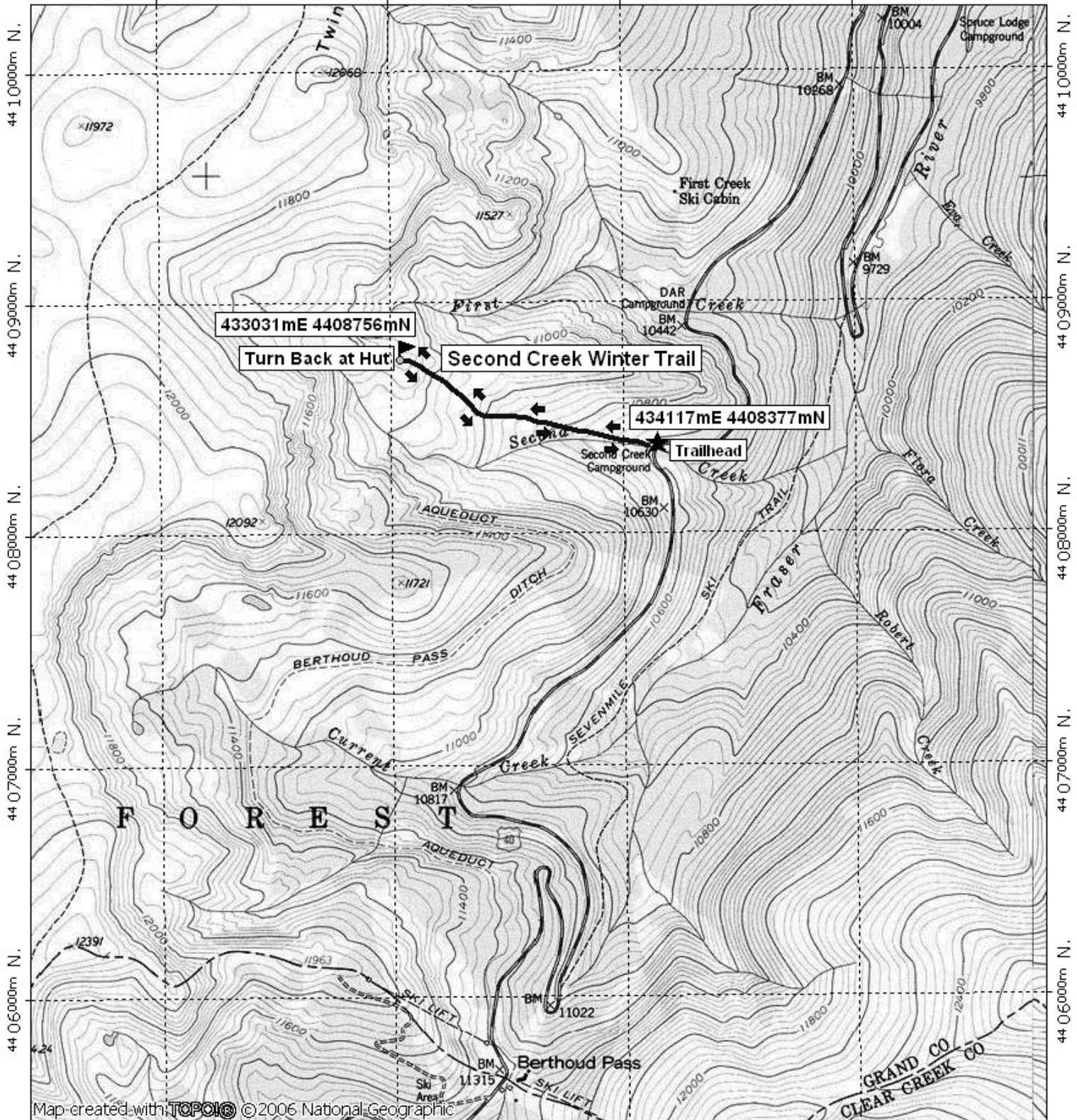
© 2007 ORIC All rights reserved.

Visit us in the REI DENVER FLAGSHIP STORE
OUTDOOR RECREATION INFORMATION CENTER ■ 1416 Platte Street ■ Denver CO 80202
 Ask us. We'll Tell You Where To Go ■ www.oriconline.org ■ Updated: 2-30-2018
 Follow us on: ■ facebook.com/oriccolorado ■ Twitter: @oricbryan



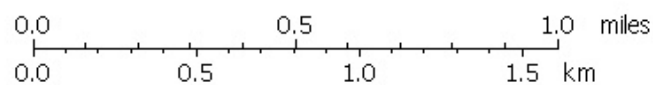
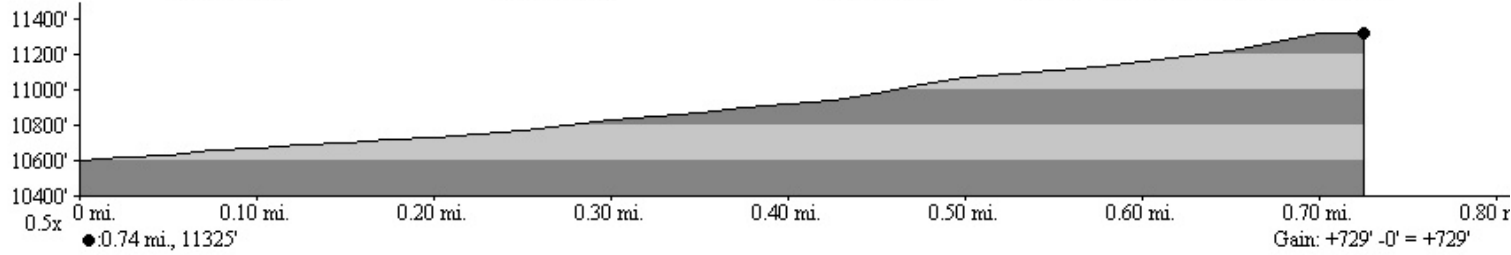
Second Creek to Hut Winter Trail Final

432000m E, 433000m E, 434000m E, WGS84 Zone 13S 435000m E.



Map created with **TOPOL** © 2006 National Geographic

432000m E, 433000m E, 434000m E, WGS84 Zone 13S 435000m E.



TN ↑ MN
10°
11/02/07