

SOUTH CHICAGO CREEK



WINTER TRAIL

FYI: The map on the reverse side is not intended for navigation, but rather for general orientation.
P.S. More trail maps available at www.oriconline.org

Location: Arapaho National Forest
Mt. Evans Wilderness
W. of Echo Lake

Contact Info: Clear Creek Ranger District
303-567-3000
www.fs.fed.us/r2

Length: 1.56 miles one-way (est. mileage rounded to the nearest ¼ mile)

Time: The average person snowshoes apx. 1 mile an hour, not including breaks. Adjust your time +/- based on terrain, snow conditions, wind speed, your skill and fitness level and whether you are snowshoeing, skiing or hiking.

Elevation Gain/Loss: +724' -0' = +724'

Difficulty: Moderate

Activities: Snowshoeing, skiing and hiking (when there's not enough snow)

Season: Mid November through April (Check www.oriconline.org for snow depths and avalanche conditions)

Dogs permitted: Under owner's control

Permits: None

Getting There From Denver: Take I-70 to Idaho Springs. Turn left (south) onto CO 103 for 8.6 miles to the Hefferman Gulch Road. Park on the right at this side road with a stop sign and a dead end sign.

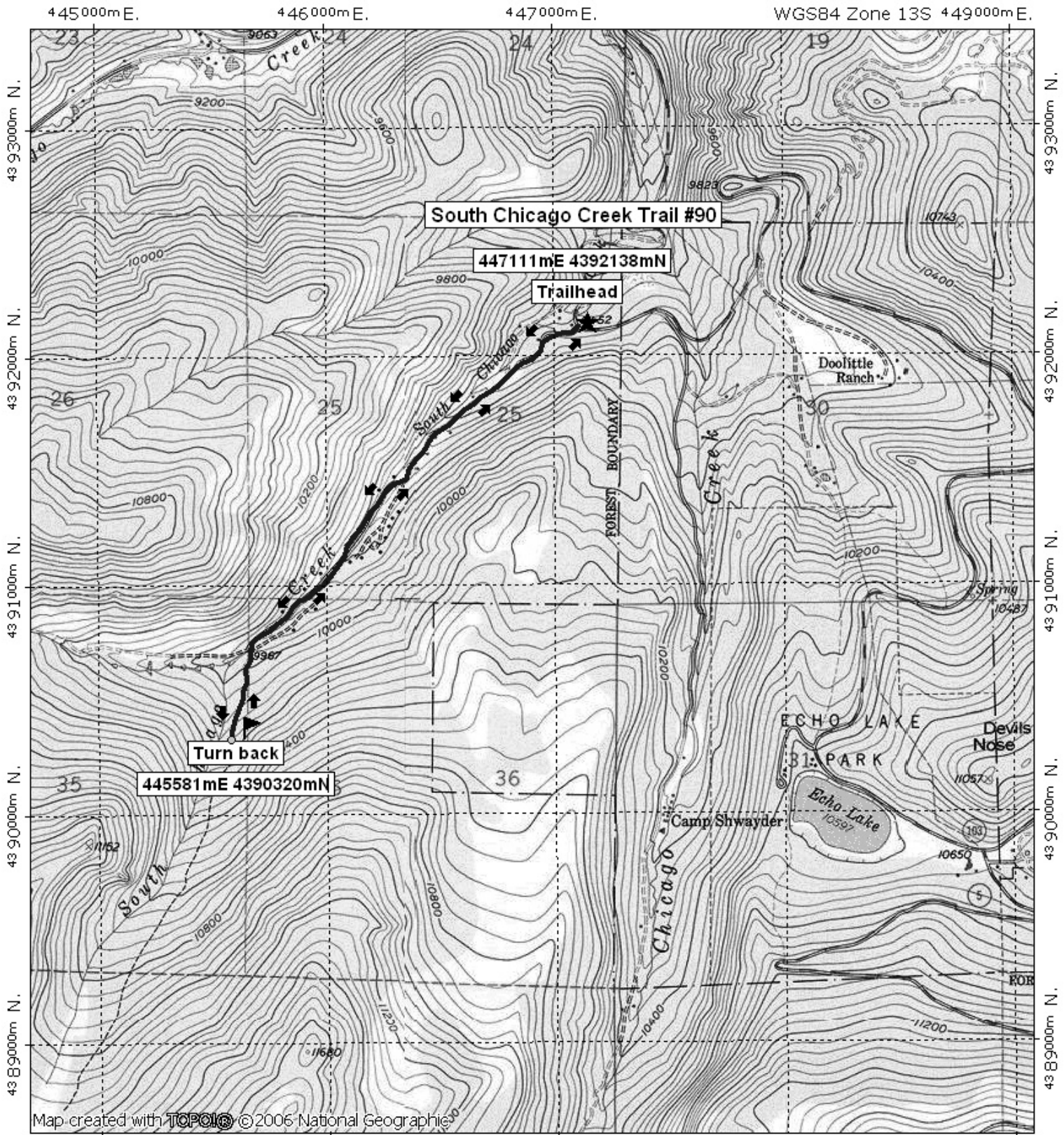
Maps: National Geographic Trails Illustrated # 104E and or Georgetown and Idaho Springs USGS 7.5 topographic maps. **IMPORTANT:** Stay found with the aid of a topographic map, a compass, a GPS receiver and the skill to use them.

Safety Concerns and Supplemental Info: ■ Parking is limited ■ Dress appropriately for winter conditions ■ Plan for shorter days in the Winter months

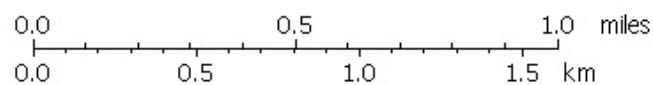
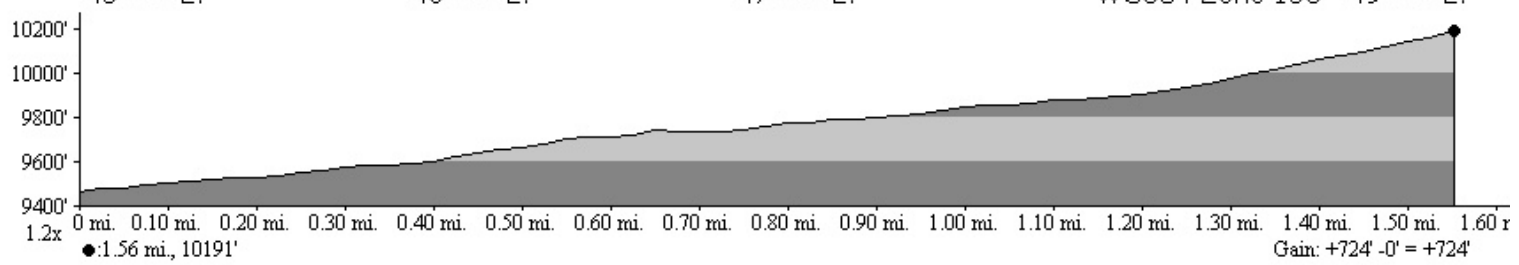
Trail Description: Start up the side road. Pass a series of cabins and reach a fork at .7 miles. Continue to the right for apx .4 miles to a second fork. Go left here for another 200 yards to a Mt Evans Wilderness Boundary sign. This is the turn around point. Option: Beyond this sign a trail continues into the wilderness and ascends steeply 1 ½ miles before ending near timberline.

TIP: Contact the Clear Creek Ranger District for trail updates and snow conditions.

South Chicago Creek Winter Trail Final



Map created with **TOPOL** © 2006 National Geographic



TN MN
9 1/2°

11/02/07