



TEE PEE MEADOW

WINTER TRAIL

FYI: The map on the reverse side is not intended for navigation, but rather for general orientation.

P.S. More trail maps available at www.oriconline.org

Location: Arapaho National Forest
Fraser Valley
South of Winter Park

Contact Info: Sulphur Ranger District
970-887-4100
www.fs.fed.us/r2

Length: 1.08 miles one-way (est. mileage rounded to the nearest ¼ mile)

Time: The average person snowshoes apx. 1 mile an hour, not including breaks. Adjust your time +/- based on terrain, snow conditions, wind speed, your skill and fitness level and whether you are snowshoeing, skiing or hiking.

Elevation Gain/Loss: +534' -0' = +534'

Difficulty: Easy

Activities: Snowshoeing, skiing and hiking (when there's not enough snow)

Season: December through March (Check www.oriconline.org for snow depths and avalanche conditions)

Dogs permitted: Under owner's control

Permits: None

Getting There from US 40: The trailhead is on US highway 40, at the switch back between mile markers 236 and 237. There is a pull out for parking

Maps: National Geographic Trails Illustrated #103W and or Berthoud Pass USGS 7.5 topographic map. **IMPORTANT:** Stay found with the aid of a topographic map, a compass, a GPS receiver and the skill to use them.

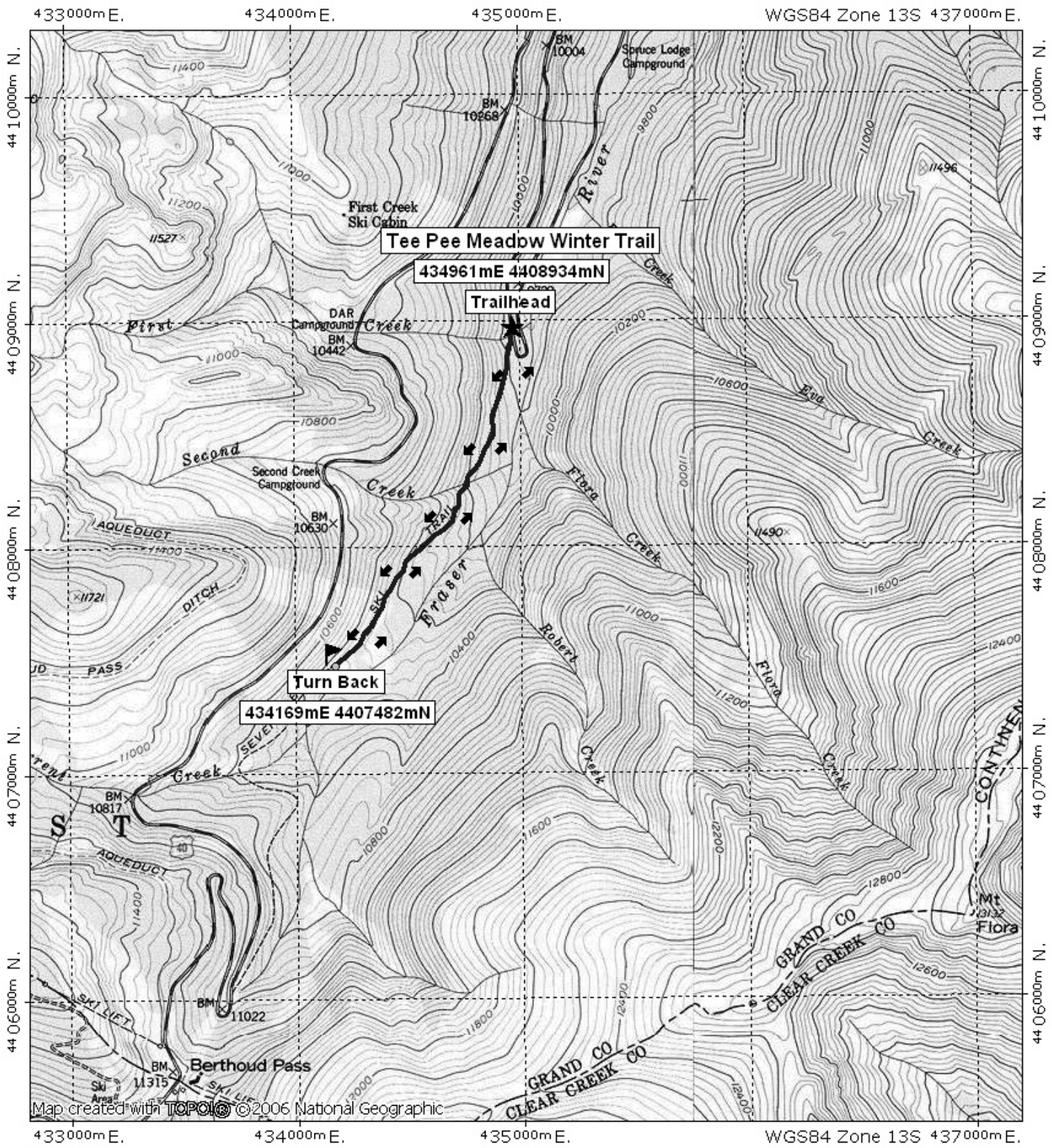
Safety Concerns and Supplemental Info: ■ Dress appropriately for winter conditions ■ Check avalanche conditions before starting out on this trail ■ Plan for shorter days in the Winter months

The Trail: Heading south, gently ascend and cross several creek beds. When the forest becomes dense continue south to a meadow (at the north edge of the meadow there is a small fallen cabin on the right) Continue through the meadow and through the woods to the next meadow. Return the way you came.

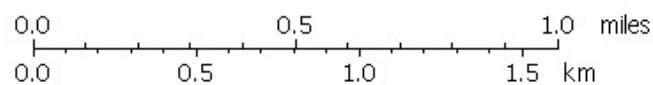
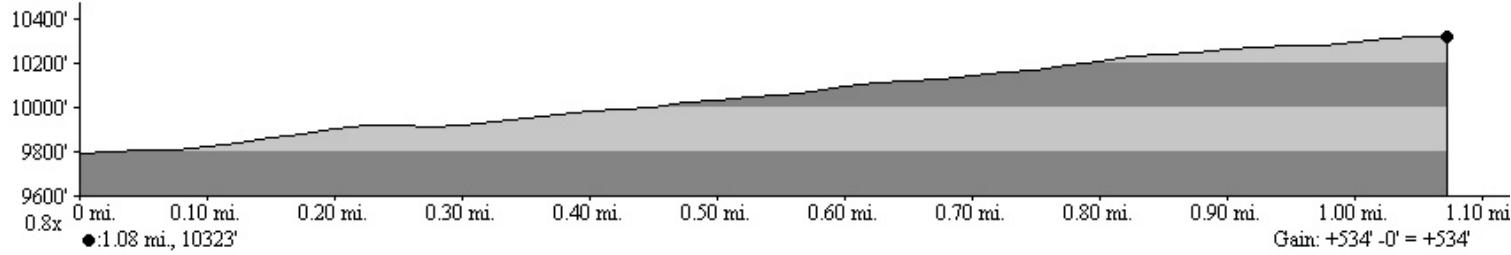
TIP: Contact the Sulphur Ranger District for trail updates and snow conditions.

Highlights: ■ This trail was once a logging road ■ Spruce forest ■ Historic cabin and a teepee frame ■ Views of Mt. Eva and Parry Peak

Tee Pee Meadow Winter Trail Final



Map created with **TOPOLOGIC** ©2006 National Geographic



TN ↑ MN
10°
11/02/07