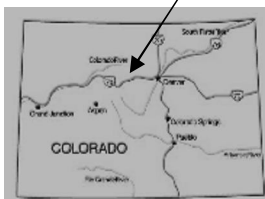


WATROUS GULCH



WINTER TRAIL

FYI: The map on the reverse side is not intended for navigation, but rather for general orientation.
P.S. More trail maps available at www.oriconline.org

Location: Arapaho National Forest
 East of Eisenhower Tunnel
 Off Exit 218

Contact Info: Clear Creek Ranger District
 303-567-3000
www.fs.fed.us/r2

Length: 1.27 miles one-way (est. mileage rounded to the nearest ¼ mile)

Time: The average person snowshoes apx. 1 mile an hour, not including breaks. Adjust your time +/- based on terrain, snow conditions, wind speed, your skill and fitness level and whether you are snowshoeing, skiing or hiking.

Elevation Gain: +1112' -120' = +992'

Difficulty: Moderate

Activities: Snowshoeing, skiing and hiking (when there's not enough snow)

Season: Late November through March (Check www.oriconline.org for snow depths and avalanche conditions)

Dogs permitted: Under owner's control

Permits: None

Getting There From Denver: Take I-70 west to Exit 218. Get off at this exit and turn right onto Forest Road 98. This road will lead to the parking area and restrooms which are at the trailhead.

Maps: National Geographic Trails Illustrated # 104W and or Grays Peak USGS 7.5 topographic map. **IMPORTANT:** A topographic map, compass and a GPS receiver will aid you in staying found.

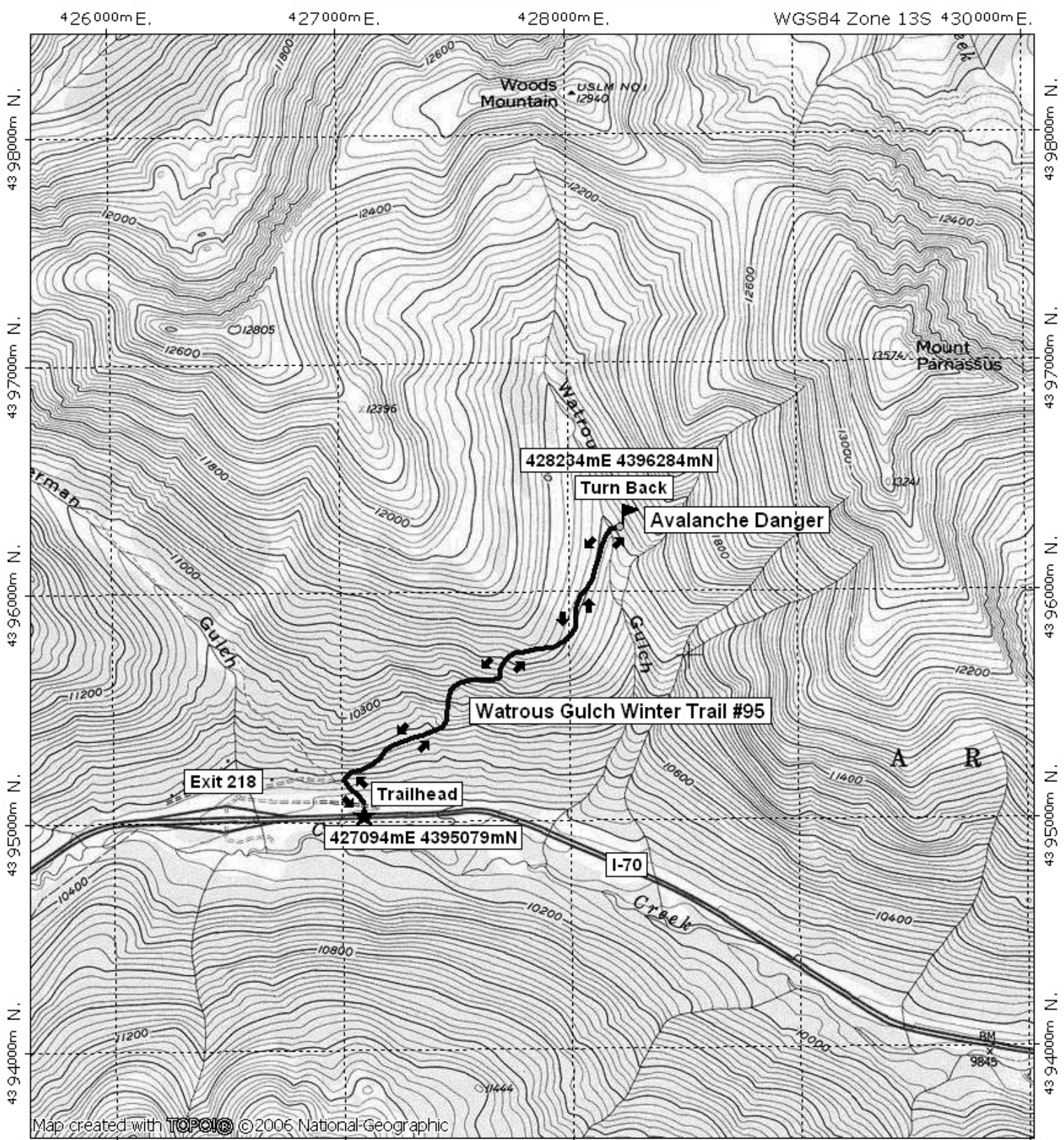
Safety Concerns and Supplemental Info: ■ Do not travel beyond the creek crossing at 11,000 feet (just above timberline). Even though this valley goes further, there is **EXTREME AVALANCHE EXPOSURE** ■ Plan for shorter days in the Winter months

Trail Description: The trail splits after 75 to 100 yards from the trailhead. The left fork goes up Herman Gulch and the right fork goes up Watrous Gulch. The trail climbs fairly steeply, but with no significant obstructions all the way to timberline. At this point the trail drops slightly across Watrous creek to a wooded glade . . . a nice spot for lunch. Return the way you came. Be careful of excess speed on the descent if you are on skis.

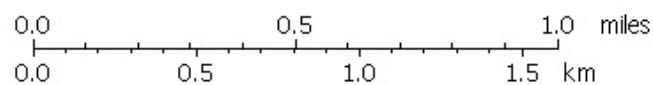
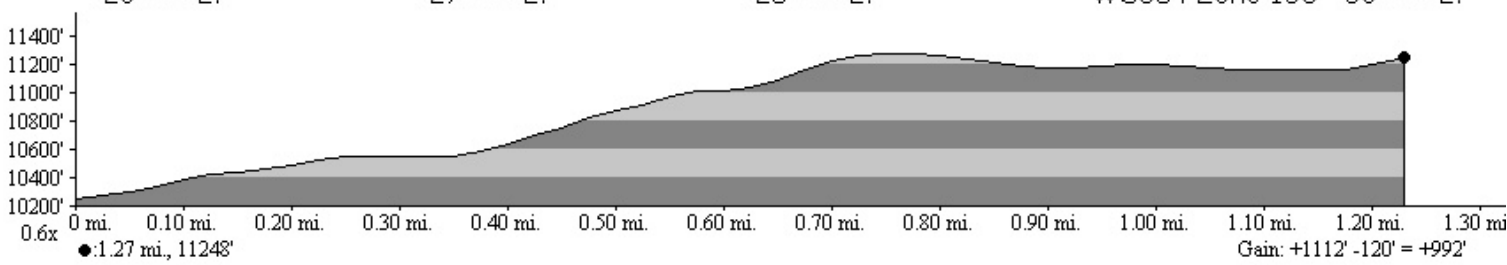
TIP: Contact the Clear Creek Ranger District for trail updates and snow conditions.

Highlights: ■ Wonderful views of a high alpine basin and several impressive, high peaks

Watrous Gulch Winter Trail Final



Map created with **TOPOLIC** ©2006 National Geographic



TN ↑ MN
10°
11/02/07