

BRUNO GULCH

WINTER TRAIL

FYI: The map on the reverse side is for general orientation, not for navigation.
P.S. Give and get snow and trail updates at www.facebook.com/oriccolorado

Location: Pike National Forest
 Off of Guanella Pass Rd
 N. of Grant on Park CR 62

Contact Info: South Platte Ranger District
 303-275 5610
www.fs.fed.us/r2

Length: 2.31 miles one-way (est. mileage rounded to the nearest ¼ mile)

Time: The average person snowshoes apx.1 mile an hour. Adjust your time +/- based on terrain, snow conditions, wind speed, your skill and fitness levels and whether you are snowshoeing, skiing or hiking.

Elevation Gain/Loss: See trail profile on reverse side

Difficulty: Easy to moderate

Activities: Snowshoeing, skiing and hiking (when there's not enough snow)

Season: December through March (Check www.oriconline.org for snow depths and avalanche conditions)

Dogs permitted: Under owner's control

Permits: None

From Denver: Drive west from Denver on US Highway 285 to Grant. Turn right (north) onto Park County Road # 62 (The Guanella Pass Road). After a steeper section of road with switch backs, you arrive at a large, flat meadow, and soon after, pass the Burning Bear Campground on your right. Drive approximately ¾ to 1 mile further and turn left onto the Bruno Gulch Road. This road is not maintained in the winter. The distance you can drive on it will be determined by the snow conditions.

Maps: National Geographic Trails Illustrated # 104E and or Mount Evans and Montezuma USGS 7.5 topographic maps **IMPORTANT:** Stay found with the aid of a topographic map, a compass, a GPS receiver and the skill to use them.

Safety Concerns and Supplemental Info: ■ Dress appropriately for winter conditions ■ Plan for shorter days in this season

Trail Description: A road that later becomes a trail which then follows a stream through a tree lined valley. The parking area starts where the snow plowing ends. Your adventure begins here. Strap on your snowshoes and head west on this road. The road changes to a trail at the vehicle barricade. This trail parallels the north side of Bruno Creek. You will climb gradually along Bruno Gulch. Continue to the junction with the South Park Trail # 600. Return the way you came.

TIP: Contact the South Platte Ranger District for trail updates and snow conditions.

Highlights: ■ Quiet, winter woods ■ Rolling terrain ■ High peaks in the distance

Visit us in the REI DENVER FLAGSHIP STORE
OUTDOOR RECREATION INFORMATION CENTER ■ 1416 Platte Street ■ Denver CO 80202
 Ask us. We'll Tell You Where To Go ■ www.oriconline.org ■ Updated: 12-9-2017
 Follow us on: ■ facebook.com/oriccolorado ■ Twitter: @oricbryan



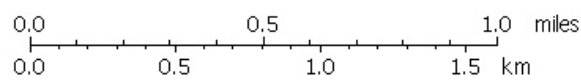
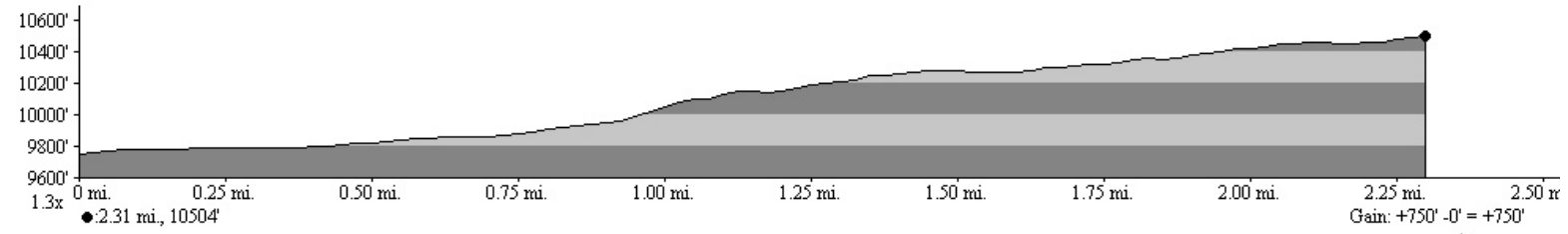
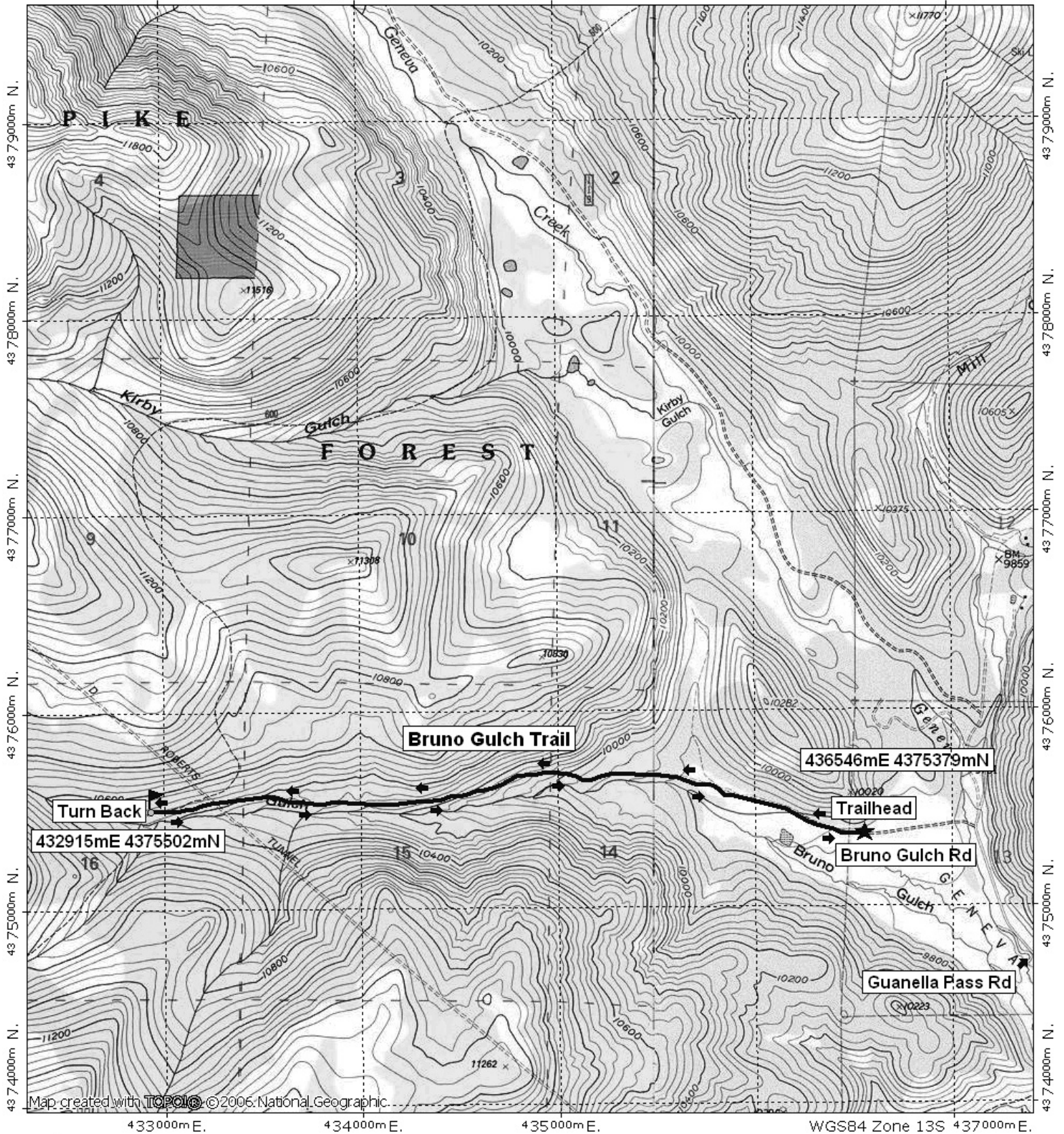
Bruno Gulch Winter Trail Final

433000m E.

434000m E.

435000m E.

WGS84 Zone 13S 437000m N.



TN MN
10°
10/27/07

Map created with **TOPOLIO** ©2006 National Geographic