

BURNING BEAR

WINTER TRAIL

FYI: The map on the reverse side is for general orientation, not for navigation.
P.S. Give and get snow and trail updates at www.facebook.com/oriccolorado

Location: Pike National Forest
N. of Grant on Park CR 62
Just before Abyss Trail #602

Contact Info: South Platte Ranger District
303-275-5610
www.fs.fed.us/r2

Length: 2.82 miles one-way (est. mileage rounded to the nearest ¼ mile)

Time: The average person snowshoes apx.1 mile an hour. Adjust your time +/- based on terrain, snow conditions, wind speed, your skill and fitness level and whether you are snowshoeing, skiing or hiking.

Elevation Gain/Loss: See trail profile on reverse side

Difficulty: Easy to moderate (depending upon how far you go)

Activities: Snowshoeing, skiing and hiking (when there's not enough snow)

Season: December through March (Check www.oriconline.org for snow depths and avalanche conditions)

Dogs permitted: Under owner's control

Permits: None required

From Denver: Take U.S. Highway 285 to Grant. Turn right (north) at Grant onto Park County Road 62 (Guanella Pass Road). Proceed approximately 6 miles to the Burning Bear trailhead. The parking area is on your right. Do not confuse this trailhead with the Burning Bear Campground which is about 50 to 100 yards further north on Park County Road 62.

Maps: National Geographic Trails Illustrated # 104E and or the Mt Evans USGS 7.5 topographic map. **IMPORTANT:** Stay found with the aid of a topographic map, a compass, a GPS receiver and the skill to use them.

Safety Concerns and Supplemental Info: ■ Dress appropriately for winter conditions ■ Plan for shorter days in this season

Trail Description: The trailhead is on the opposite side of Park County Road 62 from the parking area. Follow Burning Bear Trail # 601 alongside Geneva and then Burning Bear Creeks. Then traverse a series of easy switchbacks to the trip's high point (10,780 feet). Return the way you came. This is a quiet valley hike with lodgepole pines as your companions. You never really come out of the valley so this is not a hike for the views.

TIP: Contact the South Platte Ranger District for trail updates and snow conditions.

Highlights: ■ A gentle trail which passes through beautiful forests and meadows. You follow bucolic creek drainages until the upper reaches of the trail. ■ Stately lodgepole pines ■ Log cabin remains

Visit us in the REI DENVER FLAGSHIP STORE

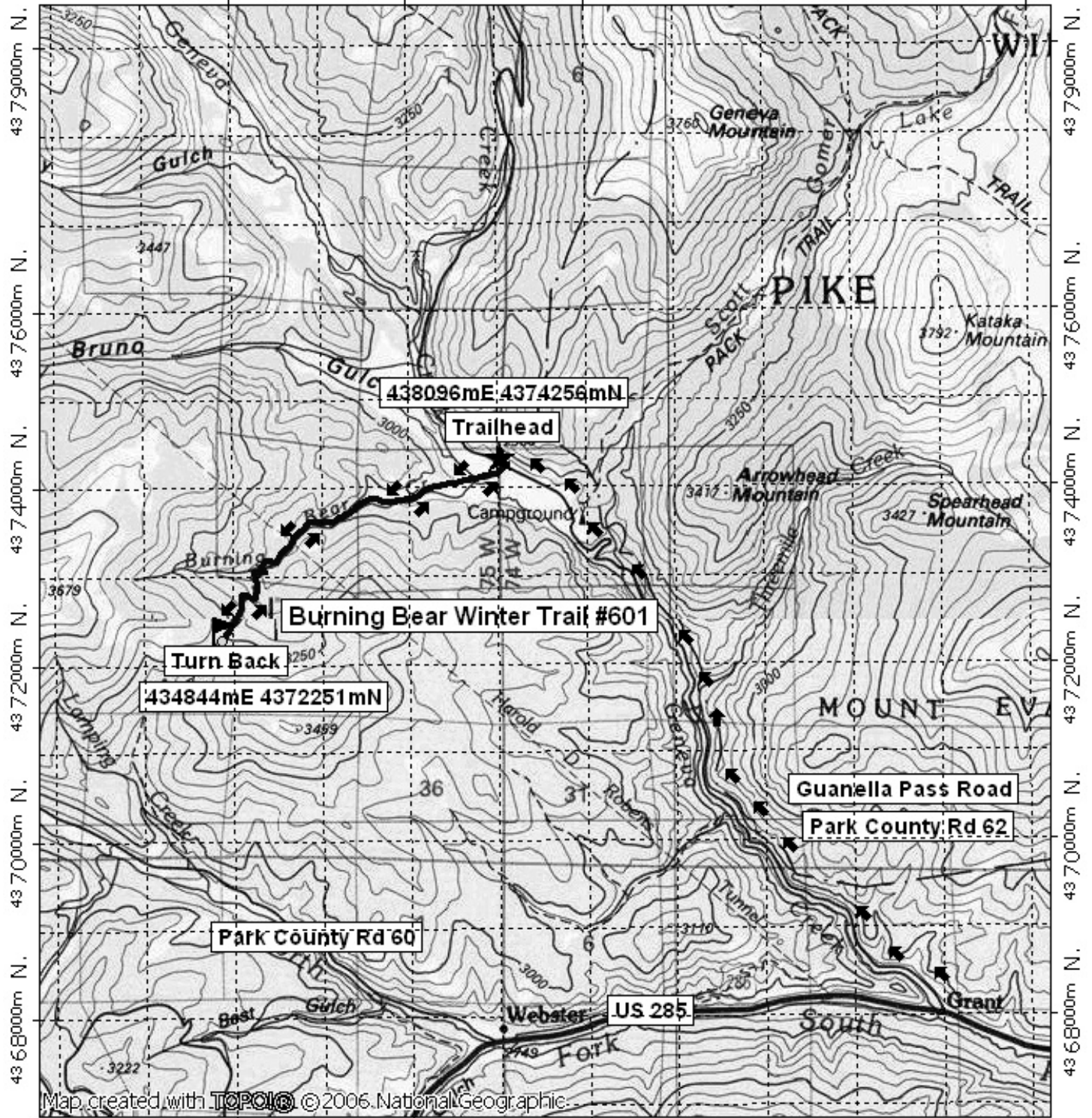
OUTDOOR RECREATION INFORMATION CENTER ■ 1416 Platte Street ■ Denver CO 80202
Ask us. We'll Tell You Where To Go ■ www.oriconline.org ■ Updated: 12-9-2017

Follow us on: ■ facebook.com/oriccolorado ■ Twitter: @oricbryan

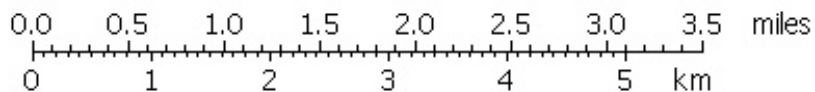
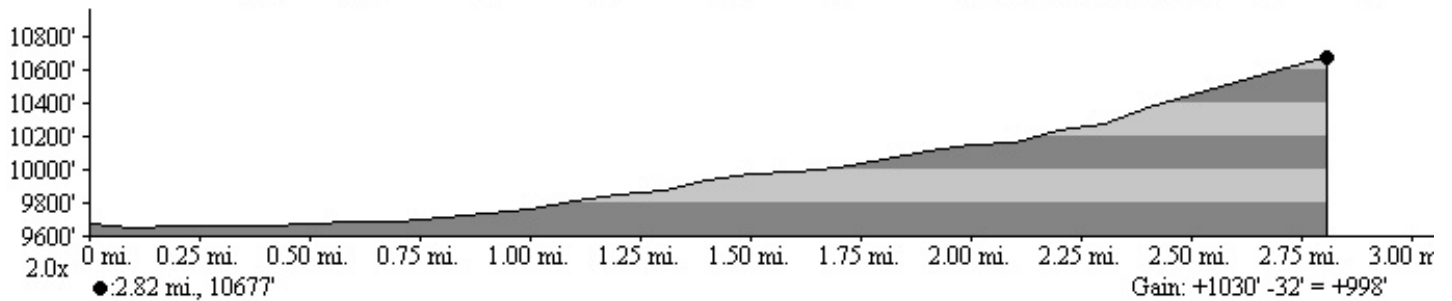


Burning Bear Winter Trail Final

435000m E, 437000m E, 439000m E, WGS84 Zone 13S 444000m E.



435000m E, 437000m E, 439000m E, WGS84 Zone 13S 444000m E.



TN MN
9 1/2°
11/01/07