

CHICAGO LAKES

WINTER TRAIL

FYI: The map on the reverse side is for general orientation, not for navigation.
P.S. Give and get snow and trail updates at www.facebook.com/oriccolorado

Location: Mt. Evans Wilderness
Arapaho National Forest
Near Echo Lake

Contact Info: Clear Creek Ranger District
303-567-4382
www.fs.fed.us/r2

Length: 4.24 miles out & back (est. mileage rounded to the nearest ¼ mile)

Time: The average person snowshoes apx.1 mile an hour. Adjust your time +/- based on terrain, snow conditions, wind velocity, your skill and fitness levels and whether you are snowshoeing, skiing or hiking.

Elevation Gain/Loss: See trail profile on reverse side

Difficulty: Moderate to strenuous (depending upon how far you choose to go)

Activities: Snowshoeing, skiing and hiking (when there's not enough snow)

Season: December through March (Check www.oriconline.org for snow depths and avalanche conditions)

Dogs permitted: On hand-held leash

Permits: Free use permit at trailhead

From Denver: Take I-70 west to Idaho Springs. Get off on Exit 240 and head south on CO Highway 103. Follow CO 103 until it intersects with CO 5 at Echo Lake. There are several social trails in the area, simply head toward the southwest corner of Echo Lake.

Maps: National Geographic Trails Illustrated Map #104E and or the Idaho Springs, Georgetown and Mount Evans USGS 7.5 topographic maps. **IMPORTANT:** Stay found with the aid of a topographic map, a compass, a GPS receiver and the skill to use them.

Safety Concerns and Supplemental Info: ■ Dress appropriately for winter conditions ■ Plan for shorter days in this season

Trail Description: Up valley hike with outstanding views of the Mt. Evans massif. Start the hike at the Echo Lake southwest parking area. Pass by an old burn area. As you leave Echo Lake, the Chicago Lakes Trail #52 goes downhill for the first mile. Cross the stream and turn left. Here Chicago Creek is dammed to form the Idaho Springs Reservoir. This will be the easy part of the hike for the trail then climbs uphill the rest of the way. You pass through an old burn area where 400 acres burned in the 1978 Reservoir Fire. Lower Chicago Lake sits just at treeline. It offers excellent views of the surrounding peaks. **TIP:** Contact the Clear Creek Ranger District for trail updates and snow conditions.

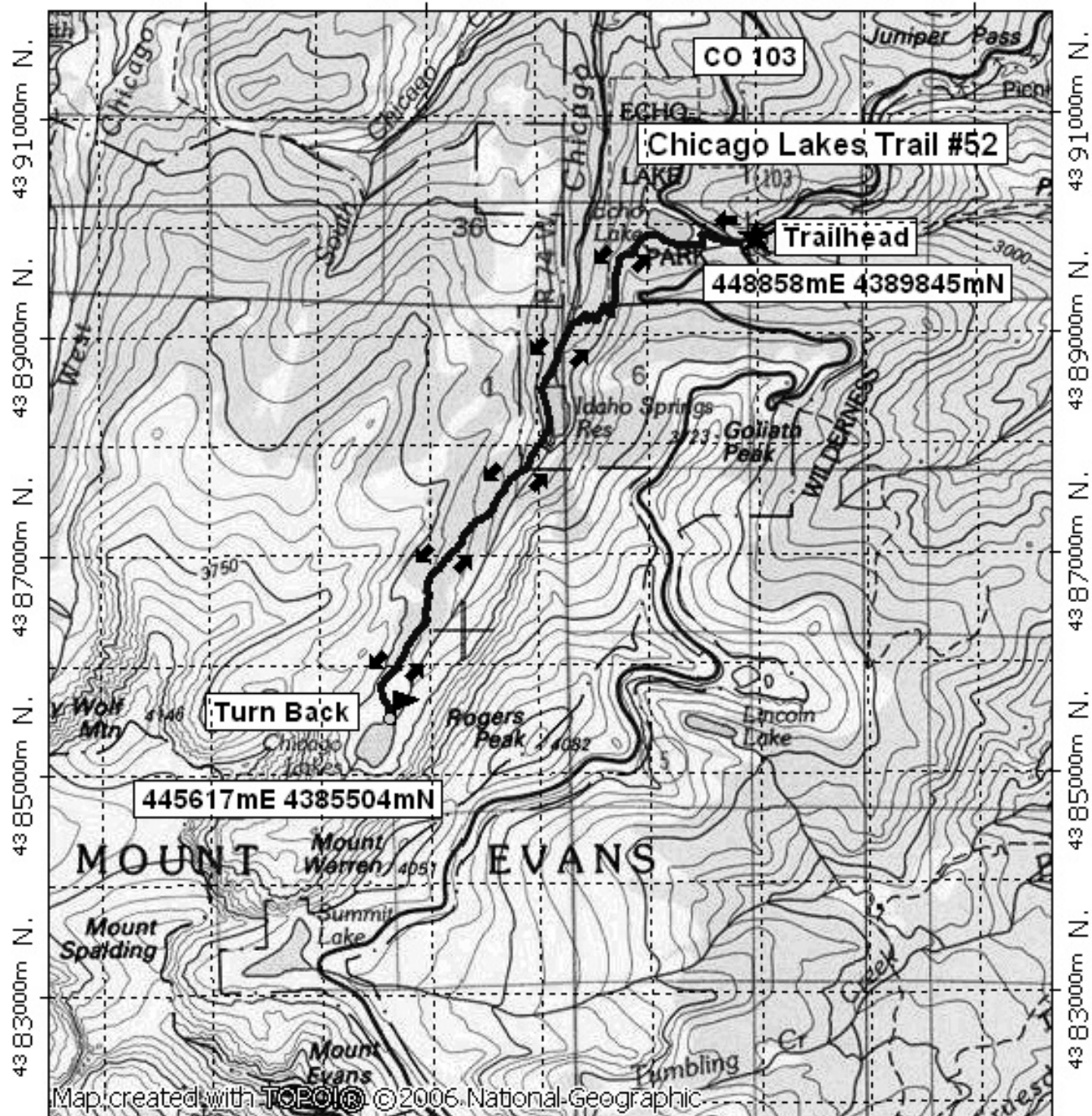
Highlights: ■ Alpine scenery ■ Valley hike ■ Basin surrounded by high cliffs ■ Dramatic rock walls ■ Good views of Sugarloaf Peak and Gray Wolf Mtn

© 2007 ORIC All rights reserved.

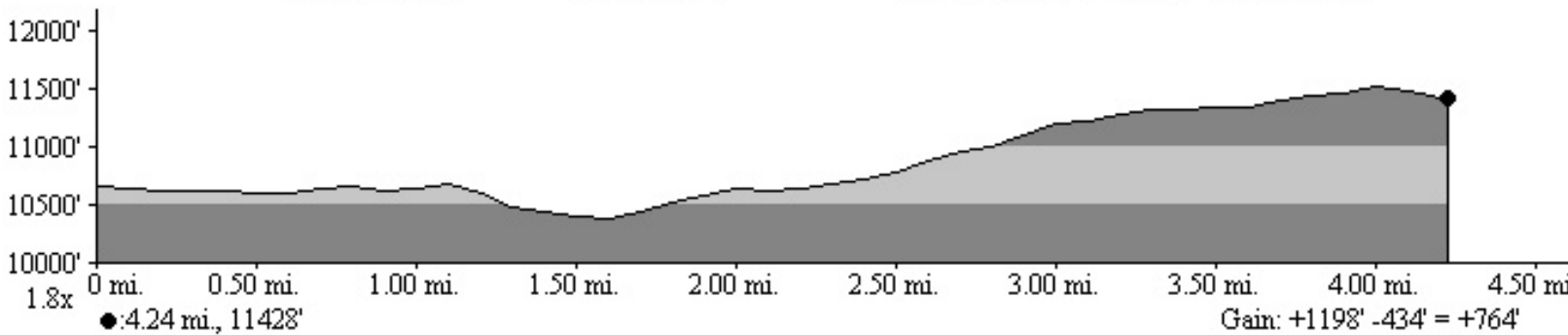


Chicago Lakes Winter Trail Final

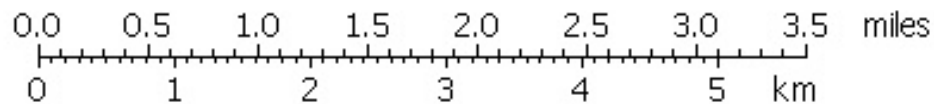
444000m E, 446000m E, WGS84 Zone 13S 451000m E.



444000m E, 446000m E, WGS84 Zone 13S 451000m E.



NATIONAL GEOGRAPHIC



TN MN
9 1/2°
10/28/07