



# CHIEF MOUNTAIN

## WINTER TRAIL

**FYI:** The map on the reverse side is not intended for navigation, but rather for general orientation.

**P.S.** More trail maps available at [www.oriconline.org](http://www.oriconline.org)

**Location:** Arapaho National Forest  
Off Squaw Pass Road  
Near Mile Marker 19

**Contact Info:** Clear Creek Ranger District  
303-567-3000  
[www.fs.fed.us/r2](http://www.fs.fed.us/r2)

**Length:** 1.04 miles one-way (est. mileage rounded to the nearest ¼ mile)

**Time:** The average person snowshoes apx. 1 mile an hour, not including breaks. Adjust your time +/- based on terrain, snow conditions, wind, your skill and fitness level and whether you are snowshoeing, skiing or hiking.

**Elevation Gain/Loss:** +992' -0' = +992'

**Difficulty:** Moderate

**Activities:** Snowshoeing, skiing and hiking (when there's not enough snow)

**Season:** December through March (Check [www.oriconline.org](http://www.oriconline.org) for snow depths and avalanche conditions)

**Dogs permitted:** Under owner's control

**Permits:** None required

**Getting There From Denver:** Take I-70 west to exit 252. Head south on CO 74 (Evergreen Parkway). Turn right onto CO 103 (Squaw Pass Road). Drive apx. 12 ½ miles and park on the right side of road (not an established parking area) just past mile marker 19. The trailhead is across the road to the south and goes up steeply for the first few feet past a concrete marker numbered 290.

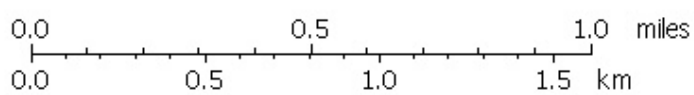
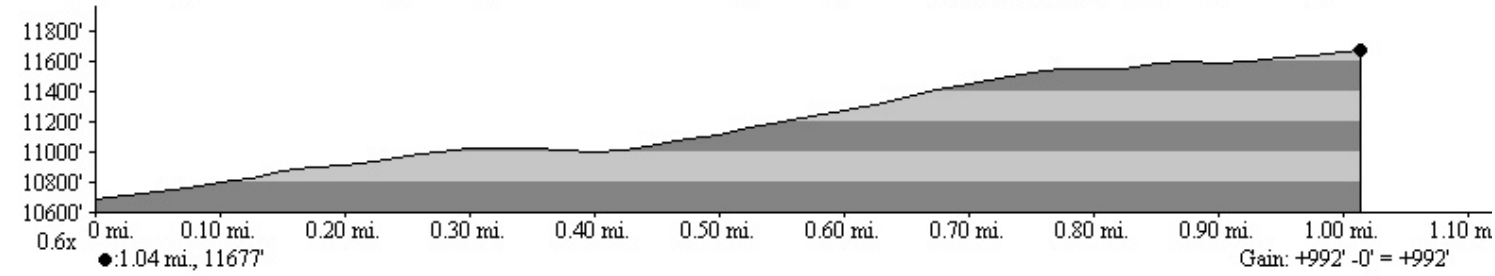
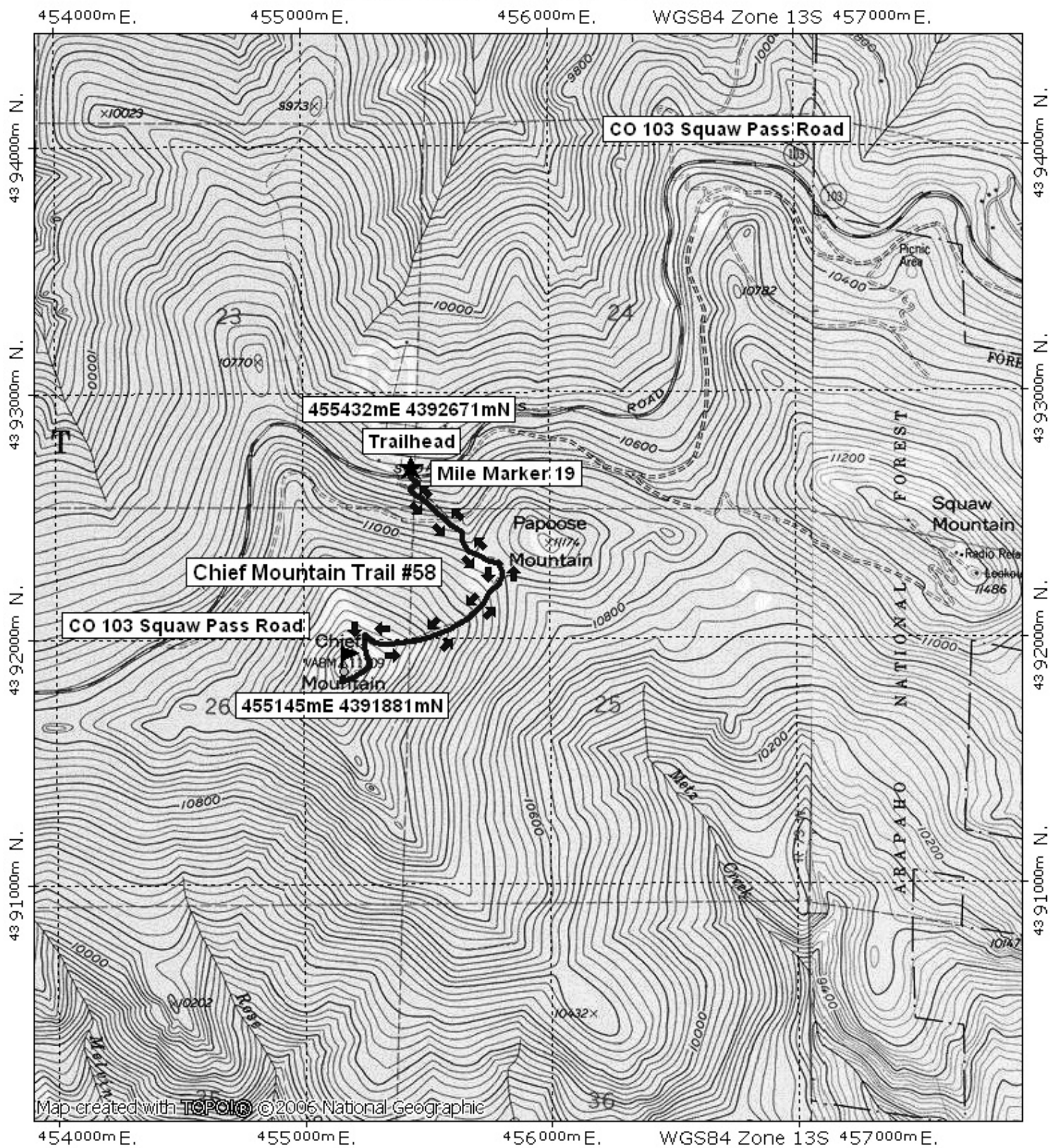
**Maps:** National Geographic Trails Illustrated # 104E and or Idaho Springs USGS 7.5 topographic map. **IMPORTANT:** Stay found with the aid of a topographic map, a compass, a GPS receiver and the skill to use them.

**Safety Concerns and Supplemental Info:** ■ Parking is limited, go early to get a spot ■ Dress appropriately for winter conditions ■ Plan for shorter days in the Winter months

**Trail Description:** Park on the shoulder just past Mile Marker 19. Cross to the Southside of the road and look for the Trailhead marker. Chief Mountain Trail #58 starts here and proceeds to the top of Chief Mountain. You may want to explore the Old Squaw Mountain Pass Road you cross soon after you start the trail. Otherwise, cross over the road and you will see a sign pointing you in the direction of Chief Mountain. **TIP:** Contact the Clear Creek Ranger District for trail updates and snow conditions.

**Highlights:** ■ Wonderful views of the peaks of the Continental Divide ■ Stately stands of Limber Pine, Englemann Spruce and Lodgepole pine

# Chief Mountain Winter Trail Final



TN ↑ MN  
9 1/2°  
11/01/07