



## COLORADO MINES PEAK

### WINTER TRAIL

**FYI:** The map on the reverse side is not intended for navigation, but rather for general orientation.

**P.S.** More trail maps available at [www.oriconline.org](http://www.oriconline.org)

**Location:** Arapaho National Forest  
Berthoud Pass

**Contact Info:** Sulphur Ranger District  
970-887-4100  
[www.fs.fed.us/r2](http://www.fs.fed.us/r2)

**Length:** 1.40 miles one-way (est. mileage rounded to the nearest ¼ mile)

**Time:** The average person snowshoes apx. 1 mile an hour, not including breaks. Adjust your time +/- based on terrain, snow conditions, wind speed, your skill and fitness level and whether you are snowshoeing, skiing or hiking.

**Elevation Gain/Loss:** +1187' -2' = +1185'

**Difficulty:** Easy to moderate (follows a jeep service road all the way)

**Activities:** Snowshoeing and hiking (when there's not enough snow)

**Season:** December through March (Check [www.oriconline.org](http://www.oriconline.org) for snow depths and avalanche conditions)

**Dogs permitted:** Under owner's control

**Permits:** None required

**Getting There from Denver:** Take I-70 West to US Highway 40 (Exit 232). Take US Highway 40 to the top of Berthoud Pass. Park in the lot on the right-hand (north) side of the highway. The trailhead is on the south side of the highway.

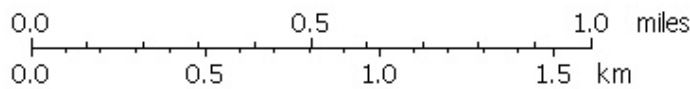
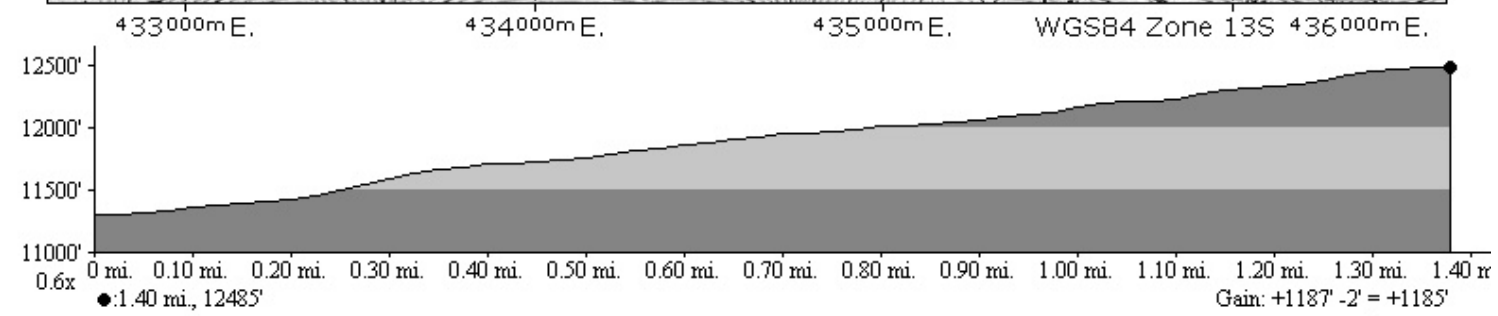
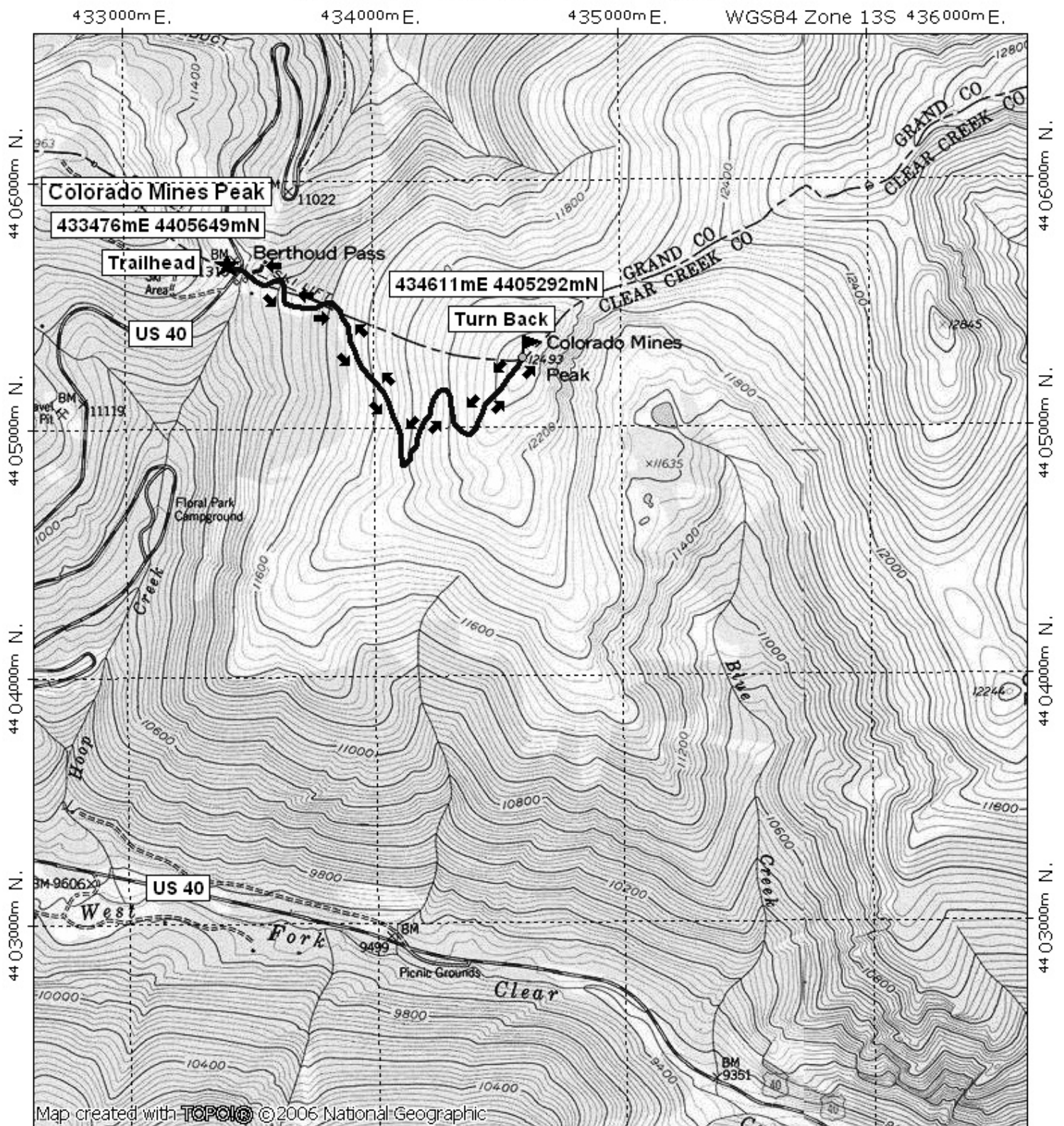
**Maps:** National Geographic Trails Illustrated # 103W and or Berthoud Pass USGS 7.5 topographic map. **IMPORTANT:** Stay found with the aid of a topographic map, a compass, a GPS receiver and the skill to use them.

**Safety Concerns and Supplemental Info:** ■ This hike is mostly above timberline. Beware of high winds and white out conditions. The area near the top of this trip may be devoid of snow because of the wind ■ Dress appropriately for winter conditions ■ Plan for shorter days in the Winter months

**Trail Description:** Above treeline hike with views of the surrounding peaks. From the parking lot, progress into the trees to the north, following a jeep service road, up switchbacks, to timberline. The road heads south and then switchbacks several times toward the communication towers on the peak's summit. **TIP:** Check with the Sulphur Ranger District for trail updates and snow conditions.

**Highlights:** ■ Easy access ■ Views of many peaks and mountain ranges  
■ Special view of the Colorado high country

# Colorado Mines Peak Winter Trail Final



TN ↑ MN  
10°  
11/01/07