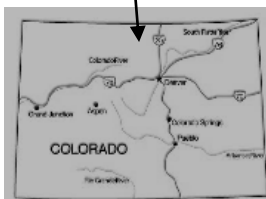


BOWEN & BAKER GULCH LOOP



BACKPACKING TRIP

FYI: The map on the reverse side is for general orientation, not for navigation.

P.S. Get and post trail updates at www.facebook.com/oriccolorado

Location: Never Summer Wilderness
Arapaho National Forest
W. of Rocky Mountain NP

Contact Info: Sulphur Ranger District
970-887-4100
www.fs.fed.us/r2

Length: 15.06 mile loop (estimate using Nat'l Geo Mapping Software)

Time: Two to three night backpack with options for a longer stay. The average person hikes apx. 2 miles an hour. Adjust your time +/- based on terrain, trail and weather conditions and your skill and fitness level.

Elevation Gain/Loss: See trail profile on the reverse side

Difficulty: Moderate to strenuous

Season: Early July through September

Trail Users: Hikers, stock animals and wildlife

Dogs permitted: Not from the Bowen/Baker trailhead

Permits: Not required in the Never Summer Wilderness, but an entrance fee is charged for entry into Rocky Mountain National Park.

Getting There From Denver: Take I-70 west to U.S. Highway 40 (Empire exit). Follow U.S. Highway 40 to Granby. Take U.S. Highway 34 into Rocky Mountain National Park to the Bowen/Baker Gulch trailhead.

Maps: National Geographic Trails Illustrated #200S and or Bowen Mountain, Mount Richthofen and Grand Lake USGS 7.5 topographic maps. **IMPORTANT:** Stay found with the aid of a topographic map, a compass, a GPS receiver and the skill to use them.

Safety Considerations and Supplemental Info: ■ Lightning from afternoon thunderstorms ■ Water drawn from sources along the trail should be treated ■ Stream crossings can be a challenge in the Spring and early Summer ■ Check www.oriconline.org for fire restrictions ■ Be prepared for mosquitoes from July through September ■ You'll need a permit to park your car overnight at the Bowen/Baker Trailhead. You can get this free use permit at the Kawuneeche Visitor Center.

Trail Description: Follow the Baker Gulch Trail to Parika Lake. Continue the trail around Farview Mountain and connect to the Bowen Pass Trail. Then connect to the Bowen Gulch Trail and follow it to the Bowen/Baker Trailhead. **TIP:** Contact the Sulphur Ranger District for trail updates.

Highlights: ■ Alpine serenity ■ Moose habitat ■ Good fishing in the lakes and streams ■ Views of the Continental Divide ■ Wildflowers in season ■ Chance for solitude ■ Rocky Mountain bighorn sheep viewing ■ Views of the Cloud Range: Mount Stratus, Mount Nimbus and Mount Cumulus

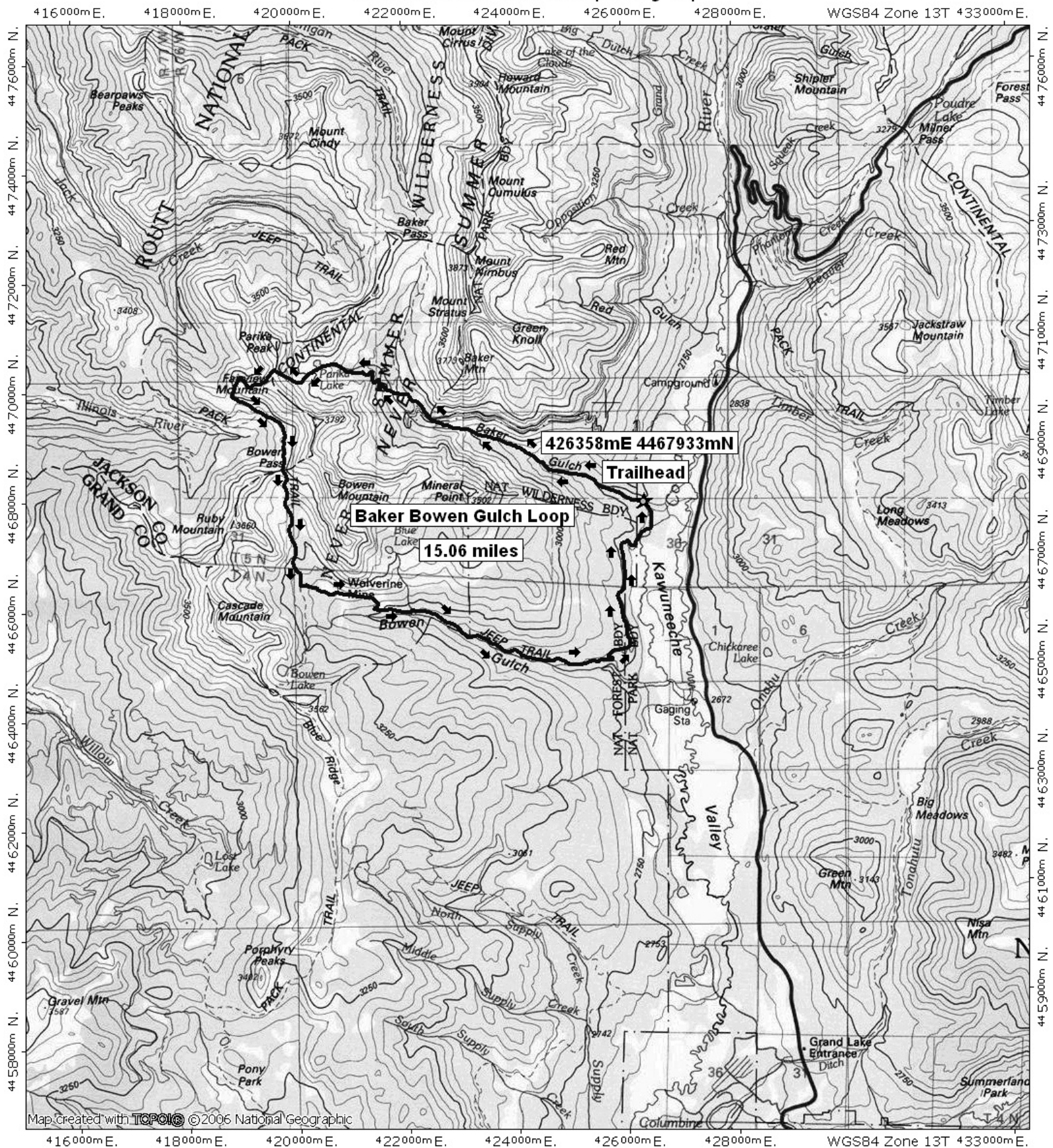
Visit us in the REI DENVER FLAGSHIP STORE

OUTDOOR RECREATION INFORMATION CENTER ■ 1416 Platte Street ■ Denver CO 80202
Ask us. We'll Tell You Where To Go ■ www.oriconline.org ■ Updated: 11-22-2017

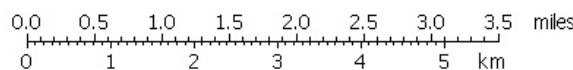
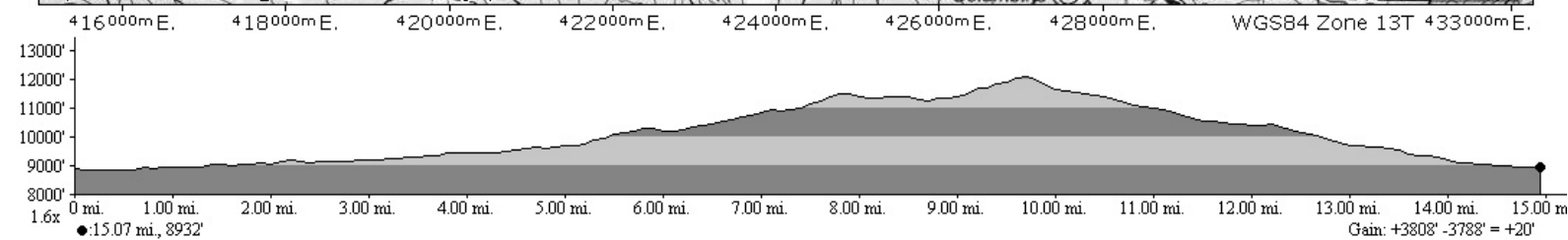
Follow us on: ■ facebook.com/oriccolorado ■ Twitter: @oricbryan



Bowen & Parika Lakes Backpacking Trip



Map created with TOPOMAP © 2006 National Geographic



TN MN
10°
07/24/08