



WHEELER LAKES

WINTER TRAIL

FYI: The map on the reverse side is for general orientation, not for navigation.
P.S. Give and get snow and trail updates at www.facebook.com/oriccolorado

Location: Eagles Nest Wilderness
White River National Forest
Near Copper Mountain

Contact Info: Dillon District Ranger
970-468-5400
www.fs.fed.us/r2

Length: 2.92 miles one-way (est. mileage rounded to the nearest ¼ mile)

Time: The average person snowshoes apx.1 mile an hour. Adjust your time +/- based on terrain, snow conditions, wind speed, your skill and fitness levels and whether you are snowshoeing, skiing or hiking.

Elevation Gain/Loss: See trail profile on reverse side

Difficulty: Moderate to Strenuous (depending upon how far you go)

Activities: Snowshoeing, skiing and hiking (when there's not enough snow)

Season: December through March (Check www.oriconline.org for snow depths and avalanche conditions)

Pets: Dogs must be on a leash not longer than six (6) feet in length

Permits: None required

From Denver: Take I-70 west to Copper Mountain. The trailhead is at the scenic overlook just east of the Copper Mountain exit and north of I-70.

Maps: National Geographic Trails Illustrated Map #108E **IMPORTANT:** Stay found with the aid of a topographic map, a compass, a GPS receiver and the skill to use them.

Safety and Supplemental Info: ■ This is not a good trip for snowshoeing because of the lengthy, flat traverse along I-70 before you begin to climb to the north and get into the good stuff ■ Plan for shorter days in this season

Trail Description: Forest Development Trail # 60 (Gore Range Trail). The trail parallels I-70 for a while and does not gain much elevation. It soon leaves I-70 and begins to climb to the north. A spur trail leads you to Wheeler Lakes.

TIP: Contact the Dillon Ranger District for trail updates and snow conditions.

Highlights: ■ Views to the South are spectacular (they aren't too bad to the North, East and West either) ■ Trail passes through an Aspen and lodgepole pine forest

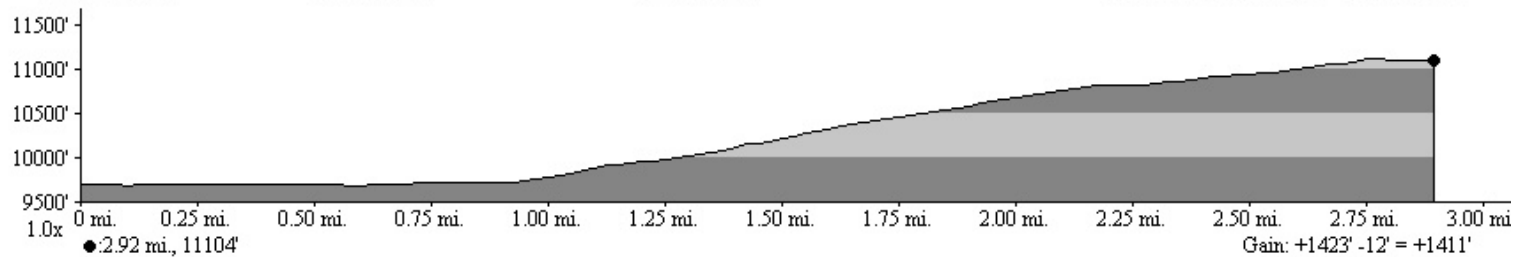
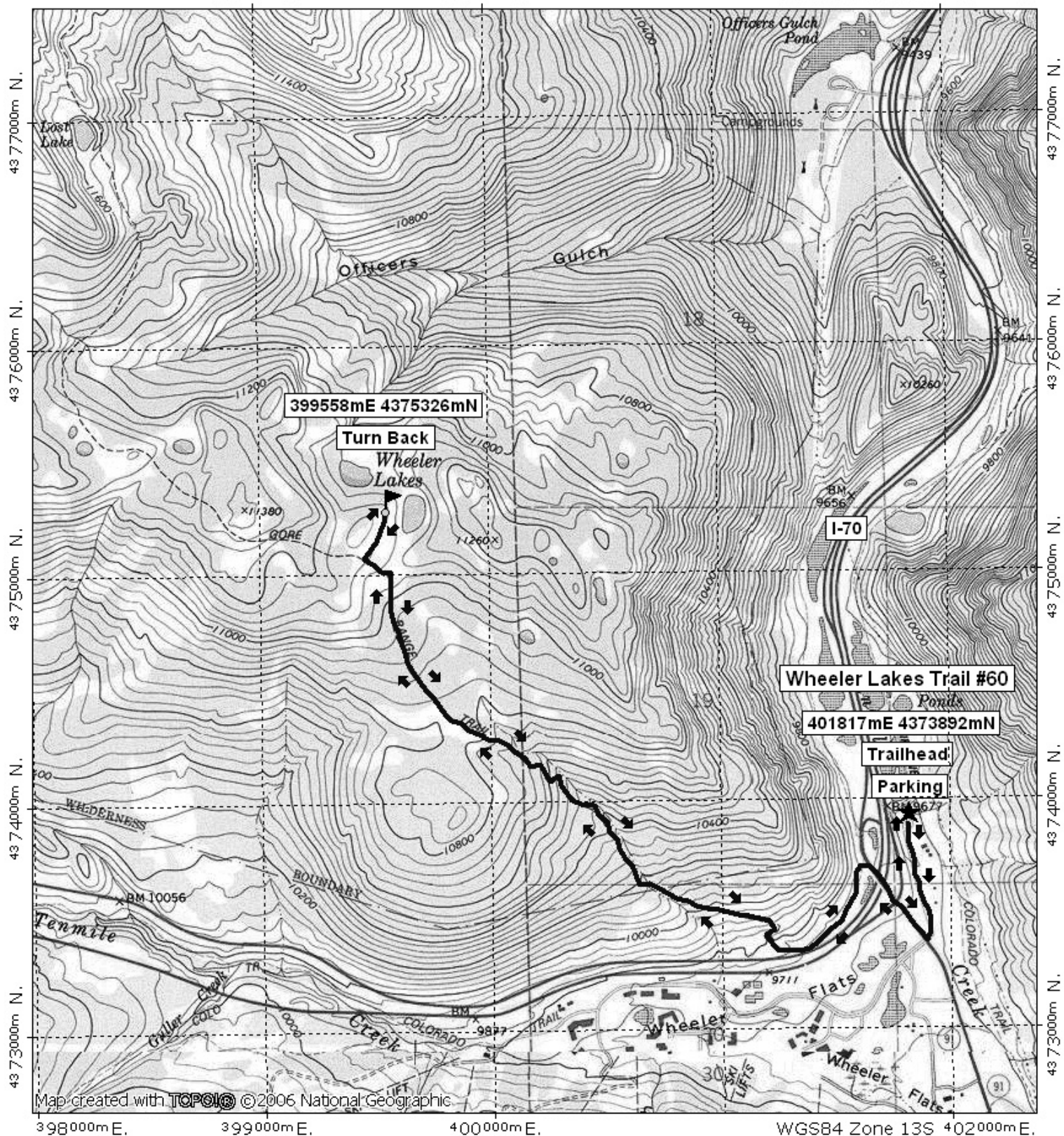


Wheeler Lakes Winter Trail Final

399000m E.

400000m E.

WGS84 Zone 13S 402000m E.



0.0 0.5 1.0 miles
0.0 0.5 1.0 1.5 km

TN MN

10°

10/26/07